

Educate • Enrich • Empower • **Educate** • **Enrich** • **Empower**
 Educate • Enrich • Empower • **Educate** • **Enrich** • **Empower** • **Educate**
Enrich • **Empower** • Educate • Enrich • Empower • **Educate**
Enrich • **Empower** • Educate • Enrich • Empower • *Educate*

Lisle Library District

FY 2015-2016 Annual Report



Educate • Enrich • Empower • *Educate* • *Enrich* • *Empower*
EDUCATE **ENRICH** **EMPOWER** Educate • Enrich • Empower • **Educate**
Enrich • **Empower** • Educate • Enrich • Empower • **Educate**
Enrich • **Empower** • Educate • Enrich • Empower • **Educate** • **Enrich**
Empower • **Educate** • **Enrich** • **Empower** • Educate • Enrich
 Empower • **Educate** • **Enrich** • **Empower** • Educate • Enrich
 Empower • *Educate* • *Enrich* • *Empower* • **EDUCATE** **ENRICH**
EMPOWER Educate • Enrich • Empower • **Educate** • **Enrich** • **Empower**



Leadership 2017

LLD Board of Trustees

Richard Flint, *President*
 Maureen Rieck, *Vice President*
 Colleen Sehy, *Treasurer*
 John Huff, *Secretary*
 Thomas Hummel, *Trustee*
 Jay Fisher, *Trustee*
 Longry Wang, *Trustee*

LLD Team of Directors

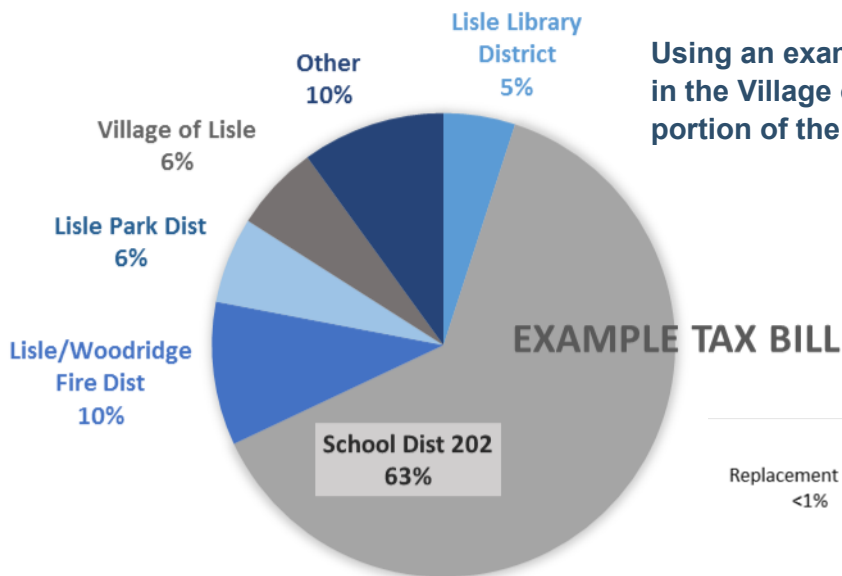
Tatiana Weinstein, *Director*
 Beth McQuillan, *Assistant Director/Technical Services*
 Ginger Boskelly, *Finance Director*
 Paul Hurt, *Circulation Director*
 Will Savage, *Youth Services Director*
 Elizabeth Hopkins, *Adult Services Director*



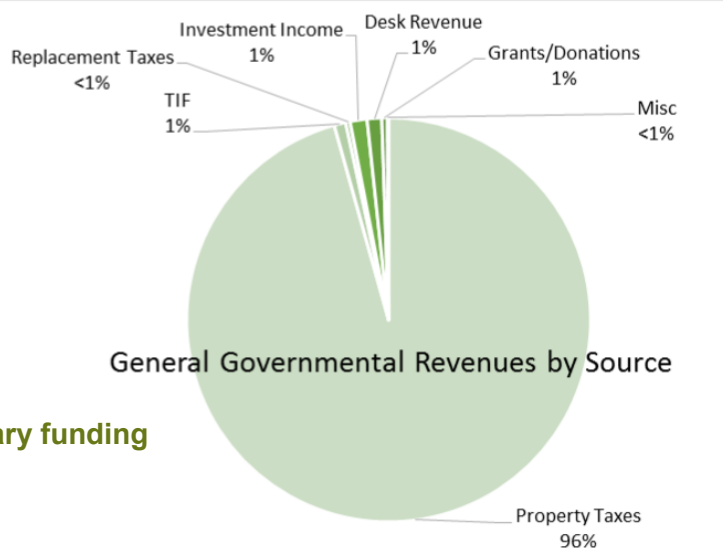
FY15|16 Financials

The Lisle Library District is a public library. As a district library, it is financially responsible for all of its operations, services, staff and for the maintenance of the facility. Our fiscal year runs July 1st - June 30th. The complete audit is accessible via our website lislelibrary.org under the "About Us" tab.

- ◇ The Library received property, TIF and replacement taxes of \$4,888,433 on an assessed valuation of \$1,105,409,799.
- ◇ The Library currently has no debt and a relatively small amount of liabilities, compared to assets. The total current liabilities are \$1,036,749 and assets of \$16,234,057
- ◇ Actual expenditures were \$495,480.00 under working budget due to close attention to costs
- ◇ The low amount of debt in relation to liabilities provides stability to the Library District
- ◇ \$532,350 of the budget was devoted to new materials and digital content for the District community.
- ◇ Over \$32,000 was committed to programs for children, teens, adults and seniors – lifelong learning.
- ◇ \$315,740 was used for technology, providing educational opportunities and access to reading and creativity – a trusted place to use new technology.
- ◇ \$274,766 was devoted to print materials. Still, the number one reason patrons come to the Lisle Library District.



Using an example property tax bill for a home owner in the Village of Lisle, School District 202, the Library portion of the total tax bill is 5%



The primary source of Library funding comes from property taxes



Books and Materials in FY 15|16

Total items checked out: **520,494**

Physical items renewed: **120,280**

Physical items placed on hold: **39,554**

Physical items holds filled: **31,682**

Database usage: **82,180 logins**

Interlibrary items received: **5,031**

Interlibrary items supplied: **1,307**

New physical material cataloged: **25,672**

New digital and electronic materials added: **29,834**

Physical items checked out: **431,067**

Digital downloads: **27,122**

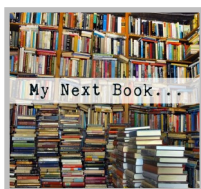
Internet use: **39,929**



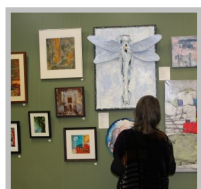
Highlighted Programs and Initiatives in FY 15|16



The database **Lynda.com**, a leading online education resource that helps users learn business, software, technology, and creative skills to achieve personal and professional goals was added to LLD's collection.



My Next Book invites patrons to electronically ask a librarian for reading tips. *Lislelibrary.org* provides an online form for patrons to describe their reading preferences and this information is sent to a librarian who creates a list of hand-picked reading suggestions. This tailored list is then emailed to the patron.



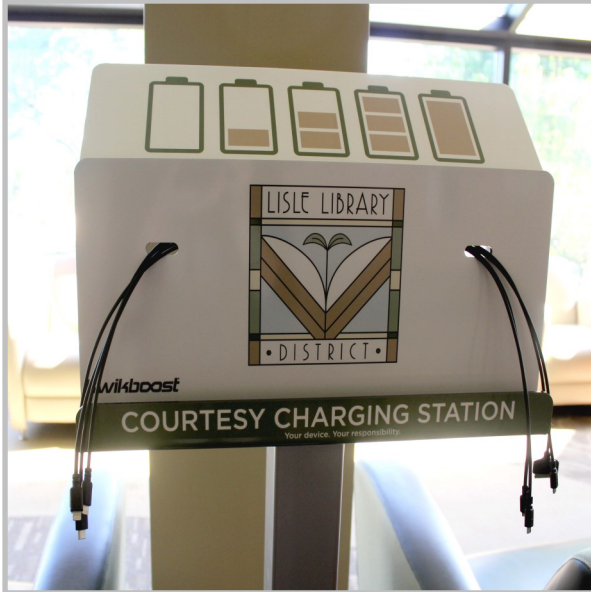
In celebration of *National Poetry Month*, members of the Illinois State Poetry Society wrote poems inspired by collage art provided by artists from the Midwest Collage Society. LLD hosted an art opening/poetry reading for this collaborative **Gallery 777** exhibit where attendees could listen to writers read their work and see the art that inspired the poetry.



LLD hosted its first **Seed Saving Class** with the help of the Morton Arboretum. Patrons were taught how to best harvest seeds. This program was specifically designed to correspond with LLD's Seed Library, encouraging and educating our patrons on how to best return seeds checked out from our unique collection.



New Technology in FY 15|16



Device Charging Stations



Self-Checkout Stations



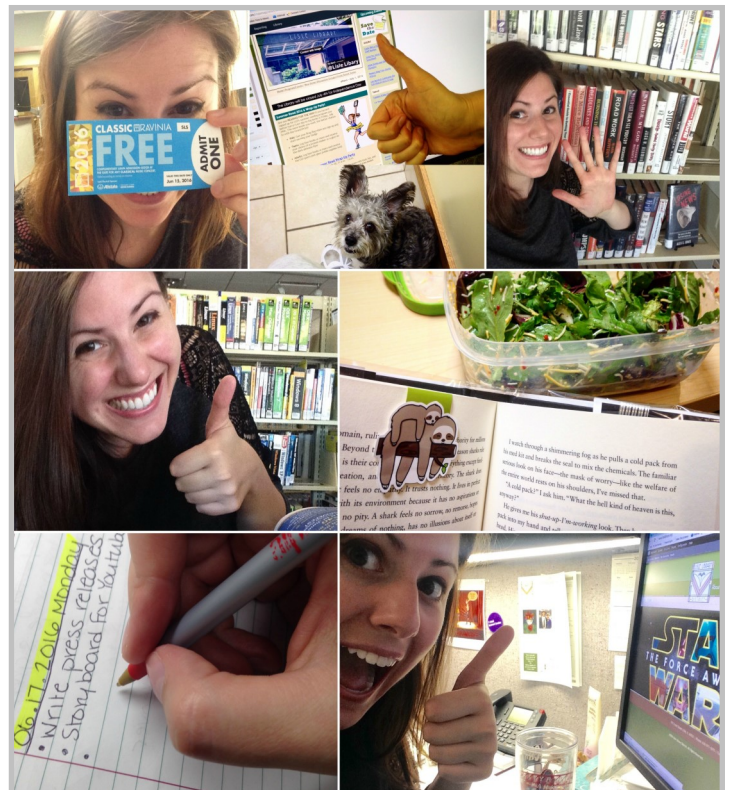
Social Media in FY 15|16

Social Media Platforms and Usage

- Facebook (daily page consumption): **11,663**
- Total Twitter Followers: **574**
- Pinterest Average Daily Viewers: **1,764**
- Total Instagram Likes: **2,711**
- Total Flickr Views: **67,203**
- YouTube Views: **3,021**

First LLD Instagram Takeover Day

- **138** Likes for the day
- A behind-the-scenes look at a day in the life of an LLD staff member
- Able to promote lesser known services such as our monthly eNewsletter
- Became an on-going initiative with staff members in different departments





People and Programs in FY 15|16

Total number of visitors: **193,206**

Number of Reference Questions Answered: **28,609**

Teen Volunteer Hours: **1,672**

Adult Volunteer Hours: **65**

Home Delivery Patrons Served: **544**

LLD Cardholders: **11,055**

Non-Resident Fee Cardholders: **2**

Reciprocal Borrowers Registered Cardholders: **1,199**

Programs Held:

- Adults: **197**
- Teens: **85**
- Kids: **492**

Summer Read 2015

- Adults: **505** participants/**2,212** books read
- Teens: **149** participants/**513** books read
- Kids: **754** participants/**399,800** minutes read

50th Anniversary Open House Attendance: **300**

Gallery 777 exhibits attendance: **178**





A Year in Photos 2015-2016

