



# CONNECTIONS

December 2017 - January 2018

777 Front Street • Lisle, IL 60532 • (630) 971-1675 • lislelibrary.org

## WINTER PARTY AT THE LISLE LIBRARY

Come for the music, stay for the fun! Award-winning musician Fruteland Jackson will perform holiday standards and other favorites. Come in from the cold, enjoy a few treats, sip hot chocolate, enjoy the music, and sign up for Winter Read!

**SATURDAY, DEC. 2**

**1:00 PM - 3:00 PM**



## Family Craft Night! (HOLIDAY EDITION)

Tuesday, December 12th

7:00 - 8:30 PM | Meeting Room A/B

Join us for a winter wonderland Family Craft Night! Create sensational snowy scenes using a simple mason jar! Kids will pick out whimsical figurines while grown-ups create strings of "falling snow." Supplies are provided, you bring the enthusiasm! **Registration begins on Tuesday, December 5, at 9:30 AM.**



## WINTER READING

**Dec. 1st - Jan. 7th**

**Adults & Teens:** Read two books (or more) this winter to complete their challenge. Complete the program and receive the perfect mug for cold-weather treats.



**Kids:** Complete Winter Reading challenges and receive special Winter Read badges! Complete the program and receive a Snowman mini-plushie as a prize!



## GALLERY 777

**DECEMBER - JANUARY EXHIBIT**  
*Beyond the White Gardens*

Artist: Kasia Szczesniewski | Mixed-media  
Reception: Friday, Dec. 8th, 6:00-8:00 PM

Gallery 777 is proud to present artist Kasia Szczesniewski and her mixed-media show *Beyond the White Gardens*. Come and meet the artist! Light refreshments will be served. The pieces will be displayed through January, but don't miss the **opening night reception Friday, December 8th from 6:00-8:00 PM.**

## Lisle Library District

### Library Hours

**Monday - Friday**

9:30 AM - 9:00 PM

**Saturday**

9:30 AM - 5:00 PM

**Sunday**

1:00 PM - 5:00 PM

## Board of Trustees

Jay Fisher *President*

Thomas Hummel *Vice President*

Longry Wang *Treasurer*

Liz Sullivan *Secretary*

Marjorie Bartelli *Trustee*

Richard Flint *Trustee*

Emily Swistak *Trustee*

Board of Trustees meetings are held at 7:00 PM, on the second Wednesday of every month, and are open to the public.

UPCOMING LLD BOARD OF TRUSTEES MEETINGS:

Dec. 13th & Jan. 10th  
7:00 PM  
in the Meeting Rooms

## Library Staff

Tatiana Weinstein  
*Director*

Beth McQuillan  
*Assistant Director*

Paul Hurt  
*Circulation Services Director*

Will Savage  
*Youth Services Director*

Elizabeth Hopkins  
*Adult Services Director*

Laura Murff  
*Technical Services Director*

Josh Hepler  
*Communications Coordinator*

If you are in need of an accommodation for a disability for a program or event, please contact us.

## A MESSAGE FROM THE LIBRARY DIRECTOR

I wish the residents of the Lisle Library District a lively, loving and literary holiday season! In this season of gift-giving, remember that your Library is the gift that keeps on giving all year long. If you haven't renewed or applied for a Library card, come in from the cold and cozy up to your very own LLD card. We are not only the literary hub of the community, we have movies/documentaries, music, access to a variety of databases, computer classes, crafting events, local art, meeting rooms and a great staff!

So if you're not interested in holiday spending, come to the LLD and take home some Library "presents" for yourself and for your family!

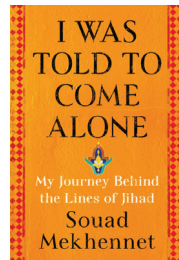
*Happy Holidays,*

Tatiana Weinstein  
Director | LLD



## (SOME OF) THE BEST ... OF 2017

### NON-FICTION BOOKS



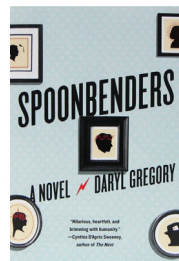
**I WAS TOLD TO COME ALONE**  
BY SOUAD MEKHENNET  
**THE FUTURE IS HISTORY** BY MASHA GESSEN  
**BUNK** BY KEVIN YOUNG  
**THE EVANGELICALS** BY FRANCES FITZGERALD  
**NEVER CAUGHT** BY ERICA ARMSTRONG DUNBAR

### CDS / MUSIC

**FROM A ROOM: VOL 1**  
CHRIS STAPLETON  
**GOD'S PROBLEM CHILD**  
WILLIE NELSON  
**CTRL** SZA  
**IS THIS THE LIFE WE REALLY WANT?**  
ROGER WATERS  
**NEAR TO THE WILD HEART OF LIFE** JAPANDROIDS



### FICTION BOOKS



**SPOONBENDERS** BY DARYL GREGORY\*\*  
**SAINTS FOR ALL OCCASIONS** BY J. COURTNEY SULLIVAN\*\*  
**EASTMAN WAS HERE** BY ALEX GILVARRY  
**THE BOOK OF JOAN** BY LIDIA YUKNAVITCH  
**EXIT WEST** BY MOHSIN HAMID

### AUDIOBOOKS



**GRANT** BY RON CHERNOW  
**TURTLES ALL THE WAY DOWN** BY JOHN GREEN  
**SLEEPING BEAUTIES** BY STEPHEN & OWEN KING  
**REALITY IS NOT WHAT IT SEEMS** BY CARLO ROVELLI  
**THE LONELY HEARTS HOTEL** BY HEATHER O'NEILL

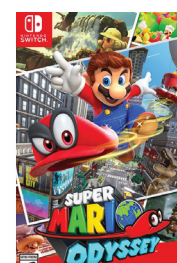
### YOUTH SERVICES BOOKS



**THE GIANT JUMPEREE** BY JULIA DONALDSON  
**MÆ & JUNE AND THE WONDER WHEEL** BY CHARISE MERICLE HARPER  
**THE QUEST FOR Z** BY GREG PIZZOLI  
**FELIX YZ** BY LISA BUNKER  
**THE EPIC FAIL OF ARTURO ZAMORA** BY PABLO CARTAYA

**A GHOST STORY** \*\*\*  
**PERSONAL SHOPPER** \*\*\*  
**AFTER THE STORM**  
**THE BIG SICK** \*\*\*  
**GIRLS TRIP** \*\*\*

### VIDEO GAMES



### DVDS / MOVIES



**HORIZON ZERO DAWN**  
**YOOKA LAYLEE**  
**SPLATOON 2**  
**UNCHARTED: THE LOST LEGACY**  
**SUPER MARIO ODYSSEY**

\*\*Indicates also available in Large Print

\*\*\*Indicates also available in Blu-ray

Check out more titles at the Library by visiting the "New Titles" link on the search page of our online catalog.



## LOWER TAXES FOR THE DISTRICT

It was gratifying to create a lower levy for the 2018/19 tax year. My aim as Director, is to continue to have a healthy general fund while planning for the Library's future. The Library has no debt and maintains a realistic financial forecast. We will soon embark on a new strategic plan. Our Library is an essential community institution and I look forward to planning for our future and preserving our mission to enrich, educate and empower our residents. That's my duty. District residents deserve strong, valuable public institutions like the LLD.

Tatiana Weinstein | Director

### ESL for You! Literacy/English Language Development (ELD) Class

Saturdays, 10:00 AM - Noon

**Dec. 2, 16 | Jan. 6, 20**

Get help with speaking, reading, writing, or communicating in English! Classes are in session all year.



### Conversation Group

Saturdays, 10:00 AM - Noon **Dec. 9 | Jan. 13, 27**

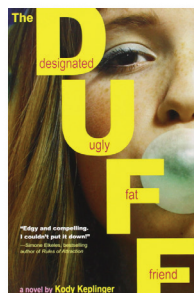
Improve your conversation skills at our English Conversation Group. Learn new vocabulary words and phrases and to engage in lively conversation.

## TEEN BOOK CLUB

Pick up your book at the Circulation Desk beginning Nov. 17 (*The Duff*) & Dec. 22 (*The Blind Side*).

### Readers Rejoice! *The Duff*

Friday, December 22, 6:30 PM - 8:00 PM | Meeting Room B

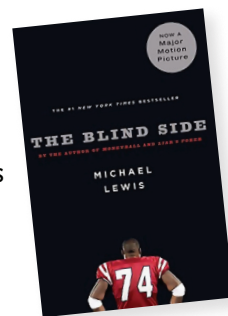


Join us as we discuss *The Duff*. Despite her best intentions, seventeen-year-old Bianca becomes involved with a notorious womanizer, Wesley, and must come to terms with her feelings amidst her own personal and family struggles. This witty and irreverent story touches on topics of self-esteem, body image, and friendship. Recommended for 15+.

### Readers Rejoice! *The Blind Side*

Friday, January 19, 6:30 PM - 8:00 PM | Meeting Room B

Join us as we discuss *The Blind Side*. In this biography, Michael Lewis weaves a study of the evolution of football with the sad-yet-inspiring story of Michael Oher. As a child, Oher found himself homeless, but was later adopted by a family and found a sense of belonging. Oher went on to play football for the University of Mississippi. Recommended for 13+.



## Technology Classes

Learn something new about the digital world. Registration required (with the exception of Drop-In classes).

### Researching Your Family History

Monday, December 11, 2:00 PM - 3:00 PM | Meeting Room A



The Library offers two databases that include information such as census data, passenger lists, church records, and much more. In this class, learn how to use *Ancestry.com Library Edition* and *HeritageQuest*.

### Access Library Services from Home

Tuesday, Dec. 12, 6:00 PM - 7:00 PM | Connection Desk Drop-In



Learn how you can use the Library's website to access information about events, classes, Book & Film discussion groups, ESL/Language Development links, eBooks, eAudiobooks, streaming music and video, and much more.

### Introduction to lynda.com

Thursday, January 4, 7:00 PM - 8:00 PM | Meeting Room B



Lynda.com is an online resource that you can access with your LLD card to learn technology, business, and creative skills to achieve personal and professional goals. We'll cover getting an account and highlight site features.

### Learn a New Language!

Tuesday, Jan. 9, 7:00 PM - 8:00 PM | Connection Desk Drop-In



Make a New Year's resolution to learn a new language, or improve English skills! Try *Transparent Languages Online*, a powerful tool to access more than 90 languages from a Library computer, a home PC, or your mobile device.

### eBooks & eAudiobooks with Libby!

Wednesday, Jan. 10, 3:00 PM - 4:00 PM | Meeting Room B



Start the New Year with a new way to access eBooks and eAudiobooks on your mobile device! *Libby* is a new app that replaces Overdrive. We will be covering how to access and navigate Libby. Bring your mobile device!

### Learn Hoopla Digital!

Friday, January 26, 2:00 PM - 3:00 PM | Meeting Room B



Use your Lisle Library card to access eBooks, eAudiobooks, music, TV series and movies using *hoopla digital*! Join us for a tour of the many resources that you can enjoy on your mobile device or computer with hoopla digital.

## • YOUTH PROGRAMS •

Registration for Youth Services programs begins two weeks before that program. Visit [lislelibrary.org](http://lislelibrary.org) or call (630) 971-1675 to register.

### STORYTIME AT LISLE LIBRARY DISTRICT

#### Little Movers & Shakers (6-24 months)

9:30 - 10:15 AM | Meeting Room A

Tuesdays **Dec. 5, 12 | Jan. 2, 9, 16, 23, 30**

Weds. **Dec. 6, 13 | Jan. 3, 10, 17, 24, 31**

Thursdays **Dec. 7, 14 | Jan. 4, 11, 18, 25**

Babies who are crawling and walking are starting to notice the wide world around them. Let's sing, dance, and talk about it! Enjoy an interactive storytime with your little mover and shaker!



#### Toddler Storytime (ages 2-4)

10:30 - 11:15 AM | Meeting Room A

Tuesdays **Dec. 5, 12 | Jan. 2, 9, 16, 23, 30**

Weds. **Dec. 6, 13 | Jan. 3, 10, 17, 24, 31**

Thursdays **Dec. 7, 14 | Jan. 4, 11, 18, 25**

Toddlers will interact with engaging books, music, and games that build on their growing love for language. Each storytime ends with an art project, so toddlers can let imaginations run wild.



#### Preschool Storytime (ages 3-6)

10:30-11:15 AM | YS Activity Room

Tuesdays **Dec. 5, 12 | Jan. 2, 9, 16, 23, 30**

Weds. **Dec. 6, 13 | Jan. 3, 10, 17, 24, 31**

Thursdays **Dec. 7, 14 | Jan. 4, 11, 18, 25**

Have fun and build literacy skills in our Preschool storytime! Children will engage with books, stories, and songs, plus get creative with enriching art projects.



Registration is required, since space is limited. Feel free to call register online at [lislelibrary.org](http://lislelibrary.org)

## MONDAY FUNDAY & TERRIFIC TUESDAY

Grades K-5. Registration required. **4:00 - 5:00 PM**,  
Mondays and Tuesdays, Meeting Room A/B.



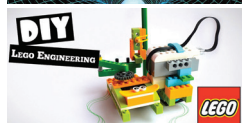
#### **Bloxels!** | Dec. 4 & 5

Bloxels are back! Come in and design your own video game levels! Can you make a level the librarians can't beat?



#### **Gravity** | Dec. 11 & 12

Gravity affects us every moment of our lives. Join us as we experiment with gravity, from earth to outer space!



#### **LEGO WeDo Buzz Buzz!** | Dec. 18 & 19

Bees are a critical part of the life cycle of many plants. We'll use Legos to learn more about our buzzing friends!



#### **Layers of Liquid** | Jan. 2 (Tues. only)

You've seen layers of cake, but what about layers of liquid? We'll experiment with the science behind density!



#### **Slimed!** | Jan. 8 & 9

Watch out, slime is invading the library! Come in to make some slime and learn about non-Newtonian fluids!



#### **LEGO WeDo Frog Time** | Jan. 15 & 16

Using Lego robots to learn about the life cycle of a frog may sound a bit crazy, but we can do it!



#### **Solve the Case** | Jan. 22 & 23

Calling all detectives! A crime has been committed! Use your sleuthing skills to crack the case.

## THURSDAY KID'S CLUB

Grades K-2. Registration required. **4:00 - 4:45 PM**,  
Thursdays, Meeting Room A/B.

Anything can be discovered in a book! Each week will focus on a different theme with books, crafts, science experiments, and more!



#### **3D SNOWFLAKES**



#### **WATERCOLOR WINTER**



#### **SNOW GLOBES**



#### **IGLOO FORTRESS**

**DEC. 7**

**JAN. 4**



#### **PENGUIN PARTY**

**DEC. 14**

**JAN. 11**



#### **DO YOU WANT TO BUILD A SNOWMAN?**

**DEC. 21**

**JAN. 18**



#### **HOT CHOCOLATE EXTRAVAGANZA**

**DEC. 28**

**JAN. 25**



#### **SNOW DOUGH**



## • YOUTH PROGRAMS •

Registration for Youth Services programs begins two weeks before that program. Visit [lislelibrary.org](http://lislelibrary.org) or call (630) 971-1675 to register.

### Pokémon Club

Every other Wednesday, 4:30 PM – 5:30 PM | Meeting Room B



Do you think you have what it takes to be the best? Join other aspiring trainers at our Pokémon Club! We will play a few Pokémon themed games and play both the card and video games. Play, trade, and meet some other trainers! For ages 6-13.

**December 6, 20 | January 3, 17, 31**

### Pajama Storytime

Every other Wednesday, 6:00 PM – 6:30 PM | YS Activity Room



Bring your favorite stuffed animal and cuddle up for a night storytime at the library. Stories will be heard, songs will be danced to, and everyone will have a blast! For ages 2-6.

**December 13, 27 | January 10, 24**

### Holiday Hop! (Song & Dance Storytime)

Tuesday, December 19, 10:30 AM – 11:00 AM | Meeting Room A



Want to jump to Jingle Bells and romp with Rudolph? Come in for our annual wintertime Holiday Hop! This special storytime will be comprised of all types of festive songs and kinds of dancing! We will dance till we drop! For ages 2-6.

### Mario Kart Tournament

Once a month, 4:30 PM – 6:00 PM | Meeting Room A



Think you've got what it takes to be Lisle's best Mario Kart Racer? Enter and compete for the title. This game is rated E. Ending times for this event may vary by up to 15 minutes. For grades K-5.

**December 15 | January 19**

## SCIENCE SATURDAY

### The Science of Reactions

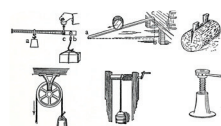
Saturday, December 9, 10:30 AM – 11:30 AM | Meeting Room B



How can water become something else? Science! Turn ordinary water into carbonic acid as we explore this and other chemical reactions.

### Simple Machines

Saturday, January 6, 10:30 AM – 11:30 AM | Meeting Room B



Levers, pulleys, inclined planes - they are all simple machines we use every day, sometimes without even knowing it. Put these machines to the test!

## YA THURSDAY

### Giant Snowflakes

Thursday, December 7, 4:15 PM – 5:15 PM | Meeting Room A/B



Let it snow? Maybe not, but we're still going to make some flakes in a *big* way. Explore geometry and make your space into a winter wonderland with giant DIY paper snowflakes!

### Between the Panels

Want to read comics, but aren't sure where to start? Love them already and want to share your faves and get new recommendations? Join our new YA Comic Book Club!

**Thursday, Dec. 21** 4:15 PM – 5:00 PM | Meeting Room A/B

*My Hero Academia* by Kohei Horikoshi

**Thursday, Jan. 11** 4:15 PM – 5:00 PM | Meeting Room B

*Rickety Stitch & the Gelatinous Goo* by Ben Costa, James Parks

### Life-Sized Games

Thursday, January 4, 4:00 PM – 6:00 PM | Meeting Room A/B



Bored of normal board games? Try giant versions of your favorites. Join us for an afternoon of life-sized board games! Battle your friends with life-sized versions of Battleship, Connect Four, and more!

### Popsicle Hexagon Shelf

Thursday, January 25, 4:15 PM – 5:15 PM | Meeting Room B



It's a New Year, and a New More-Organized You! Create a stylized place to keep your stylish stuff. Start the year off with a new shelf and a new craft skill under your belt. Join us for DIY Popsicle Hexagon Shelves!

## FANDOM FRIDAY

Are you into fandom? Want to shout it from the rooftops (or maybe just find someone to geek out with)? Join us!

**Star Wars** Friday, December 15 | Meeting Room B

*The Last Jedi* is here, and the Force is Strong with us!

**Shonen Jump** Friday, January 19 | Meeting Room B

From *Naruto* to *Death Note*, and all the manga in between!

### Magic THE Gathering & Board Game Night

Wednesdays, 6:30 PM – 8:30 PM | Meeting Rooms



Are you looking for somewhere to play Magic and board games? Want to meet new people? Come to Game Night! We'll have a wide selection of board games, from *Clue* and *Splendor* to *Settlers of Catan*. Come join the fun! LLD does not supply Magic cards, but you can bring your own.

## • ADULT AND TEEN PROGRAMS •

Registration is required for programs. Register online using the Events Calendar at [lislelibrary.org](http://lislelibrary.org) or by calling (630) 971-1675.

### TEEN PROGRAMS

#### Cupcake Decorating Wars

Wednesday, December 6, 6:30 PM – 8:00 PM | Meeting Room B



Bring your ideas, we'll provide the cupcakes (and other toppings) to help you create your winter-inspired cupcake! Prizes will be awarded. May the odds be ever in your favor! (Yes, you can eat the finished product!)

#### Teen Yoga for Stress Relief

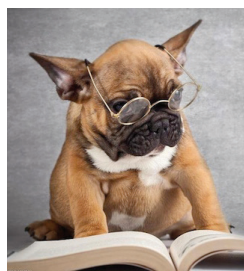
Saturday, December 16, 2:00 PM – 3:00 PM | Meeting Room B



Studying hard brings many benefits; however, the pressure to do well in limited time with great expectations may have you feeling a little stressed. Join yoga instructor Marti Anne in this relaxing hour long class for teens to help ward off exam stress, keep a clear mind, and to be your best!

#### Exam Cram (and Therapy Dogs)

December 19 - 21, 6:00 PM – 8:30 PM | Meeting Room B



It's final exam time! Don't panic! We're here to help. If you need a place to study, we will have our meeting rooms open just for you. We will also have snacks and moral support. **On Wed. Dec. 20 (6:00 - 7:00 PM), come de-stress with cuddles from a therapy dog brought to you by the West Suburban Humane Society.**

#### CRAFT CONNECTION: Knit Scarves

Tuesday, January 9, 6:30 PM – 8:00 PM | Meeting Room A



Do you knit, crochet, cross-stitch (or some other nifty craft), or want to learn how? Meet up with other teens for informal crafting and snacks. At this session we'll knit a scarf! Yarn and knitting needles will be provided, but feel free to bring your own supplies or knitting project.

#### Smash Brothers Night!

One Tuesday a month, 6:30 PM – 8:30 PM | Meeting Room A/B



Gather your friends for a fun night of delightful demolition as we play Smash Bros. on the Wii U! Bring your A-game and beat your best friends! Snacks will be served!

**December 19 | January 16**

#### Stop Motion Animation Lab

Thursday, January 25, 6:30 PM – 8:00 PM | Meeting Room B

Create a short video using a series of pictures! Use Legos, Playdoh, pen and paper, sticky notes, or a variety of other everyday items to create a short film with an iPad and an app.

### ADULT PROGRAMS

#### Religious Chicago: A Look Back

Thursday, December 7, 7:00 PM – 8:30 PM | Meeting Room B

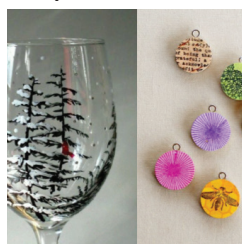


Join us for a historic look back at Chicago's religious communities. Presenter Richard Flint will discuss practices from the early 1900's to World War II, and how communities of faith develop. We'll also look at the diverse faiths have shaped Chicago into the city that we know today.

#### ADULT CRAFT:

##### Cork Beverage Charms & Painted Glasses

Friday, December 15, 7:00 PM – 8:30 PM | Meeting Room A/B



Which glass is which?! Be confused no more! Each aspiring host will have an opportunity to make charms out of cork and decorate their own wine glass! Each participant will receive 4 charms and one glass. **Limited to 30 individuals, registration begins Fri. Dec. 8, 9:30 AM.**

#### Lisle Library Writer's Group

Third Friday of each month, 6:30 PM – 8:30 PM | Meeting Room A

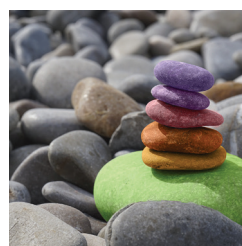


The Lisle Library District's Writers Group shares three pages of written work (from fiction to nonfiction and everything in between) and gives helpful feedback. Writers can join commitment-free, anytime, and the door is open to all writers of any style.

**December 15 | January 19**

#### Meditation for New Beginnings

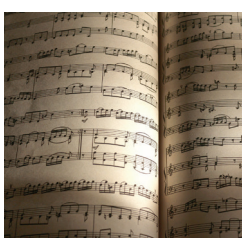
Friday, January 12, 7:00 PM – 8:00 PM | Meeting Room A/B



In this fast-paced world, peace seems like an elusive commodity. Join us for a workshop led by longtime meditator Renate Lanotte. We'll discuss and demonstrate techniques that can reduce stress, enhance relaxation, promote inner growth, and improve physical, mental, and spiritual health.

#### Bel Sonore Chamber Ensemble Presents: Music of the Italian Baroque

Saturday, January 13, 2:00 PM – 3:00 PM | Meeting Room A/B



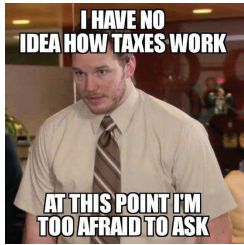
Enjoy an afternoon of Italian Baroque music by the *Bel Sonore Chamber Ensemble*. Savor Vivaldi, Tartini, Caldara, and others by the musicians prominently featured in *Prairie Crossing Concert Series* and the *Lyric Opera Guild*.



Registration is required for programs. Register online using the Events Calendar at [lislelibrary.org](http://lislelibrary.org) or by calling (630) 971-1675.

## Millennials and Taxes: What You Need to Know

Thursday, January 18, 6:30 PM – 8:30 PM | Meeting Room A/B



A recent survey reported that more than 80% of Millennials had concerns about filing tax returns. Join Judi Strauss as she guides you through the tax necessities. Learn what credits you are eligible for, how to report side jobs and self-employment, and strategies to get the most out of the tax process.

## TREASURES FROM THE VAULT: A Quilting History

Sunday, January 21, 2:00 PM - 4:30 PM | Meeting Room A/B



Melissa Wraalstad, Executive Director of Wisconsin Museum of Quilts & Fiber Arts, will take us on a journey through quilting history. Join us as she shares stories behind the quilts that are not always exhibited. Attendees are encouraged to bring quilts and share their stories. This program is in partnership with the

Lisle Heritage Society, Lisle Woman's Club, and the Lisle Library District.

## ADULT CRAFT:

### DIY Dry Erase Organizational Boards

Tuesday, January 23, 7:00 PM – 8:30 PM | Meeting Room A/B



Be intentional with your New Year's resolutions by making a DIY dry erase organization board! We'll use upcycled materials from our craft closet to create unique, one-of-kind, boards that fit your style. Each individual makes one board, all supplies are provided. **Registration begins Tuesday, January 9 at 9:30 AM and is limited to 30 individuals.**

## Taxes Are Everyone's Business

Tuesday, January 30, 6:30 PM – 8:30 PM | Meeting Room A/B



In this workshop, Judi Strauss will review the key elements of the 2017 tax code, both for the IRS and Illinois. She will also discuss important deductions, as well as common tax problems such as IRA withdrawals, K-1s from Trusts and Estates, Roth conversions, and taxable Social Security.

## Looking for More Information & Updates?



Did you know that you can sign up to get eNews from the Lisle Library District? Just visit [lislelibrary.org](http://lislelibrary.org) and click 'eNews' under the 'Services' tab, visit, or call at (630) 971-1675.

## Book & Film Groups

Titles are available at the Reference Desk

### Booked for the Day

Covering Fiction, Nonfiction, and classics.

[lislelibrary.org/bookedfortheday](http://lislelibrary.org/bookedfortheday)

Mondays 11:00 AM | Meeting Room B

*The Tenant of Wildfell Hall*

by Anne Bronte **Dec. 4**

*Hero of the Empire* by Candice Millard **Jan. 8**

### Fixed on Fiction

Primarily Fiction.

[lislelibrary.org/fixedonfiction](http://lislelibrary.org/fixedonfiction)

Thursdays 7:00 PM | Meeting Room A

*Fishbowl* by Bradley Somer **Dec. 14**

*Another Brooklyn*

by Jacqueline Woodson **Jan. 11**

### Just the Facts Nonfiction

Nonfiction, including history and memoirs.

[lislelibrary.org/justthefacts](http://lislelibrary.org/justthefacts)

Wednesdays 7:00 PM | Group Study Room

*The Oregon Trail: a New American Journey*

by Rinker Buck **Dec. 13**

*Nagasaki: Life After Nuclear War*

by Susan Southard **Jan. 17**

### Murder Among Friends Mystery

Mysteries, with author call-ins and appearances.

[lislelibrary.org/murderamongfriends](http://lislelibrary.org/murderamongfriends)

Thursdays 7:00 PM | Meeting Room B

*Pretty Girls* by Karin Slaughter **Dec. 14**

*Leaving Time* by Jodi Picoult **Jan. 18**

### Science Fiction / Fantasy

A variety of science fiction and fantasy books.

[lislelibrary.org/sciencefictionfantasy](http://lislelibrary.org/sciencefictionfantasy)

Wednesdays 7:00 PM | Meeting Room B

*All the Birds in the Sky*

by Charlie Jane Anders **Dec. 27**

*The Aeronaut's Windlass*

by Jim Butcher **Jan. 31**

### Just Between Frames Film Group

Current and classic movies for film lovers. 17

and up. [lislelibrary.org/justbetweenframes](http://lislelibrary.org/justbetweenframes)

Mondays 6:00 PM | Meeting Room B

*Sleuth* **Dec. 18**

*Hidden Figures* **Jan. 29**



## Lisle Library District

777 Front Street  
Lisle IL 60532-2287

NONPROFIT ORG  
US Postage Paid  
Lisle IL  
Permit No. 208

December 2017 - January 2018

ECRWSS

Lisle Library Patron Local

Lisle IL 60532

### • FRIENDS •

*The Friends of the Lisle Public Library District is a 501c3 organization. Monetary contributions to the Friends are welcome and tax deductible.*



### Heather Styka Holiday Concert

Sunday, December 10, 2:00 PM | Meeting Room A/B

Though rooted in folk and Americana, Chicago singer-songwriter Heather Styka's songs are as fresh as they are memorable, chronicling the human cycles of despair and redemption, and analyzing the importance of places and relationships. Touring nationwide and having received airplay globally, Styka is a familiar face in the Chicago music scene, at venues including Schubas and the Old Town School.



### Mark Dvorak's Tribute to Pete Seeger

Sunday, January 7, 2:00 PM | Meeting Room A/B

Mark Dvorak is a folk singer's folk singer who follows unerringly in the footsteps of artists like Woody Guthrie, Lead Belly, Big Bill Broonzy and Art Thieme. His natural style of performing can make an old song sound new and a new song sound familiar. Entertaining warmth, sincerity, and distinctive talent have distinguished Mark Dvorak as one of today's important folk artists.

**THE LIBRARY  
WILL BE CLOSED**



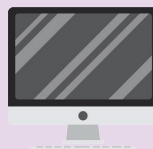
**DEC. 23-25  
FOR CHRISTMAS**

**& DEC. 30 -**



**JAN. 1  
FOR NEW YEARS**

A COMPLETE  
ONLINE CALENDAR  
CAN BE FOUND AT



[lislelibrary.org](http://lislelibrary.org)

**THE FRIENDS OF THE LISLE  
PUBLIC LIBRARY DISTRICT  
HAVE A NEW CONTACT EMAIL!**  
**[friendslislelibrary@gmail.com](mailto:friendslislelibrary@gmail.com)**

