



CONNECTIONS

November/December 2016

• DISTRICT •

777 Front Street • Lisle, IL 60532 • 630-971-1675 • lislelibrary.org

Gallery 777 Presents Dinosaurs and Strange Birds



Gallery 777 is proud to present artist Nancy Staszak's **Dinosaurs and Strange Birds**. The pieces will be displayed through December, but don't miss the **opening night reception, Friday, November 4th from 6 – 8 p.m.** *Light refreshments will be served.*

**Know a local artist?
Do you create 2D art?**

Consider showing at Gallery 777.
Visit lislelibrary.org/gallery-777 and submit
an application to show in 2017.

**The library will
be CLOSED
November 24,
December 24-26,
and December 31.**

8th Annual “I Love My Lisle Library Card” Program a Success!



Forty-three businesses and nonprofits offered discounts to Lisle Library cardholders in September as part of the “I Love My Lisle Library Card” program. Six new businesses participated in the program this year: four food venues, a professional health care organization, and a senior living community. Many of these 43 partners also donated prizes for our Ready, Set, Go! Open House in August. During National Library Card Sign-Up Month in September, Lisle Library registered 178 patrons for new Library cards and 236 patrons renewed their cards.



International Games Day!

Saturday, November 19, 11 a.m. – 3 p.m. in Meeting Room A/B

Do you enjoy tabletop gaming? LLD is hosting International Games Day, a world-wide celebration of all things tabletop, featuring games like *Settlers of Catan* and *Smashup!* We'll have other timeless favorites like *Clue* and *Monopoly*. Attend to win one of five sets of tickets to Lisle's newest gaming destination **Pixel Blast Arcade**. *Refreshments will be served.*





Lisle Library District

Library Hours

Monday-Friday: 9:30 a.m.-9 p.m.

Saturday: 9:30 a.m.-5 p.m.

Sunday: 1-5 p.m.

Holiday closings are posted on lislelibrary.org.

Board of Trustees

Richard Flint, *President*

Maureen Rieck, *Vice President*

John Huff, *Secretary*

Colleen Sehy, *Treasurer*

Jay Fisher, *Trustee*

Thomas Hummel, *Trustee*

Longry Wang, *Trustee*

Board of Trustees meetings are held at 7:00 p.m., the second Wednesday of every month and are open to the public.

Library Staff

Katharine Seelig

Director

IT Administrator

Tatiana Weinstein

Assistant Director

Adult Services Director

Paul Hurt

Circulation Services Director

Beth McQuillan

Technical Services Director

Will Savage

Youth Services Director

Alexa Hansen

Newsletter Editor

Newsletter published bi-monthly.

If you are in need of an accommodation for a disability for a program or event, please contact us.

• EDUCATE! ENRICH! EMPOWER! •

A Holiday Message from LLD's Board President

As the days get shorter and 2016 draws to a close, we at the LLD wish all the best for you and yours. However you use the library - whether you're a fan of our annual Summer Read, Kids' Story Time, Ready Set Go, Horrorween, chess club, or one of our book clubs; whether you use our databases, pcs, Wi-Fi or scanner; or whether you just want to browse our print and digital collections - we value your continued support and that of the full community. In this holiday season, as we take pride in our accomplishments, let us also honor those who've laid our foundations.

Rokus and Launchpads at the Library



LLD now has Rokus for you to check out! Stream hundreds of movies and TV shows from the device in the comfort of your own home. Check one out today at the Connection Desk! Or head over to

Youth Services and check out a Playaway Launchpad for your kids! These preloaded tablets are designed to keep children exploring, learning, playing, and staying sharp with tons of apps and games!

Upcoming Literacy Class Schedules

Citizenship Corner

Our community libraries play an important role in raising awareness about the naturalization process and the rights and responsibilities of U.S. citizenship. Stop by the Literacy/English Language Development (ELD) area in our Library to browse the Citizenship Corner in a display bordered with American flags. The shelves include citizenship test preparation materials along with information about the naturalization process, the N-400 form, instructions and guides to help adults move forward to becoming U.S. citizens. Also check out more helpful resources at <http://www.lislelibrary.org/literacy/literacy-sites>

Learn English at the Library

Need help with speaking, reading or writing in English? Visit the Library to attend one of our English as a Second Language classes and conversation groups. No registration or fees are required.

- **ESL For You! Classes:** Saturdays, 10 a.m. – Noon | Nov. 5, 19; Dec. 3, 17
- **Conversation Group/Book Discussion:** Saturdays, 10 a.m.–Noon | Nov 12, 26; Dec. 10

For more information about the LLD Literacy Programs: Contact Jean Demas, Literacy Outreach Librarian, at literacy@lislelibrary.org or 630-971-1675, ext. 1002.

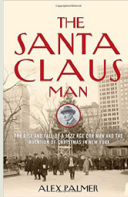
On Shelves Now!

A sampling of new material at Lisle Library. To find all new titles, go to lislelibrary.org. Click on the "New Materials" link under the "New and Notable" menu.



FICTION BOOKS

A Christmas Message: A Novel
by Anne Perry**
Christmas Caramel Murder by Joanne Fluke**
Christmas Bells by Jennifer Chiaverini
The Thanksgiving Visitor by Truman Capote
Holidays on Ice by David Sedaris



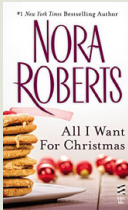
NON-FICTION BOOKS

Hanukkah in America: A History
by Dianne Ashton
The Santa Claus Man: The Rise and Fall of a Jazz Age Con Man and the Invention of Christmas in New York by Alex Palmer



YOUTH SERVICES BOOKS

Gracia, the Thanksgiving Turkey
by Joy Cowley
Kids in the Holiday Kitchen by Jessica Strand and Tammy Massman-Johnson
Shmelf the Hanukkah Elf by Greg Wolfe
The Latke Who Couldn't Stop Screaming: A Christmas Story by Lemony Snicket



AUDIOBOOKS

The Mistletoe Inn by Richard Paul Evans
All I Want for Christmas by Nora Roberts
Jane and the Twelve Days of Christmas
by Stephanie Barron
NPR Holiday Favorites



CDs

Songs of Joy & Peace by Yo-Yo Ma & Friends
Rockin Christmas Party
Christmas with the Rat Pack by Frank Sinatra, Dean Martin, and Sammy Davis Jr.
Songs in the Key of Hanukkah
by Erran Baron Cohen



DVDs

Eight Crazy Nights
Nightmare Before Christmas
A Christmas Story
Christmas Vacation
Scrooged



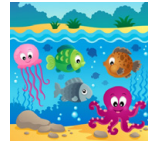
VIDEO GAMES

Deus Ex: Mankind Divided
Disney's A Christmas Carol
Batman: Arkham City
Hitman: HD Trilogy
Mario and Sonic at the Olympic Winter Games
DiRT Rally

**Indicates Large Print Available

Friday Kids Club

For Grades K-2. Registration required.



Under the Sea

Friday, November 11, 4 – 4:45 p.m.
Meeting Room A/B

Fish, lobsters, giant squids, and more! Come to the library to have fun with ocean themed books, activities, and crafts.



Animals on Parade

Friday, November 18, 4 – 4:45 p.m.
Meeting Room A/B

Who doesn't love a parade? Come to the library to learn about the fun history of parade floats and create your own balloon animals.



Outstanding Owls

Friday, December 2, 4 – 4:45 p.m.
Meeting Room A/B

Have a hoot at the library! Come enjoy owl books, activities and crafts!



Let it Snow!

Friday, December 9, 4 – 4:45 p.m.
Meeting Room A/B

Winter is coming! Celebrate the season with books, crafts, and science all about ice and snow!



Candy House Creations

Friday, December 16, 4 – 4:45 p.m.
Meeting Room A/B

Run, run, as fast as you can to the library for stories about the gingerbread man. You'll even get to make your own gingerbread house!

Fandom Fridays

For grades 6 and up. Registration required.



Mario Brothers

Friday, November 11, 4 – 5 p.m.
Meeting Room B

Are you into fandom? This month we battle with Bowser and save Princess Peach!



Pokemon

Friday, December 9, 4 – 5 p.m.
Meeting Room B

Are you into fandom? This month we try and catch them all!

• YOUTH AND TEEN PROGRAMS •

Registration for all Youth Services programs begins 2 weeks before program date. Visit lislelibrary.org or call 630-971-1675 to register.

Storytimes for Young Children

Register online at lislelibrary.org. Space is limited.

Little Movers & Shakers, Ages 6–24 months

9:30-10:15 a.m. | Meeting Room A

Tuesdays: November 8, 15, 29; December 6, 13

Wednesdays: November 9, 16, 30; December 7, 14

Thursdays: November 10, 17; December 1, 8, 15

Little Movers & Shakers Playtime, Ages 6-24 months

9:30 – 10:15 a.m. | Meeting Room A

Tuesdays: December 20, 27

Wednesdays: December 21, 28

Thursdays: December 22, 29

Toddler Storytime, Ages 2-4

10:30 – 11:15 a.m. | Meeting Room A

Tuesdays: November 8, 15, 29; December 6, 13

Wednesdays: November 9, 16, 30; December 7, 14

Thursdays: November 10, 17; December 1, 8, 15

Preschool Storytime, Ages 3–6

10:30-11:15 a.m. | YS Activity Room

Tuesdays: November 8, 15, 29; December 6, 13

Wednesdays: November 9, 16, 30; December 7, 14

Thursdays: November 10, 17; December 1, 8, 15

Pajama Storytime, Ages 2-6

Wednesdays, November 2, 16, 30; December 14, 28

6 – 6:30 p.m. | YS Activity Room

Saturday Storytime, Ages 2-6

Saturday, November 12, 26; December 10

10:30 – 11:15 a.m. | YS Activity Room

Thanksgiving Storytime, Ages 2-6

Tuesday, November 22

6 p.m. | Meeting Room A/B

Speed Racers

Monday, November 14 & Tuesday, November 15, 4 – 5 p.m.

Meeting Room A/B



And they're off! Using household materials, design your own racecar and compete to see whose is the fastest!

LEGO WeDo: Drumming Monkey

November 21 & November 22, 4 – 4:45 p.m.

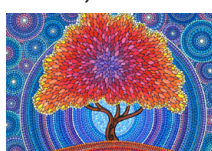
November 21 & November 22, 5 – 5:45 p.m.

Meeting Room A/B

Use the LEGO WeDo learning system to build a mechanical monkey that plays the drums. Learn about levers and how changing the cams can affect the monkey's beat!

Dot Art

Monday, November 28 & Tuesday, November 29, 4 – 5 p.m.



Meeting Room A/B

Pointillism is a painting technique that uses small dots to form an image. Come to the library to learn more about this fun style and to create your own masterpiece.

Mystery Bag Engineering

Monday, December 5 & Tuesday, December 6, 4 – 5 p.m.

Meeting Room A/B

Put your creativity and quick-thinking skills to the test! Using only the secret materials in your mystery bag, you will have to complete some sports-themed engineering challenges!

3D Board Games

Monday, December 12 & Tuesday, December 13, 4 – 5 p.m.

Meeting Room A/B



Do you love playing board games? Come to the library to create a 3D version of your favorite board game, or even make up your own!

String Art

Monday, December 19 & Tuesday, December 20, 4 – 5 p.m.

Meeting Room A/B



Art can be made of all different materials, including string! Come to the library to create colorful, geometric pieces of art using string.

Kids Programs & Events

Monday Fundays & Terrific Tuesdays

For grades K-5. Registration required.

Fairy Tale Science

Monday, November 7 & Tuesday, November 8, 4 – 5 p.m. |

Meeting Room A/B



Everyone knows the story of Jack and the Beanstalk, Rapunzel, and other fairy tales. But now we'll put a new spin on these classics and look at the science behind our favorite stories!

• YOUTH AND TEEN PROGRAMS •

Registration for all Youth Services programs begins 2 weeks before program date. Visit lislelibrary.org or call 630-971-1675 to register.

Science Saturday

For Grades 3-6. Registration required.

Crime Scene Investigation Lisle

Saturday, November 5, 10:30 – 11:30 a.m.

Meeting Room B



Are you observant enough to be a crime scene investigator? Come be a forensic scientist and use the tools of the trade to find out who done it!

Special Programs

Holiday Hop

Tuesday, December 20, 10:30 – 11:15 a.m. | Meeting Room A

The Holiday Hop is back! Come in for a special song and dance only storytime. We will be dancing and grooving to some of our favorite holiday songs! For ages 2-6. Registration required.

Winter Reading Program

December 1 through January 6

The cold weather keeping you indoors? Join our **Winter Reading Program** and earn prizes for all the reading you're doing! Complete missions to earn badges and see if you can collect them all! For ages 3-12.

Glitter Jar Buddies

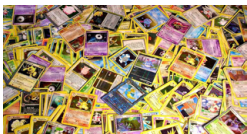
Wednesday, December 28, All Day | Youth Services Department



What are you going to do before the fun of New Year's Eve? Come to the library for a drop-in craft! We will be making Winter Glitter buddies. Decorate yours however you like! For all ages.

Pokémon Club

Wednesdays, November 9, 23; December 7, 21, 4:30 – 5:30 p.m.
Meeting Room B



Do you think you have what it takes to be the best? Join other aspiring trainers at our Pokémon Club! We will play a few Pokémon themed games and play both the card and video games. Play, trade, and meet some other trainers! For ages 6-13.

Mario Kart Tournament

Fridays, November 18; December 16, 4:30 – 6 p.m.
Meeting Room A

Enter and compete for the title! For ages 5-12.

YA Thursdays

For grades 6 and up. Registration required.

DIY Wands

Thursday, November 17, 4 – 5 p.m. | Meeting Room B



In celebration of the release of *Fantastic Beasts and Where to Find Them*, we will be making our very own wands!

Interactive Harry Potter and the Order of the Phoenix Movie

Thursday, December 1, 4 – 6:30 p.m. | Meeting Room A



Locomotor Mortis! Join us for an interactive showing of *Harry Potter and the Order of the Phoenix*! We will be hosting trivia, mocking Umbridge, and more throughout the movie, so grab your wand and settle in!

Games, Games, Games

Thursday, December 22, 3:30 – 5 p.m. | Meeting Room A



Love gaming? We do too! Bring your friends or make some new ones, and come hang out and play board games with us! We will also have the Wii set up!

Teen Program & Events

Magic the Gathering & Board Game Night

Wednesdays, 6:30 – 8:30 p.m.



Meeting Rooms/Check online calendar for specific room availability

Are you looking for somewhere to play Magic and find new people to play with? Or friends to play our selection of board games? Come join the fun!

TEEN: Exam Cram!

Tuesday, December 20, 4 – 8 p.m. | Meeting Room A/B



Looking for a place to study for final exams? Look no further than Lisle Library District! Enjoy brain-fueling snacks as you prepare for the final leg of school before Winter break! Join us for the first hour of Exam Cram to sign-up for a 15-minute study session with one of our 4-legged tutors (note: dogs do not possess accredited degrees from human institutions of higher learning.)

• ADULT PROGRAMS •

Registration is required for programs. Register online through the calendar at lislelibrary.org or by calling 630-971-1675.



Preserving Your Family History: A How-To for Family Historians

Tuesday, November 8, 7 – 8 p.m.
Meeting Room A/B

Do you want to preserve your family's history, collect oral histories or know how to safeguard precious family mementos? Join local historian Brian Failing as he discusses the answers and more. Failing will also cover information and resources available to all. You are welcome to bring in family mementos/objects to find how to best preserve them.

History of Midway Airport

Friday, November 11, 7 – 8:30 p.m. | Meeting Room A/B



Calling all aviation aficionados! The story of Midway Airport is the story of Chicago aviation from the dawn of powered flight. Join David Kent, author of *Images of Aviation*, as he shares information from interviews with pilots, airline employees, and mechanics to unpack not only the history of Midway Airport but of Chicago.

American Troubadours: The Songs of Guthrie, Dylan, Springsteen, and Mellencamp!

Tuesday, November 15, 6 – 8 p.m. | Meeting Room A/B



Join David Masciotra, faculty at University of St. Francis and author of *Mellencamp: American Troubadour*, and Kev Wright, guitarist and former co-songwriter of *The Righteous Hillbillies*, for a special presentation on American songwriting tradition, culture and musical history.



Shakespeare 400 at LLD!

Tuesday, November 29, 7 p.m.

Join us in commemorating 400 years since Shakespeare's death in 1616. From live performances to festivals to Shakespearean gardens, write/blogger and LLD Board Trustee Colleen Sehy, shares great insider tips on finding Shakespeare in the U.S. *Light refreshments and merriment forthcoming.*



Bottle/Wine Charms!

Tuesday, December 13, 7 – 8:30 p.m. | Meeting Room A/B



Wondering which mineral water or wine glass is yours? Join us for a bottle/wine charms craft! Each person designs and takes home charms. **Supplies provided. Limited to 30 individuals. Registration opens Tuesday, November 29.**

Lisle Library District Presents: A Very LLD Christmas

Friday, December 16, 7 – 8 p.m. | Lisle Library District Atrium



Join LLD Board President, Richard Flint and Home Delivery Coordinator, Winona Patterson, for a special night of Christmas music! Traditional favorites and a few surprises are in store. *Light refreshments will be served.*



Adult Winter Reading Program

December 1, 2016 through January 6, 2017

Not sure what to do with yourself during the winter festivities? Looking for a break from the holiday madness? Join our new **Adult Winter Reading Program!** During the month of December, read as many books as you can for your chance to win the grand prize. Open to adults and teens! Check with the Connection or Reference desks for more information!



My Next Book: Recommendations Just for You!"

Looking for a great book to read? Our librarians can help! Visit lislelibrary.org/my-next-book, fill out the form, and we'll respond to you within 2 business days with your next great read!

• ADULT PROGRAMS •

Registration is required for programs. Register online through the calendar at lislelibrary.org or by calling 630-971-1675.

Technology Classes

Researching Your Family History

Monday, November 14, 2 – 3 p.m. | Meeting Room B



The Library offers two databases that include information such as census data, passenger lists, military records, and much more. In this class, learn how to use *Ancestry Library Edition* and *HeritageQuest Online*. Registration required.

What's (the) hoopla all about? Tips on using hoopla!

Tuesday, November 15, 2 – 3 p.m. | Meeting Room B



Are you an LLD cardholder interested in hoopla? Learn about this fabulous digital platform, chocked full of movies, music, eBooks, comics and graphic novels. In this fun presentation, we will learn the basic overview of hoopla, and if you like, we'll help get you started using hoopla on your own device! Registration required. *Please note: You will need to know your Apple ID or Google login information if you would like assistance with installing the app on your device.*

Facebook for Beginners

Thursday, December 1, 3 – 4 p.m. | Meeting Room B



New to Facebook? Want to know what all the fuss is about? Learn how to set up an account, find your friends, post photos and more! Registration required.



Book and Film Discussion Group eNewsletter

LLD has five book groups and one film group that meet monthly! With groups dedicated to mystery, non-fiction, fiction, and science fiction/fantasy, there's a group for everyone's interests!

Sign up for our monthly Book and Film Discussion Group eNewsletter so you'll never miss a thing! <http://bit.ly/2cqVG75>

Book and Film Groups

Titles available at Reference Desk

Booked for the Day

📖 lislelibrary.org/bookedfortheday

Covering fiction, nonfiction and classics

Mondays, 11 a.m., Meeting Room B

November 7: *Stalin's Daughter War* by Rosemary Sullivan

December 5: *The Book of Aron* by Jim Shepard

Fixed on Fiction

📖 lislelibrary.org/fixedonfiction

Primarily fiction – contemporary/historical/classics

Thursdays, 7 p.m., Meeting Room B

November 10: *Babbitt* by Sinclair Lewis

December 8: *What Was Mine* by Helen Klein Ross

Just the Facts Nonfiction

📖 lislelibrary.org/justthefacts

Discuss nonfiction, including history and memoirs

Wednesdays, 7 p.m., Group Study Room

November 16: *How to be a Victorian* by Ruth Goodman

December 21: *H is for Hawk* by Helen Macdonald

Murder Among Friends Mystery

📖 lislelibrary.org/murderamongfriends

Variety of mysteries; often with author call-ins/appearances

Thursdays, 7 p.m., Meeting Room B

November 17*: *Ordinary Grace* by William Kent Krueger

December 15: *Open Season* by C.J. Box

*Author will call-in for discussion

Science Fiction/Fantasy

📖 lislelibrary.org/sciencefictionfantasy

SciFi plus fantasy equals a very lively group

Wednesdays, 7 p.m., Meeting Room B

November 30: *Lexicon* by Max Berry

December 21: *Midnight Riot* by Ben Aaronovitch

Just Between Frames Film Group

📖 lislelibrary.org/justbetweenframes

Current and classic movies for film lovers 17 and up

Mondays, 6 p.m., Meeting Room B

November 28: *Without a Clue*

December 19: *Mr. Holmes*



Lisle Library District

777 Front Street
Lisle IL 60532-2287

NONPROFIT ORG
US Postage Paid
Lisle IL
Permit No. 208

November/December 2016



ECRWSS

Lisle Library Patron Local
Lisle IL 60532

• FRIENDS OF THE LIBRARY •

The Friends of the Lisle Library District is now a 501c3 organization. Monetary contributions to the Friends are welcome and are tax deductible.



Upcoming Friends of the Library's Fall Book and Media Sale

Thursday, November 3 through Saturday, November 5 | During Regular Library Hours

Come stock up your bookshelves at the Fall Used Book & Media Sale! Thursday, November 3 is exclusively for members of the Friends of the Lisle Library, but non-members can join for \$2 at the door. Friday and Saturday there's no admission.

Anyone with a pickup truck who is willing to haul books to and from our book sale, please email Friends of the Library President Doug Cunningham at docunningham@gmail.com



Four Shillings Short

Sunday, November 13 at 2 p.m. | Meeting Room A/B

Four Shillings Short perform traditional and original music from the Celtic Lands, Medieval and Renaissance Europe, India and the Americas on over 30 World instruments including Hammered & Mountain Dulcimer, Mandolin, Mandola, Bouzouki, Tinwhistles, Recorders, and Medieval and Renaissance Woodwinds.



The Bittersweet Christmas Band

Sunday, December 11 at 2 p.m. | Meeting Room A/B

Join us for traditional and contemporary holiday music from the Bittersweet Christmas Band! Artists Phil Cooper, Kate Early and Margaret Nelson join forces with songwriter Susan Urban for a show that presents every possible perspective on the holiday season from the reverent to the ridiculous.