



777 FRONT ST. • LISLE, IL • 630-971-1675 • LISLELIBRARY.ORG

CONNECTIONS

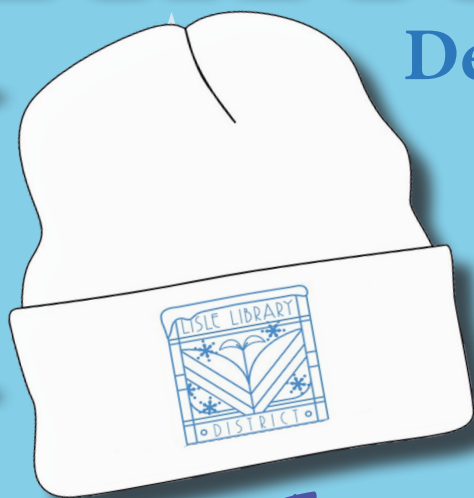
DECEMBER '24 - JANUARY '25

WINTER READ!

Dec. 1 - Jan. 10

Adult

Read and log two books
between Dec. 1 and Jan. 10 to
win an LLD glass mug!



Kid/Teen

Earn an LLD winter hat by completing
four challenges on the YS Winter Read
bingo card!



Winter Fest

Friday, Dec. 13 @ 5-7PM

Winter Fest is here! Meet real reindeer! Grab a churro to keep you warm, participate in the Snowman Scavenger Hunt, and take a photo in the seasonal photo booth. Storytime begins at 5PM, followed by all-ages bingo from 5:30-7PM with fabulous prizes! See you there!

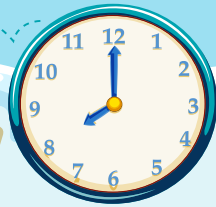
Visit
lislelibrary.org
or download the
Beanstack Tracker
app to register for
Winter Read!



Registration is required.

Register using the online calendar at lislelibrary.org or by calling 630-971-1675

Story Time!



PAJAMA STORYTIMES

Come join our special pajama storytimes where we read, sing, and dance to different themes!

Dec 11 @ 6PM: Travel

Jan 23 @ 6PM: Cozy



PRINCESS STORYTIME DEC 28 @ 10:30AM



Join our special winter break storytime where we read, sing, and dance. We will have special guests from Magical Starlight Theatre's production of *Rodgers + Hammerstein's Cinderella* (featuring Ella and Fairy Godmother).

LITTLE MOVERS AND SHAKERS WALKING - 2 YRS

Mondays @ 9:30AM Wednesdays @ 10:30AM

Dec 2, 9, 16 Dec 4, 11, 18

Jan 6, 13, 20, 27 Jan 8, 15, 22, 29

Thursdays @ 10:30AM

Jan 9, 16, 23, 30



BITTY BABIES
AGES: 6 WKS - 1 YR
Tuesdays @ 9:30AM
Dec 3, 10, 17
Jan 7, 14, 21, 28

STORIES AND SONGS AGES: 2+

Wednesdays @ 9:30AM Thursdays @ 9:30AM

Dec 4, 11, 18 Dec 5, 12, 19

Jan 8, 15, 22, 29 Jan 9, 16, 23, 30



MUSIC AND MOVEMENT AGES: 3+

Tuesdays @ 10:30AM

Dec 3, 10, 17

Jan 7, 14, 21, 28



COOKIES AND CRAYONS

GRADES PRE-K-3

DEC 7 & JAN 4 @ 9:30AM

Have a snack and make fabulous art on Saturday morning. Completed works of art will be posted in the Youth Services Department for everyone to admire, with artist permission of course!



LEGO-BUILDERS

GRADES K-4 DEC 11 & JAN 8, 22
4PM | MEETING ROOM A/B

Open LEGO play session; LEGOs and challenges will be provided.

Pokémon Club

GRADES K-4 | DEC 4, 18 & JAN 15, 29
4PM | MEETING ROOM A/B

Pokémon fans unite! Play games and complete a craft, all with a Pokémon theme.

ARTSTRAVAGANZA

AGES 2-6 | 10AM | MEETING ROOM B

Don't make a mess at home; come to the Library! Each week we will have a different craft or sensory experience. Stay a few minutes or the whole hour of fun!



Dec 6: Snowy Owl Painting
Dec 13: Rainbow in a Bag
Dec 20: Chalk Pastel Snowmen
Jan 10: Watercolor Star Painting
Jan 17: Newspaper Penguin
Jan 24: Balloon Painting
Jan 31: Paper Plate Fish



Books & Banter

GRADES 4-8 | 1PM | MEETING ROOM B

Registration opens 5 weeks before the book club meeting.



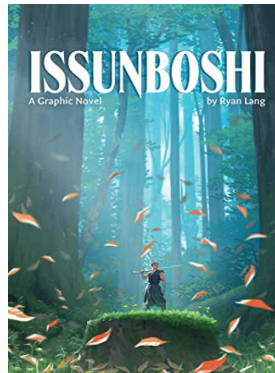
MOVIE EDITION

Dec 28

Jack Frost: The Guardians of Childhood
by William Joyce

Read the book then join us to watch the film adaptation.

Refreshments provided.



Jan 25

Issunboshi by Ryan Lang

Join others on the fourth Saturday of every month as we discuss a different title.

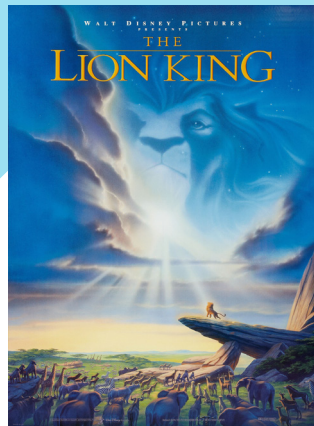
Friday Night Sing-Along

6:30PM | MEETING ROOM A/B

Come and sing along to animated classics!



Dec 6
Frozen



Jan 3
The Lion King

Funday Afternoon

MEETING ROOM B @ 4PM

GEOMETRIC SNOWFLAKES

DEC 2 (GRADES K-3)/DEC 5 (GRADES 3-5)

Use basic shapes to create snowflake decorations to hang up all winter long.

GLOWING PAINTINGS

DEC 9 (GRADES K-3)/DEC 12 (GRADES 3-5)

Make a blacklight craft with glow-in-the-dark paint.

SOLSTICE CELEBRATIONS

DEC 16 (GRADES K-3)/DEC 19 (GRADES 3-5)

Celebrate the Winter Solstice with fun festive crafts.

TWINKLE, TWINKLE

JAN 6 (GRADES K-3)/JAN 9 (GRADES 3-5)

Learn basic sewing skills while creating glittering constellations.

SNOW SLIME

JAN 13 (GRADES K-3)/JAN 16 (GRADES 3-5)

Mix together a slime recipe perfect for this snowy season.

ICE, ICE, BABY

JAN 20 (GRADES K-3)/JAN 23 (GRADES 3-5)

Make icicles that will never melt.

EDIBLE IGLOOS

JAN 27 (GRADES K-3)/JAN 30 (GRADES 3-5)

Build mini igloos that you can snack on at home.

Saturday Morning Cartoon Party

10AM | MEETING ROOM B

Join us for a morning of snacks and a movie!



Dec 21
Inside Out 2



Jan 18
Despicable Me 4

Registration is required.
Register using the online calendar at lislelibrary.org or by calling 630-971-1675

TEENS

Grades 6-12 unless otherwise stated

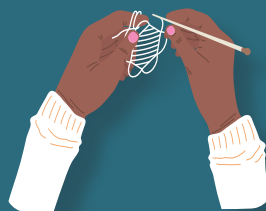


DEC 3
TUESDAY

TEEN CRAFT: BRAIDED BEAD BRACELETS

5:30PM TEEN ROOM

Make a colorful bracelet for yourself or as a gift!



JAN 4
SATURDAY

KNITS AND LOOPS (GRADES 5-12)

5:30PM TEEN ROOM

Join our new monthly knit and crochet club! Whether you already know how to knit or crochet (or do both!) or have never done either, we can teach you how! Bringing your own projects and tools is encouraged, but not necessary.

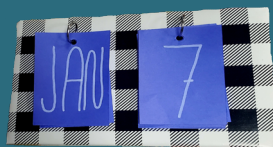


DEC 10
TUESDAY

TEEN CRAFT: SCRAPBOOK COLLAGE EVERGREENS

5:30PM TEEN ROOM

Use colorful scrapbook paper to create decorative winter trees!



JAN 7
TUESDAY

TEEN CRAFT: PERPETUAL CALENDAR

5:30PM TEEN ROOM

Create a calendar you can use year after year!



DEC 30
TUESDAY

WHO'S TAYLOR SWIFT ANYWAY? EW — TSWIFT TRIVIA

2PM MEETING ROOM A & B

Join us for Taylor Swift trivia and friendship bracelet making!



JAN 14
TUESDAY

TEEN CRAFT: EMOJI FORTUNE TELLER

5:30PM TEEN ROOM

Craft an emoji fortune teller out of acrylic and shrink plastic! Like a Magic 8 ball, but better!



JAN 3
FRIDAY

HOT CHOCOLATE AND A MOVIE

1PM TEEN ROOM
Join us for a movie afternoon, featuring a hot chocolate bar and showing of *The Hunger Games: The Ballad of Songbirds and Snakes*!

0000

TEEN MANGA BOOK CLUB

6:30PM TEEN ROOM

Manga lovers, join other teens as we discuss a different title each month.



Dec 27:
Yona of the Dawn
by Mizuho Kusanagi



Jan 24:
Naruto
by Masashi Kishimoto

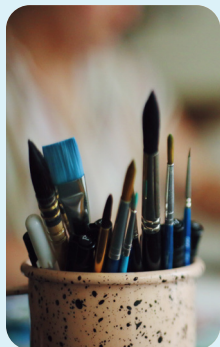
"believe it!"

!!!

Registration is required.

Register using the online calendar at lislelibrary.org or by calling 630-971-1675

Adults



ADULT CRAFT KITS

Sign up on Monday for the week's kit and pick up in Adult Services.

Dec 16-20:
Snowflake Garland

Jan 27-31:
Washi Tape Book Corners

DEC 7
SATURDAY

NAVIGATING THE GRIEF JOURNEY



Registered Nurse, Sharon Bowers, presents supportive means to navigate the grief journey and discusses self-care, healthy coping mechanisms, and local grief care resources. The session concludes with a rose presentation honoring each participants' loved ones.



FOOD FOR THOUGHT: A CULINARY DISCUSSION GROUP POTLUCK MEETING

Join us for this special meeting. Come prepared to share, eat, and mingle while we talk about the cookbook, recipe, and experience

of creating our dishes. Please visit LLD Event Calendar to register with details about your planned dish!

DEC 14
SATURDAY

DEC 15 HOLIDAY CENTER PIECES

SUNDAY

2PM MEETING ROOM A&B

Peggy Garvin, of Garvin Gardens in Elgin, demonstrates how to create holiday center pieces using fresh flowers. All attendees will be entered into a drawing for a chance to win an arrangement.



DEC 19

SENIOR SOCIAL HOUR

JAN 16

THURSDAYS

10AM
MEETING ROOM A

Get out into the community with Senior Social Hour! Join us for snacks, puzzles, and a chance to spark conversation with your peers!



DEC 20
FRIDAY

ADULT CRAFT: PENGUIN ROCK ART

7PM MEETING ROOM B
Create an adorable rock penguin with paints, and complete the scene with a wintery painted wood slice background!

DEC 28

JAN 25
SATURDAYS

CRAFT & COFFEE

10AM MEETING ROOM A&B
Bring your own crafting project and join us as we chat, craft, and enjoy coffee, tea, and snacks.

JAN 4

SATURDAY

CHICAGO IN THE CLASSICS

2PM MEETING ROOM A/B

The Windy City has long been the backdrop to many classic films. Film historian Dr. Annette Bochenek discusses sets in Chicago, the locations portrayed, and the influence of these depictions today.

JAN 5

SUNDAY

CAREER HEADSHOTS

2-4PM MEETING ROOM A/B

New year, new headshots! Have your headshot taken at the Lisle Library District and received it via email within a week. No registration required! First come, first served!

JAN 9

THURSDAY

FOOD FOR THOUGHT: A CULINARY DISCUSSION GROUP

7PM MEETING ROOM A

Home chefs, join us for a culinary discussion group meeting! Pick one cookbook that fits the month's theme: **Casseroles or One-Pot Meals**. Choose one recipe from the book to create before we meet, and come prepared to share experiences, pictures, and recommendations!

JAN/FEB GALLERY 777 ARTIST RECEPTION:

THE WORKS OF JOHN BENAGES

7PM GALLERY 777

The LLD is proud to present the work of John Benages. The exhibit runs through February, but don't miss the opening night reception on January 10 at 7PM. Meet the artist and enjoy light refreshments at Gallery 777!



JAN 10
FRIDAY



Registration is required.

Register using the online calendar at lislelibrary.org or by calling 630-971-1675

JAN 11 ORGANIZING 101: ORGANIZING ANYTHING ANYWHERE

SATURDAY

2PM MEETING ROOM B

Join Jennifer Barnes, of JB Organizing, as she discusses types of organizers and how our personalities affect how we organize in order to be effective. She'll review the 5 Principles of Organizing and how to apply them to anything, anywhere.



JAN 17
FRIDAY

ADULT CRAFT: JUNK JOURNAL

7PM MEETING ROOM B

Bind your own journal and personalize it with an assortment of odds and ends, from buttons and sequins, to scrapbook paper and stamps!



JAN 21

TUESDAY

TAXES ARE EVERYONE'S BUSINESS

7PM VIA ZOOM

Join Judi Strauss, E.A., of Strauss Tax Service, as she helps individuals navigate the myriad of taxes for 2024.



Literacy

ESL for You!

Dec 7 & 21 Jan 4 & 18

SATURDAYS @ 10AM OAK STUDY ROOM

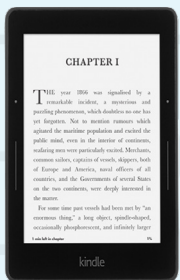
Come to our ESL for You! classes to improve English skills, including engaging in conversation. Registration is not required.

TECHNOLOGY CLASSES

KINDLE EREADER FUNDAMENTALS

THURSDAY, DEC 5 @ 7PM | MEETING ROOM B

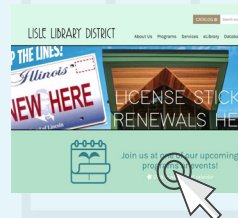
Get to know your Kindle eReader in this introductory class. Topics include navigation and settings, as well as buying, borrowing, and reading eBooks. Bring your device for personalized assistance.



USING THE LLD WEBSITE

TUESDAY, DEC 10 @ 7PM | MEETING ROOM A

The Library recently refreshed its website for easier navigation and an improved user experience. Join us to learn how to use *My Account*, learn how to register for Library events, reserve study rooms, use *Databases*, and more!



ANDROID PHONE FUNDAMENTALS

TUESDAY, JAN 14 @ 7PM | MEETING ROOM B

Get to know your Android phone in this introductory class. Topics include navigation and settings, as well as installing and organizing apps. Bring your device for personalized assistance.



IPHONE FUNDAMENTALS

WEDNESDAY, JAN 22 @ 7PM | MEETING ROOM B

Get to know your iPhone in this introductory class. Topics include navigation and settings, as well as installing and organizing apps. Bring your device for personalized assistance.





ONLINE DEC-JAN EVENTS

Registration is required.

Register using the online calendar at lislelibrary.org or by calling 630-971-1675

THE MAGIC OF RAINA TELGEMEIER DEC 10 @ 7PM

Join New York Times bestselling author and illustrator Raina Telgemeier as she shares her experience as a writer and comic artist!



EXPERIENCE LITTLE WOMEN: THE MUSICAL AT HOME DEC 20-22

Originally presented on Broadway in 2005, watch the musical version of the beloved novel *Little Women*.
Registration limited!



CHICAGO PIZZA - PAST, PRESENT & FUTURE WITH STEVE DOLINSKY JAN 9 @ 7PM

Steve Dolinsky dishes on The Ultimate Chicago Pizza Guide: A History of Squares & Slices in the Windy City.



LOVE AND LAUGHS WITH MICHELLE BUTEAU JAN 23 @ 7PM

Join Michelle Buteau, stand-up comedian and host of the Netflix reality TV series "The Circle," for a night of love and laughs.



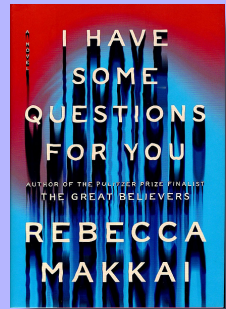
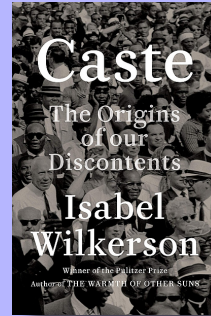
BOOK GROUPS

The LLD's book groups are offered in person during Dec/Jan. Visit the online calendar for more information.

BOOKED FOR THE DAY

DEC 2 @ 11AM

CASTE:
*THE ORIGINS OF OUR
DISCONTENTS*
by Isabel Wilkerson



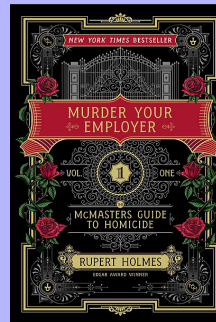
JAN 6 @ 11AM

*I HAVE SOME
QUESTIONS FOR YOU*
by Rebecca Makkai

FIXED ON FICTION

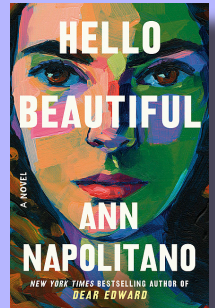
DEC 12 @ 7PM

*MURDER YOUR EMPLOYER:
THE MCMASTERS GUIDE
TO HOMICIDE*
by Rupert Holmes



JAN 9 @ 7PM

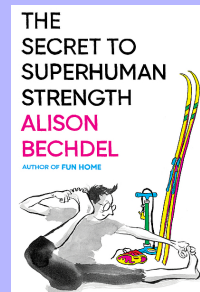
HELLO BEAUTIFUL
by Ann Napolitano



JUST THE FACTS (NONFICTION)

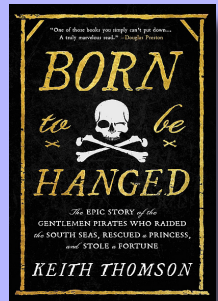
DEC 18 @ 7PM

*THE SECRET TO
SUPERHUMAN STRENGTH*
by Alison Bechdel



JAN 15 @ 7PM

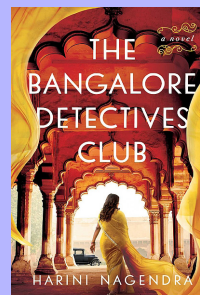
BORN TO BE HANGED
by Keith Thomson



MURDER AMONG FRIENDS

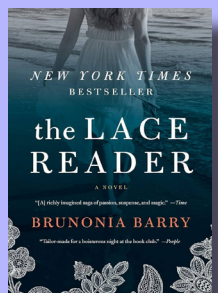
DEC 19 @ 7PM

*THE BANGALORE
DETECTIVES CLUB*
by Harini Nagendra



JAN 16 @ 7PM

THE LACE READER
by Brunonia Barry



SCIENCE FICTION / FANTASY

DEC 17 @ 7PM

NETTLE & BONE
by T. Kingfisher



JAN 29 @ 7PM

*THE ONCE AND
FUTURE WITCHES*
by Alix E. Harrow





LISLE LIBRARY DISTRICT

777 Front Street
Lisle IL 60532-2287

DECEMBER '24 - JANUARY '25

NON-PROFIT
ORG.
US POSTAGE
PAID
PERMIT #126
ELGIN, IL

Stay Connected!



Facebook



YouTube



Instagram



Flickr

ECRWSS

Lisle Library Patron Local
Lisle IL 60532

Closure Dates

Dec 24-25: Christmas Holiday

Dec 31-Jan 1: New Years



Stop in today!

Front Street

Lisle Library District
777 Front St.
Lisle, IL 60532



CHICAGO AUTHOR SERIES: DUPAGE ROOTS: THEN & NOW

JAN 23 @ 6:30PM MEETING ROOM B



Brian Failing, Executive Director of the Aurora Regional Fire Museum, discusses the book *DuPage Roots: Then & Now*. This book represents a full historical record of DuPage County and its growth. This is the first of three Chicago Author series events presented in partnership with The Museums at Lisle Station Park.



St. Joan of Arc

Kingston Avenue