



ANNUAL REPORT

FOR FY 2017 - 2018

ENRICH • EDUCATE • EMPOWER

ENRICH • EDUCATE • EMPOWER

LEADERSHIP

Board of Trustees

Jay Fisher *President*
Thomas Hummel *Vice President*
Longry Wang *Treasurer*
Marjorie Bartelli *Secretary*
Richard Flint *Trustee*
Liz Sullivan *Trustee*
Emily Swistak *Trustee*

LLD Team of Directors

Tatiana Weinstein *Director*
Beth McQuillan *Assistant Director*
Paul Hurt *Circulation Services Director*
Will Savage *Youth Services Director*
Elizabeth Hopkins *Adult Services Director*
Laura Murff *Technical Services Director*

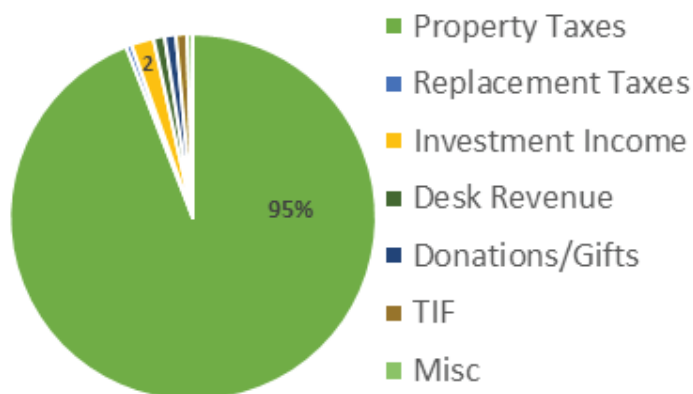


FY17 -18 FINANCIAL HIGHLIGHTS

The Lisle Library District (LLD) is a public library serving residents in the District. The LLD is responsible for all Library operations, materials, services, staff and for the maintenance of the facility. The LLD fiscal year runs July 1st - June 30th. Additional financial information, including the annual audit, is available on the Library's website lislelibrary.org.

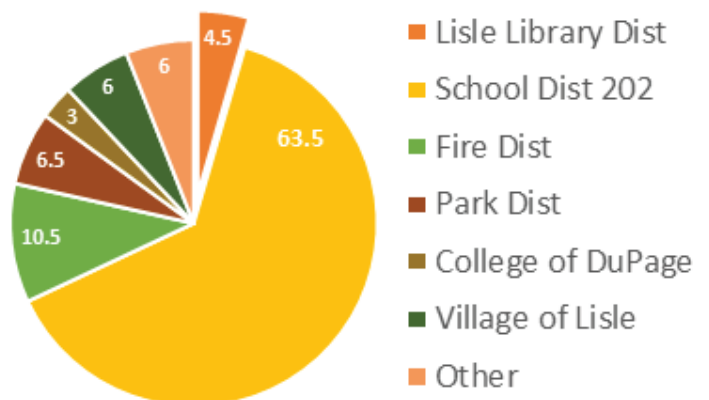
- The LLD received property (including deferred property tax revenue), TIF and replacement taxes of \$4,407,543 on an assessed valuation of \$1,207,428,945.
- The LLD has no debt and a relatively small amount of liabilities. Total liabilities = \$155,684.
- The LLD has a conservative investment policy and the majority of investments are 1-5 years in length. Investment income increased by 54.32% in fiscal year 2018 due to stabilizing investments, increased rate of returns and longer maturities.
- LLD fund balances at the end of the fiscal year:
 - General/Corporate - \$4,441,159
 - Special Reserve - \$2,959,240
 - Building/Maintenance, retirement and Social Security - \$979,462
- The fiscal year ended with actual budget expenditures \$213,690 under the working budget (Corporate Fund). This is largely due to paying close attention to costs, as well as renegotiating contracts and minimal and legal contingency funds.

The primary source of Library funding comes from property taxes:



Sample property tax bill for a home owner in the Library District, in the Village of Lisle, School District 202.

The Library portion of the total tax bill is 4.5%.





FY17 -18 BOOKS AND MATERIALS

LIBRARY CARD USE

479,017 checkouts
35,367 holds placed
4,765 interlibrary loans received
1,725 interlibrary loans supplied
39,025 digital downloads
31,694 internet/computer logins
32,897 database logins



NEW SERVICES AND TECHNOLOGY

Book Club in a Bag These circulating kits contain 10 copies of a discussion title and reading guide with questions and book club tips. Special loan periods and extra materials are designed to make facilitating a book club much easier for literary leaders.

1000 Books Before Kindergarten The goal of this program is simple: read 1,000 books with your child before they reach kindergarten! Any books - Library books, books from home, school books - are acceptable. The goal of the program is to promote reading to infants and toddlers.

Family Craft Programs These fun, interactive crafts are specifically designed for groups rather than individuals, and give adults with children a chance to participate in a craft together.

Literacy Launchpads These are convenient mobile devices pre-loaded with programs to help improve English skills. They are now located in a special collection near the Literacy Room.

Global Voices This new Youth Services section contains books written in languages from all over the world. These books are to help people share stories with a new generation in any language they wish!





FY167-18 LEADERSHIP

The Lisle Library District (LLD) is governed by a seven member elected Board of Trustees. The Board is elected in a regularly scheduled election by voters residing in the District. The Board is comprised of a President, a Vice President, a Secretary, and a Treasurer. There are three standing committees: Physical Plant, Personnel & Policy, and Finance. Regularly scheduled meetings are held on the second Wednesday of each month.

Tatiana Weinstein is the LLD Director and acts for the benefit of the residents of the District by directing services and programs in accordance with the Library's mission, vision, values, goals, and objectives, and is accountable to the Board of Trustees. Tatiana assists the Board in the formulation, design, and implementation of policy and long range planning. She is also responsible for managing day to day operations of the facilities, financial management, personnel matters, and all public programs.



(Trustees, left to right: Hummel, Fisher, Bartelli, Wang, Swistak, Flint, Sullivan)



(Director: Tatiana Weinstein)

FY17-18 COMMUNITY ENGAGEMENT AND STRATEGIC PLANNING



The LLD completed a comprehensive Community Engagement Project in November 2017. The LLD hired a consultant to facilitate focus groups, community forums and a District-wide community survey concentrating on service, collection, and facility needs.

In January 2018, the LLD Board President appointed the LLD Strategic Planning Committee (SPC). The SPC included all LLD Board members and key staff. The SPC focused on the results of the Community Engagement Project, Director-prepared reports on library trends, and statistical research.



FY17 -18 BY THE NUMBERS



GALLERY 777

6 - Art exhibits
170 - Patrons attending opening receptions

LITERACY AT THE LIBRARY

29 - LLD-sponsored English Language Development (ELD) classes
1149 - Patron Count for Literacy Room Use and Tutoring

ADULT HOME DELIVERY PATRONS

(Residents who cannot physically visit the Library)

55 - Average number of patrons in program
1006 - Number of bags of materials delivered
65 - Volunteer hours devoted to delivery

PATRONS

176,565 - Visitors
77,842 - Questions answered

MATERIALS

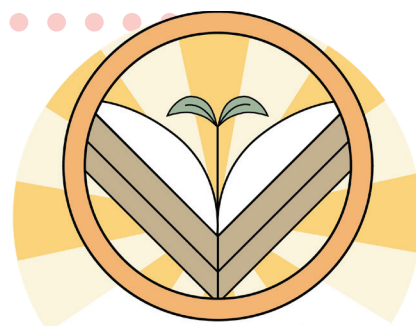
25,012 - Physical materials added/cataloged to the collection
11,547 - Digital materials added/cataloged to the collection

WINTER READ

425 - Adult participants
53 - Teen participants
265 - Youth participants

PROGRAMS

SUMMER READ 2018



LISLE LIBRARY
SUMMER READ

820 - Kids registered
114 - Teens registered
464 - Adults registered
2,187 - Adult titles read
547 - Teen titles read



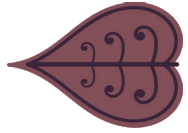
HARRY POTTER DAY

LLD's first all-ages celebration of everyone's favorite literary wizarding world.

400 - Attendees
154 - Scavenger Hunt participants
10 - Harry Potter-themed activities



FY17 -18 BY THE NUMBERS (CONTINUED)



9TH ANNUAL I LOVE MY LISLE LIBRARY CARD PROGRAM (SEPT)

35 - Business & nonprofit discount providers

184 - Patrons registered for cards

227 - Patrons renewed their cards

YOUTH SERVICES

8,120 - Program badges earned

190 - Spring Read participants

150 - Halloween Storytime attendees

581 - Total number of programs

10,950 - Total number of program attendees

ADULT SERVICES

69 - Book and Film Discussions lead by Librarians

64 - Teen programs; includes Teen Advisory Board (TAB) meetings

16 - Craft programs

42 - Computer and Technology programs

4,070 - Document scanner sessions





A YEAR IN PHOTOS

