



CONNECTIONS

February - March 2018

777 Front Street • Lisle, IL 60532 • (630) 971-1675 • lislelibrary.org



What Do You Love About the Library?

Want to express some feelings that won't go unappreciated?

Come in during February and tell us some of your favorite things about the Library by filling out one of the Hearts located at each service desk.

Then, watch as the hearts make their way around the Library. You might read about something you didn't even know we offered!

Harry Potter Day

Hogwarts at the Library!

Whether you're a full-fledged Harry Potter devotee or just a casual fan of the bespectacled wizard, Lisle Library District would like to invite you to its first-ever *Harry Potter Day*! This joyous celebration of all things wizardly will come to the Library on **Saturday, March 10th, from 12:00-3:00 PM.**

Join us for all-ages fun, games, and crafts! Attendees will be able to sort themselves into Hogwarts houses, try mystical crafts and foods, explore the Library with a J.K. Rowling-themed scavenger hunt (1:00 - 3:00 PM), learn about and meet live owls courtesy of the *Fox Valley Wildlife Center* (12:00 - 1:00 PM), use our magical photobooth, and watch *Prisoner of Azkaban* (starting at 2:00 PM). Costumes are encouraged. Whether you're an aspiring wizard, witch, or self-proclaimed muggle, we'd love to see you there!

Harry Potter Day

TIMELINE

OWL PRESENTATION 12:00 - 1:00 PM

 **SCAVENGER HUNT 1:00 - 3:00 PM**

CRAFTS AND TREATS 1:00 - 2:00 PM

 **MOVIE START 2:00 PM**



GALLERY 777

FEB. - MARCH EXHIBIT

The Tranquil Spirit

Julia Zhe Wang | Oil & Graphite

Friday, Feb. 9th, 6:00 - 8:00 PM

Gallery 777 is proud to present artist Julia Zhe Wang and her oil & graphite show *The Tranquil Spirit*.

The pieces will be displayed through March, but don't miss the **opening night reception Friday, February 9th from 6:00 - 8:00 PM.**

Lisle Library District

Library Hours

Monday - Friday

9:30 AM - 9:00 PM

Saturday

9:30 AM - 5:00 PM

Sunday

1:00 PM - 5:00 PM

Board of Trustees

Jay Fisher *President*

Thomas Hummel *Vice President*

Longry Wang *Treasurer*

Liz Sullivan *Secretary*

Marjorie Bartelli *Trustee*

Richard Flint *Trustee*

Emily Swistak *Trustee*

Board of Trustees meetings are held at 7:00 PM, on the second Wednesday of every month, and are open to the public.

THE NEXT LLD BOARD OF TRUSTEES MEETINGS:

Feb. 14th & March 14th
7:00 PM

in the Meeting Rooms

Library Staff

Tatiana Weinstein
Director

Beth McQuillan
Assistant Director

Paul Hurt
Circulation Services Director

Will Savage
Youth Services Director

Elizabeth Hopkins
Adult Services Director

Laura Murff
Technical Services Director

Josh Hepler
Communications Coordinator

If you are in need of an accommodation for a disability for a program or event, please contact us.

A MESSAGE FROM THE LIBRARY DIRECTOR

The Library concluded its *Community Engagement Project* in November of 2017 with a presentation to the Board and public ([details at lislelibrary.org](http://detailsatlislelibrary.org)). But "community engagement" does not end with one project. The Library will take what was learned from the project and build on those results via strategic planning. The LLD Board of Trustees, staff, and the residents will shape what the Lisle Library District will look like, what we offer, and how we provide services five, ten, fifteen, years down the line. Strategic planning is important in providing day-to-day guidance as well as forecasting our community's needs. *What will kids/teens need from their home Library in the next year or two? Can the LLD assist our seniors better? Business owners? How?* Those questions and many others will be explored through strategic planning. I look forward to working with the Board in forecasting the future of the LLD.

Tatiana Weinstein
Director | LLD

Family Yoga at the Library!

Friday, March 30, 6:30 PM – 7:30 PM | Meeting Room A/B

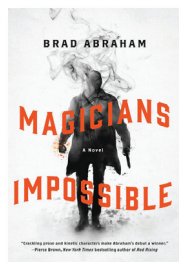


The family that Downward Dogs together, stays together! Join Yoga instructor Marti Anne on **Friday, March 30, from 6:30 - 7:30 PM** for a fun night of family yoga. No need to be an expert at yoga, and all ages are welcome. **Registration begins Friday, February 16, at 9:30 AM.**

Harry Potter Day is coming to the Library on March 10th!
Already finished the series? Never fear!

SO, WHAT DO I READ AFTER *Harry Potter*?

FICTION BOOKS



MAGICIANS IMPOSSIBLE

BY BRAD ABRAHAM

MIDNIGHT RIOT

BY BEN AARONOVITCH

MYTH-CHIEF BY ROBERT ASPRIN

JONATHAN STRANGE & MR.

NORRELL BY SUSANNA CLARKE

WITCH & WIZARD

BY JAMES PATTERSON

NON-FICTION BOOKS



THE SCIENCE OF HARRY POTTER BY ROGER HIGHFIELD
CHICAGO MAGIC BY DAVID ANTHONY WITTER
NOT IN KANSAS ANYMORE BY CHRISTINE WICKER
HIDING THE ELEPHANT BY JIM STEINMEYER
WIZARDS, ALIENS, AND STARSHIPS BY CHARLES ADLER

YOUTH SERVICES BOOKS



MAGYK BY ANGIE SAGE

EVEN FAIRIES FART BY JENNIFER NAN STINSON

THE WIZARDS OF ONCE BY CRESSIDA COWELL

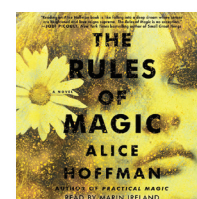
MISS ELLICOTT'S SCHOOL FOR THE MAGICALLY MINDED

BY SAGE BLACKWOOD

ABRACADABRA

BY H.P. NEWQUIST

AUDIOBOOKS



THE RULES OF MAGIC BY ALICE HOFFMAN
LADY MIDNIGHT BY CASSANDRA CLARE
THE MAGIC OF REALITY BY RICHARD DAWKINS
UNSEEN ACADEMICALS BY TERRY PRATCHETT

A DISCOVERY OF WITCHES BY DEBORAH HARKNESS

Technology Classes

Learn something new about the digital world. Registration required (with the exception of Drop-In classes).

eBooks & eAudiobooks with Libby!

Friday, Feb. 9, 2:00 PM - 2:45 PM | Connection Desk Drop-In



Access thousands of eBooks and eAudiobooks on your mobile device with a new Overdrive app called *Libby*. Drop by for a quick overview of this useful new app! This class is a drop-in, so no registration is required.

Consumer Reports & Consumers' Checkbook

Monday, February 12, 2:00 PM - 3:00 PM | Meeting Room B



Did you know that you can access *Consumer Reports* and *Chicago Consumers' Checkbook* online at the Library or from home with your LLD card? Join us for an overview of how to use these convenient online tools.

Movies, Books, & Music with Hoopla

Tuesday, Feb. 20, 2:00 PM - 2:45 PM | Connection Desk Drop-In



Stop by the Connection Desk for an overview on how to use *Hoopla* to access movies, eBooks, eAudio Books, and music on your computer or mobile device. This class is a drop-in, so no registration is required.

Facebook Basics

Wednesday, March 7, 7:00 PM - 8:00 PM | Meeting Room B



Are you new to Facebook and want to create your own account? Join us and learn how to create a profile, find friends, navigate the homepage, upload photos and adjust privacy settings. A current email account is required.

Career Skills with Learning Express Library

Monday, March 12, 7:00 PM - 8:00 PM | Meeting Room B



Improve your computer skills and test scores, find career and job information, and learn new techniques! Learn how to use *Learning Express Library* through the LLD website to update tech skills, access practice tests, and much more!

Use NoveList to Find Your Next Book!

Tuesday, March 20, 2:00 PM - 3:00 PM | Meeting Room B



Looking for new ways to find appealing books in the genres you're interested in? Starting a book group and need reading suggestions? We'll cover tips and tricks for hunting down great books using our catalog and *NoveList*!

ESL for You! Literacy/English Language Development (ELD) Class

Saturdays, 10:00 AM - Noon

Feb. 10 & 24 | March 3, 17, & 31

If you, or someone you know, needs help with speaking, reading, writing, or communicating in English, come to class! Class meets on the 1st, 3rd, and (when applicable) 5th Saturday of every month. No registration required; classes are in session all year.



Conversation Group Saturdays, 10:00 AM - Noon Feb. 10 & 24 | March 10 & 24

Improve your conversation skills at our English Conversation Group. Some speaking skills are required to learn new vocabulary words and phrases and to engage in lively conversation. For more information, contact Jean Demas at literacy@lislelibrary.org

TEEN BOOK CLUB

Pick up your book at the Circulation Desk beginning Jan. 19 (*Perks of Being a Wallflower*) & Feb. 16 (*Nick & Norah's Infinite Playlist*).

Readers Rejoice! The Perks of Being a Wallflower

Friday, February 16, 6:00 PM - 8:30 PM | Meeting Room B



Stephen Chbosky's *The Perks of Being a Wallflower* is told through a series of letters written by Charlie, a high schooler who is navigating all of life's ups and downs. His story is filled with humor and angst, and offers a bittersweet look at what it takes to keep moving forward. Read the book, then join us to watch the movie, snack, and discuss!

Readers Rejoice! Nick & Norah's Infinite Playlist

Friday, March 16, 6:00 PM - 8:30 PM | Meeting Room B

Nick and Norah's Infinite Playlist by Rachel Cohn and David Levithan is told through Nick and Norah's alternating voices and follows them on a roller coaster of a chance date night as they try to recover from past heartbreaks and forge new paths. Plenty of angst, humor, and music are packed into this title. Read the book, then join us to snack and discuss!



ARTISTS!



ARE YOU (OR DO YOU KNOW) A LOCAL ARTIST?



If you're a 2D artist, consider showing at Gallery 777! Visit lislelibrary.org/gallery-777 and submit an application to show in 2018!

• YOUTH PROGRAMS •

Registration for Youth Services programs begins two weeks before that program. Visit lislelibrary.org or call (630) 971-1675 to register.

STORYTIME AT LISLE LIBRARY DISTRICT

Little Movers & Shakers (6-24 months)

9:30 - 10:15 AM | Meeting Room A

Tuesdays **Feb. 6, 13** | **March 6, 13, 20, 27**

Weds. **Feb. 7, 14** | **March 7, 16, 21, 28**

Thursdays **Feb. 1, 8, 15** | **Mar. 1, 8, 15, 22, 29**

Babies who are crawling and walking are starting to notice the wide world around them. Let's sing, dance, and talk about it! Enjoy an interactive storytime with your little mover and shaker!



Toddler Storytime (ages 2-4)

10:30 - 11:15 AM | Meeting Room A

Tuesdays **Feb. 6, 13** | **March 6, 13, 20, 27**

Weds. **Feb. 7, 14** | **March 7, 14, 21, 28**

Thursdays **Feb. 1, 8, 15** | **Mar. 1, 8, 15, 22, 29**



Toddlers will interact with engaging books, music, and games that build on their growing love for language. Each storytime ends with an art project, so toddlers can let imaginations run wild.

Preschool Storytime (ages 3-6)

10:30-11:15 AM | YS Activity Room

Tuesdays **Feb. 6, 13** | **March 6, 13, 20, 27**

Weds. **Feb. 7, 14** | **March 7, 14, 21, 28**

Thursdays **Feb. 1, 8, 15** | **Mar. 1, 8, 15, 22, 29**

Have fun and build literacy skills in our Preschool storytime! Children will engage with books, stories, and songs, plus get creative with enriching art projects.



Registration is required, since space is limited.
Feel free to call register online at lislelibrary.org

FUNDAY MONDAY & TERRIFIC TUESDAY

Grades K-5. Registration required. **4:00 - 5:00 PM**
Mondays and Tuesdays, Meeting Room A/B.



Toy Shop Creations | February 5 & 6

Not every toy has to come from the store. Come in to make some of your own out of everyday objects!



Mind Bending Tricks | Feb. 12 & 13

Magic tricks are a blast, but sometimes they can be difficult to understand. Thankfully, math can help! Come learn the secrets behind the tricks!



LEGO WeDo Drop & Rescue | Feb. 19 & 20

Rescuing people is the first priority when natural disasters strike. Use Legos to figure out what works and what doesn't. (Two sessions: 4:00-4:45 or 5:00-5:45)



Minecraft Selfies! | Feb. 26 & 27

Combine two of your favorites, and get a Minecraft Selfie! Use graph paper and various other materials to create a unique self-portrait!

Crayon Printing | March 5 & 6

We'll talk about the history of printing and then craft our own monoprints from wax and sandpaper!



Stop and Go! | March 12 & 13

These are laws you can't break even if you want to! Join us as we break down Newton's laws of motion.



LEGO WeDo Moon Base | March 19 & 20

What would be the best way to explore the moon? We will craft some space rovers and discover for ourselves! (Two sessions: 4:00-4:45 or 5:00-5:45)



Fractals! | March 26 & 27

Don't know what a fractal is? Don't know what a fractal is? Don't know what a fractal is? Come in and find out!



THURSDAY KID'S CLUB

Grades K-2. Registration required. **4:00 - 4:45 PM**,
Thursdays, Meeting Room A/B.

Anything can be discovered in a book! Each week will focus on a different theme with books, crafts, science experiments, and more!



WACKY COLORS

FEB. 1

MAR. 1



EXPLORE DR. SUESS



BUTTON ART

FEB. 8

MAR. 8



GLUE!



VALENTINE'S DAY

FEB. 15

MAR. 15



ST. PATRICK'S DAY



3 LITTLE PIGS CHALLENGE

FEB. 22

MAR. 22



3-2-1... GO!



PLANETARIUMS

MAR. 29

Registration for Youth Services programs begins two weeks before that program. Visit lislelibrary.org or call (630) 971-1675 to register.

SCIENCE SATURDAY



Winter Challenge: Snow!

Saturday, February 3
10:30 AM – 11:30 AM | YS Activity Room
Put your engineering skills to the test by building snowflakes, igloos and snowmen with the materials provided. You'll have to be creative with this one! For grades 3-5.



Superhero Science

Saturday, March 3
10:30 AM – 11:30 AM | YS Activity Room
What makes Iron Man tick? How about Batman's awesome gadgets? Learn the science behind some of your favorite superheroes. For grades 3-5.

Pajama Storytime

Every other Wednesday, 6:00 PM – 6:30 PM | YS Activity Room



Bring your favorite stuffed animal and cuddle up for a night storytime at the library. Stories will be heard, songs will be danced to, and everyone will have a blast! For ages 2-6.

February 7 & 21 | March 7 & 21

Pokémon Club

Every other Wednesday, 4:30 PM – 5:30 PM | Meeting Room B



Do you think you have what it takes to be the best? Join other aspiring trainers at our Pokémon Club! We will play a few Pokémon themed games and play both the card and video games. Play, trade, and meet some other trainers! For ages 6-13.

February 14 & 28 | March 14 & 28

Mario Kart Tournament

Monthly, 4:30 PM – 6:00 PM (end times vary) | Meeting Room A



Think you've got what it takes to be Lisle's best Mario Kart Racer? Bring a few friends and enter to compete for the title. Grades K-5.

February 16 | March 16

Smash Brothers Night!

Monthly, 6:30 PM – 8:30 PM | Meeting Room A/B



Pick your favorite character, pick a level, and gather your friends for a fun night of delightful demolition as we play *Super Smash Bros.* on the Wii U!

February 20 | March 20

YA THURSDAY

Game Design with Bloxels

Thursday, Feb. 1, 4:15 PM – 5:30 PM | Meeting Room A or B



Learn how to create your very own multi-level video game! Using iPads and Bloxels boards, make a video game with dozens of levels and share it with your friends!

Treat Yo' Self

Thursday, February 15, 4:15 PM – 5:15 PM | Meeting Room B



Life is hard. Learn how to treat yourself to a little pampering with DIY lip balms, sugar scrubs, face masks, and more!

Now Boarding

Thursday, March 22, 4:15 PM – 5:15 PM | Meeting Room B



De-stress with a relaxing afternoon of board games and snacks! Try a new game or play one of your favorite oldies!

Subversive Embroidery

Thursday, March 29, 3:30 PM – 5:30 PM | Meeting Room A or B



Ever want to tell someone to go away, but leaving your couch . . . meh? Join subversive embroidery! Learn to embroider and tell the world how you really feel!

Between the Panels

Want to read comics, but aren't sure where to start? Love them already and want to share your faves and get new recommendations? Join our new YA Comic Book Club!

Thursday, Feb. 8 4:15 PM – 5:00 PM | Meeting Room A or B

Unbeatable Squirrel Girl by Ryan North

Thursday, March 8 4:15 PM – 5:00 PM | Meeting Room B

Nameless City by Faith Erin Hicks



FANDOM FRIDAY

Are you into fandom? Want to shout it from the rooftops (or maybe just find someone to geek out with)? Join us!

Black Panther Feb. 23, 4:15 – 5:15 PM | Meeting Room B

The movie is coming out! This month we travel to Wakanda!

Pacific Rim March 16, 4:15 – 5:15 PM | Meeting Room A or B
Hop in a jaeger and find out if you're drift-compatible!

• ADULT AND TEEN PROGRAMS •

Registration is required for programs. Register online using the Events Calendar at lislelibrary.org or by calling (630) 971-1675.

TEEN PROGRAMS

DIY Bath Bombs

Tuesday, February 6, 6:30 PM – 8:00 PM | Meeting Room B



Join us for this fun workshop where you will learn how to mix up and mold your own bath bomb and create one to take home!

Anime & Manga Club: Onigiri

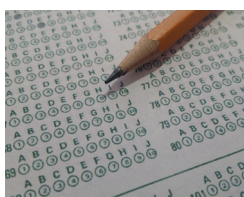
Tuesday, February 13, 6:30 PM – 8:00 PM | Meeting Room B



Do you love anime and manga? Want to find out what all the fuss is about? Join us to screen new anime, eat Pocky, and explore Japanese culture. This month we will make onigiri (Japanese rice balls), and there will be supplies and instructions to hand-sew an onigiri keychain to take home!

Practice SAT Exam

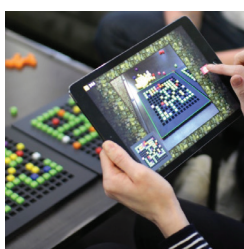
Saturday, February 24, 1:00 PM – 4:00 PM | Meeting Room A/B



The Lisle Library District, in cooperation with C2 Educate, will be hosting an SAT practice test. Work out your pre-test jitters by taking a practice exam.

Bloxels Video Game Creation Challenge

Tuesday, March 6, 6:30 PM – 8:00 PM | Meeting Room B



Use the Bloxels game board and app to create your own video game levels, design impenetrable bosses, craft your own game art, and add many more unique touches. Once you've created the ultimate level, challenge others to see who has created the most epic game.

Tech Week: Mini-Quadcopter Challenge

Friday, March 9, 6:30 PM – 8:00 PM | Meeting Room B



Get a crash course in operating mini-quadcopters, then create an obstacle course, and test your own skills by navigating one of the mini-copters through challenges. Winners will be determined by precision and speed! Prizes will be awarded!

DIY Succulent Planter

Thursday, March 29

6:30 PM – 8:00 PM | Meeting Room B



Choose your own succulent to plant, then decorate the planter to make your own artsy, elegant, or whimsical creation just in time for Spring!

ADULT PROGRAMS

50+ Mixer with Kym Franovelgia!

Thursday, February 8, 1:00 PM – 3:30 PM | Meeting Room A/B



Love is in the air! Kym Frankovelgia, singer extraordinaire, will perform an afternoon showcase of emotional and inspirational love songs through the decades. Afterwards, join us for light refreshments as we craft beautiful paper flowers and strike up conversations with other attendees.

FILM SCREENING: 13th and Community Discussion

Friday, February 9, 6:00 PM – 8:30 PM | Meeting Room B



Ava DuVernay's *13th* is a critically-acclaimed documentary focused on America's prison systems, which are disproportionately filled with African-Americans. Join us for this film screening and discussion as we delve into this thought-provoking look at the politics surrounding US prisons.

Lisle Library Writers Group

Third Friday of each month, 6:30 PM – 8:30 PM | Meeting Room A



The Lisle Library District's Writers Group shares three pages of written work (from fiction to nonfiction and everything in between) and gives helpful feedback. Writers can join commitment-free, anytime, and the door is open to all writers of any style.

February 16 | March 16

20s & 30s: Bad Art Party

Thursday, February 22, 7:00 PM – 8:30 PM | Meeting Room B



Cabin fever getting the best of you? Join us for a bad art party! Create the worst art imaginable and share your masterpiece with your cohorts. Odds and ends will be provided, and the worst art created will win a special, but very ugly, prize. Light refreshments will be provided.

ADULT CRAFT: Lovey-Dovey Coasters & Mugs

Tuesday, February 27, 7:00 PM – 8:30 PM | Meeting Room A/B



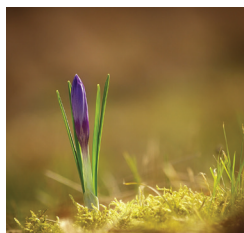
Want to tell that special someone you love them *and* prevent water rings on your table at the same time? Create some lovey-dovey coasters and mugs! Tiles, mugs, and paint markers will be provided to create magnificent décor that declares your love. Each person makes four coasters and one mug.

Registration starts Feb. 13, 9:30 AM.

Registration is required for programs. Register online using the Events Calendar at lislelibrary.org or by calling (630) 971-1675.

Seed Starting 101 with Mr. Brown Thumb!

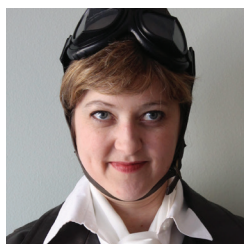
Sunday, March 25, 2:00 PM – 3:30 PM | Meeting Room A



Gardening season is approaching and the LLD Seed Library is back in full-swing. Join Mr. Brown Thumb - the blogger behind Chicago's oldest active gardening blog – who will explain the basics of starting plants from seed. Learn everything you need to know to grow your garden from seed!

Leslie Goddard Presents: Amelia Earhart

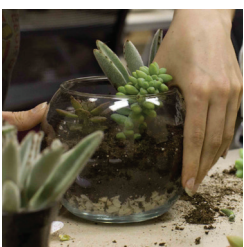
Saturday, March 31, 2:00 PM – 3:00 PM | Meeting Room A/B



Amelia Earhart's courageous exploits and spirited personality made her an international celebrity in the early 20th century. Leslie Goddard portrays Amelia Earhart and relives her experiences as the first woman to cross the Atlantic by airplane. Join us for a fantastic look into the life of an iconic legend of aviation.

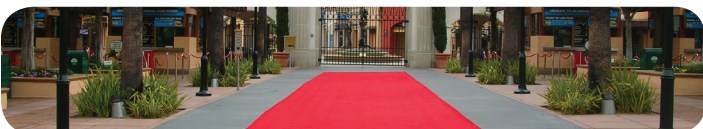
ADULT CRAFT: DIY Terrariums!

Tuesday, March 27, 7:00 PM – 8:30 PM | Meeting Room A/B



Spring is almost upon us! Add a bit of greenery to your home with a DIY terrarium! Everyone makes one terrarium, and will be given a variety of hardy plants to choose from. **Registration begins Tuesday, March 13, at 9:30 AM.**

PICK THE OSCAR WINNERS!



Beat the winter doldrums! Follow the red carpet to Lisle Library's **Pick The Oscar Winners** 2018 contest! Patrons will have a chance to see if they can guess the Oscar winners in 5 main categories. We'll pick 5 winners who come closest to getting all 5 categories correct. Winners will get movie-inspired snacks and a DVD from 5 of the Best Picture nominated films! Here are the details:

- Ballots will be available at the Connection Desk until Saturday, March 3rd at 5:00 PM.
- One ballot per person please!
- The 85th Oscars broadcast will be on Sunday, March 4th on ABC. Picks should be made based on who you think will win, not necessarily what you think should win.
- Winners will be announced on Monday, March 12th.

GOOD LUCK!



Book & Film Groups

Titles are available at the Reference Desk

Booked for the Day

Covering Fiction, Nonfiction, and classics.

lislelibrary.org/bookedfortheday

Mondays 11:00 AM | Meeting Room B

The Underground Railroad

by Colson Whitehead **Feb. 5**

American Philosophy John Kaag **March 5**

Fixed on Fiction

Primarily Fiction.

lislelibrary.org/fixedonfiction

Thursdays 7:00 PM | Meeting Room A

Lucky Boy Shanthi Sekaran **Feb. 8**

Commonwealth by Ann Patchett **March 8**

Just the Facts Nonfiction

Nonfiction, including history and memoirs.

lislelibrary.org/justthefacts

Wednesdays 7:00 PM | Group Study Room

In the Darkroom Susan Faludi **Feb. 21**

A Sting in the Tale Dave Goulson **March 21**

Murder Among Friends Mystery

Mysteries, with author call-ins and appearances.

lislelibrary.org/murderamongfriends

Thursdays 7:00 PM | Meeting Room B

A Small Death in the Great Glen

A.D. Scott **February 15**

A Share in Death Deborah Crombie **March 15**

Science Fiction / Fantasy

A variety of science fiction and fantasy books.

lislelibrary.org/sciencefictionfantasy

Wednesdays 7:00 PM | Meeting Room B

Wool Hugh Howey **Feb. 28**

A Closed and Common Orbit

by Becky Chambers **March. 28**

Just Between Frames Film Group

Current and classic movies for film lovers. 17

and up. lislelibrary.org/justbetweenframes

Mondays 6:00 PM | Meeting Room B

Adventures in Babysitting **March 26**



Lisle Library District

777 Front Street
Lisle IL 60532-2287

NONPROFIT ORG
US Postage Paid
Lisle IL
Permit No. 208

February - March 2018

ECRWSS
Lisle Library Patron Local
Lisle IL 60532

• FRIENDS •

The Friends of the Lisle Public Library District is a 501c3 organization. Monetary contributions to the Friends are welcome and tax deductible.



Matt Watroba in Concert

Sunday, February 18, 2:00 PM | Meeting Room A/B

Many know Matt Watroba as the voice of folk music in Michigan for his work with Detroit Public Radio and host of *Folks Like Us*, *Sing Out Radio Magazine* and *Folk Alley*. These connections have helped shape a repertoire and presentation that is unique on stages across the state and country. He is committed to inspiring the world to sing, one town at a time.

Jason & Ginger's 7th Annual Salute to Women of the Blues: Bessie and Billie

Sunday, March 4, 2:00 PM | Meeting Room A/B

Blues duo Jason Finkel and Ginger Curry are experts on the women of the Blues, having devoted an entire album to covering their repertoire. Fittingly, one of their sets will focus on Bessie Smith, the Empress of the Blues, and the other will focus on Billie Holiday, Lady Sings the Blues - in honor of Women's History Month.



Thanks to the Kiwanis and the Friends for Their Donations!



Thanks to the Friends of the Lisle Public Library District for their donation of a new storytime rocking chair in honor of longtime member Robin Sprietsma, and to the Lisle Kiwanis for their donation of children's sensory toys!