



777 FRONT ST. • LISLE, IL • (630) 971-1675 • LISLELIBRARY.ORG

# CONNECTIONS

DECEMBER 2021 - JANUARY 2022

## WINTER READ

*December 3  
thru  
January 7*

**Read with the LLD this winter! After reading and logging two books, adults and teens will receive a wintry travel tumbler. Kids! Complete a reading challenge to receive a snowman accessories kit! After making your snowman, warm up with instant cocoa mix (included)! Starting **December 3**, visit [lislelibrary.org](https://lislelibrary.org) to register!**

## WINTER READ KICK-OFF PARTY

**Friday, December 3 5 - 7PM**

**East Parking Lot & Meeting Room A/B**

**Celebrate the season and kick off the Library's Winter Read program! All ages will enjoy outdoor offerings such as hot chocolate from the Churros Y Chocolate food truck, visit two reindeer at a wintry petting zoo, play in some artificial (and less cold!) snow in the snow pit, and enjoy a special lit storytime walk! Remember to stop by the meeting room indoors to register for Winter Read, pick up a Snowman Canvas Craft Kit (while supplies last!), and check out some seasonally-themed Library materials.**

### *Food For Thought:*

#### *A Culinary Discussion Group*

**Thursday, January 6, 7PM  
Virtual (Zoom)**

**Home chefs, join us for our first culinary discussion group meeting! Pick one cookbook that fits the month's theme: Light, Fresh, & Healthy. Choose a recipe from the book to cook before we meet, and come prepared to discuss.**

**Visit <https://bit.ly/2XIDZh4> for a list of suggested cookbooks, or choose another that fits this theme. Register at [lislelibrary.org](https://lislelibrary.org).**



Registration is required.  
Register through the Calendar at [lislelibrary.org](http://lislelibrary.org) or by calling 630-971-1675

# KIDS

(In Person Programs)



## **SMALL GROUP TODDLER STORYTIME (AGES 2-3)** **MEETING ROOM A**

Tuesdays, Dec. 7-28 & Jan. 4-25  
Thursdays, Dec. 9-30 & Jan. 6-27  
@ 10AM

## **SMALL GROUP PRESCHOOL STORYTIME (AGES 4-5)** **MEETING ROOM A**

Tuesdays, Dec. 7-28 & Jan. 4-25  
Thursdays, Dec. 9-30 & Jan. 6-27  
@ 10:45AM

## **ZOOM STORYTIME (VIRTUAL)**

Mondays, Dec. 6-27 & Jan. 3-31  
@ 10:30AM  
Wednesdays, Dec. 8-29 & Jan. 5-26  
@ 6PM

## **FAMILY STORYTIME** **MEETING ROOM A**

Mondays, Dec. 6-27 & Jan. 3-31  
@ 6PM  
Wednesdays, Dec. 8-29 & Jan. 5-26  
@ 10:45AM



## **DISCOVERY BRIGADE (GRADES K-2)**

4PM MEETING ROOM A/B  
Dec. 13: Winter Shrinky Dinks  
Jan. 17: Lego WeDo



## **THURSDAY KIDS' CLUB (GRADES K-2)**

4PM MEETING ROOM A/B  
Dec. 16: Long Winter Nap  
Jan. 20: What's That Sound?



## **IMAGINATION INC (GRADES 3-5)**

4:30PM MEETING ROOM A  
Dec. 14: Rockets  
Jan. 18: DIY Snow Globe



## **STUDIO 777 (GRADES 3-8)**

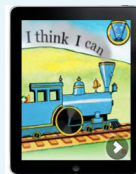
4PM MEETING ROOM B  
Dec. 22: Winter Wreath  
Jan. 26: Watercolor Coasters

## **FANDOM FRIDAY** GRADES 5-12 4PM MEETING ROOM A Dec. 17: Magic The Gathering Jan. 21: Harry Potter Firebolt Pencil



## **PRESCHOOL PROJECTS: ICE-TASTIC ART (AGES 3-5)**

DEC. 12 @ 2PM MEETING ROOM B  
Join us for snowy stories and icy art!



## **TECH TOTS: IPAD STORYTIME**

JAN. 22 @ 10AM MEETING ROOM B  
Explore new ways of engaging children and building literacy skills! This storytime combines interactive apps, eBooks, and traditional stories.



## **MARIO KART (GRADES K - 5)**

DEC. 16 & JAN. 20 @ 5PM MEETING ROOM A  
Think you've got what it takes to be Lisle's best Mario Kart Racer? Enter and compete for the title.



## **POKEMON CLUB**

DEC. 8 AND 22 & JAN. 5 AND 19 @ 4PM  
MEETING ROOM A  
Calling all Pokemon trainers! Come craft and play games, no personal cards required.



## *Display Case*

Do you have a collection you want to show off? Fill out an application for our showcase located outside the Youth Service department.

Registration is required.  
Register through the Calendar at [lislelibrary.org](http://lislelibrary.org) or by calling 630-971-1675

# KIDS

**PICK UP A  
PROGRAM  
KIT FOR  
HOME!**

## Take Home Kits (Registration Required)

### PRESCHOOL PROJECTS (AGES 3-5)

**DEC  
6-11**

#### SNOWFLAKE SALT CRYSTALS

Falling snow is our inspiration to create snowflakes with a few simple ingredients.

#### GINGERBREAD DOUGH

**DEC  
20-23**

Mold and decorate a gingerbread man and then take it apart and make a new one!

#### ICY ICICLES

**JAN  
10-15**

Create your own icicles that won't melt away!

#### SNOWMEN AT NIGHT

**JAN  
24-29**

What do snowmen do at night? Decide for yourself as you make your own nighttime scene!

### IMAGINATION INC (GRADES 3-5)

**DEC  
6-11**

#### SNOWFLAKE WINDOW DECORATIONS

Brighten up your windows with these colorful window decorations!

#### INDOOR SNOWMAN

**DEC  
20-23**

Have all the fun of making a snowman without the shivering.

#### SQUISHY WORRY PET

**JAN  
10-15**

Craft your very own soft and squishy worry pet to help fight off the winter doldrums.

#### CARDBOARD EXTENDIBLE CLAW

**JAN  
24-29**

Create your own extending grabber claw and never get up from your chair again.

### DISCOVERY BRIGADE (GRADES K-2)

**DEC  
6-11**

#### CINNAMON DOUGH ORNAMENTS

Create sweet smelling decorations for the holidays.

**DEC  
20-23**

#### CONFETTI LAUNCHER

Get ready to celebrate the New Year with a homemade confetti cannon.

**JAN  
10-15**

#### BUBBLE LIGHTS

Use simple science to make water bubble lights.

**JAN  
24-29**

#### SLEDDING RAMP CHALLENGE

Build a workable sledding ramp with simple materials.

**DEC  
6-11**

**DEC  
20-23**

**JAN  
10-15**

**JAN  
24-29**

### KIDS CLUB (GRADES K-2)

**FOREVERGREEN PINECONES**  
Make and decorate an evergreen.

**CLAY & CRAYON SNOWFLAKES**  
Craft some glittery snowflakes to keep inside this winter.

**WINTRY BIRDS**  
Craft some fluffy winter birds.

**ICY SUN CATCHERS**  
Using treasures from nature, craft a frozen sun catcher to hang outside.

### LITTLE MOVERS AND SHAKERS AT HOME EDITION (AGES 0-2)

Pick up a kit filled with a storytime prop, song lyrics, and fun activities. Then watch your favorite Librarians on YouTube!

Dec. 20-23:

**Baking**

Jan. 25-29:

**Magnets**

### SURPRISE BAGS

Register to receive a set of books that fit the monthly theme, along with some surprise goodies!

Dec. 13-18:

**Librarian Favorites!**

Jan. 17-22:

**Hobbies!**

### YA TAKE & MAKE (GRADES 5-12)

**DEC  
6-11**

#### PAPER STAR LANTERN

Brighten your winter with a homemade paper star lantern.

**DEC  
20-23**

#### RING IN THE NEW YEAR

Ring in the New Year with fun activities, a confetti shooter, and a prediction jar for the year to come!

**JAN  
10-15**

#### MERMAID SUGAR SCRUB

Start the New Year off with a fun new addition to your skincare routine and live your mermaid dreams!

**JAN  
24-29**

#### SLINGPUCK GAME

Challenge your friends and family to a competitive game of not-quite tabletop hockey!



Registration is required.  
Register through the Calendar at [lislelibrary.org](https://lislelibrary.org) or by calling 630-971-1675

## TEENS



**DEC 3**

**JAN 7**

FRIDAY

**TEEN ADVISORY BOARD (TAB) MEETING**  
6:30PM MEETING ROOM A (Grades 6-12)  
Make a positive impact and have fun with your peers by joining TAB! Visit us online or in person to get an application and bring it with to the meeting. *Note: Volunteers on Dec. 3 will be assisting with the Winter Read Kick-Off Party.*



**DEC 10**

FRIDAY

**TEEN CRAFT: MARSHMALLOW MUG**  
7PM MEETING ROOM A

Create your own marshmallow mug using sharpie markers or vinyl cutouts! Perfect for hot cocoa!

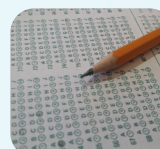


**DEC 30**

THURSDAY

**TEEN BOOK GROUP (& BOOKMARK CRAFT!)**  
7PM MEETING ROOM A

Pick up a copy of *My True Love Gave to Me*, along the Teen Wall beginning Monday, November 22. Read one or more of the short stories before our December 30 meeting, where we'll discuss what we've read, share the stories we loved and loathed, and make winter inspired bookmarks while we chat.



**JAN 15**

SATURDAY

**PRACTICE ACT**  
10AM MEETING ROOM A/B

Take a practice ACT Test proctored by C2Educate. Join a classroom of your peers (socially distanced and masked) for a full-length practice ACT test. Receive your score report either via email, or you may choose to meet in person to review your scores with a C2Educate staff member.



**JAN 21**

FRIDAY

**VIRTUAL ANIME & MANGA NIGHT!**  
7PM VIRTUAL (ZOOM)

Join us on Zoom as we screen anime, talk about our favorites, and enjoy a manga-inspired craft. Pick up an anime night kit at the Connection Desk beginning Friday, January 14 to be prepared with all the necessary treats and supplies for our virtual night.



**JAN 27**

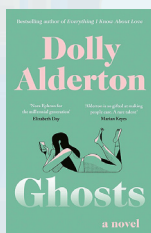
THURSDAY

**TEEN VIRTUAL CRAFT: POLYMER CLAY PENGUIN**  
7PM VIRTUAL (ZOOM)

Make your own adorable penguin with polymer clay. Pick up a craft kit at the Connection Desk beginning Friday, January 21, then join us virtually on Thursday, January 27 to follow along and make your own penguin.



## Staff Favorite Books of 2021



**Ghosts** by Dolly Alderton

A smart and wry look at single life in one's 30s, and a poignant account of caring for a cognitively impaired parent.

Call #: F ALD

Recommended by Stephanie, Circulation Services



**The Last Thing He Told Me** by Laura Dave

Page turner with plot twists and family drama.

Call #: F DAV

Recommended by Beth, Administration



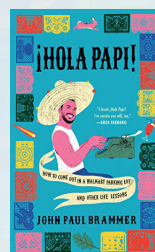
**My Heart is a Chainsaw**

by Stephen Graham Jones

Are you in a horror film or just daydreaming? Literary horror at its finest in this love letter to slasher films.

Call #: F JON

Recommended by Laura, Tech Services



**¡Hola Papi! How to Come Out in a Walmart Parking Lot and Other Life Lessons** by John Paul Brammer

This memoir of essays is as hilarious and witty as it is searching and truthful.

Call #: 814.6 BRA

Recommended by Karalyn, Adult Services

**Are You a Cheeseburger?** by Monica Arnaldo



A story reminding us that we may not always end up where we originally intended to be, but that isn't necessarily a bad thing.

And also, that cheeseburgers are delicious.

Call #: E Stories Funny ARN

Recommended by Will, Youth Services

Registration is required.  
Register through the Calendar at [lislelibrary.org](http://lislelibrary.org) or by calling 630-971-1675

## Adults



**DEC 7**  
TUESDAY

### FRANK SINATRA: THE LEGACY OF OL' BLUE EYES 7PM VIRTUAL (ZOOM)

Film Historian Dr. Annette Bochenek will present a tribute to Frank Sinatra, including a discussion about his New Jersey roots, his ties to Chicago, an overview of his career, and his legacy today. The multimedia presentation will consist of photos, video clips, and captivating stories.



**DEC 11**  
SATURDAY

### WHY THE ATTACK ON PEARL HARBOR? 2PM VIRTUAL (ZOOM)

On December 7, 1941, the Japanese military attacked U.S. possessions in Hawaii and the Philippines, most famously the naval forces stationed at Pearl Harbor. College of DuPage History Professor Mitrani will explore why a smaller country with less military potential attempted to start a war with the U.S.



**DEC 14**  
TUESDAY

### SENIOR HOUSING 101 7PM VIRTUAL (ZOOM)

Rick Graffagna of Senior Solutions will provide an informative presentation on senior housing, including how to find senior properties, methods of funding, and the types of housing available. Great for adult children and seniors.



**JAN 11**  
TUESDAY

### HOPE FAIR HOUSING 7PM VIRTUAL (ZOOM)

HOPE Fair Housing Center will join us for an informative presentation on housing law, housing discrimination, and the eviction moratorium.



**JAN 22**  
SATURDAY

### START THE NEW YEAR WITH MEDITATION 2PM VIRTUAL (ZOOM)

Join Daya Sharma, meditation practitioner of 15 years, for this powerful workshop. Bring joy, peace, positivity, and relaxation into your daily life and begin the New Year with a fresh start.



**JAN 25**  
TUESDAY

### TAXES ARE EVERYONE'S BUSINESS 6:30PM VIRTUAL (ZOOM)

Judi Strauss, of Strauss Tax Service and a veteran of the industry for 35 years, will offer guidance and clarity for the new tax year.

## LLD Kindness Cards

Put a smile on the face of a hospitalized child, veteran, or senior with a message of kindness. We have a table set up in both Adult and Youth Services filled with blank cards, markers, and stickers to create handmade cards. This simple act of kindness is an instant volunteer opportunity perfect for all ages. The LLD will deliver all cards to Cardz for Kidz, a Chicago-based nonprofit.



## LITERACY

Literacy classes are for all skill levels. For more information, please contact Literacy Librarian Jean Demas, [literacy@lislelibrary.org](mailto:literacy@lislelibrary.org) or 630-971-1675 x1002.

### ESL for You!

**SATURDAYS 10AM DEC 4 & 18 JAN 29**

**MEETING ROOM A (LIMITED TO 18 PEOPLE)**

Receive help with speaking, reading, writing, or communicating in English. No registration or fees.

### English Conversation Group

**SATURDAYS 10AM DEC 11 JAN 8 & 22**

**MEETING ROOM A (LIMITED TO 18 PEOPLE)**

Some conversation skills are required to engage in lively discussion while learning new vocabulary words and phrases. Led by Literacy DuPage tutors.

Registration is required.  
Register through the Calendar at [lislelibrary.org](https://lislelibrary.org) or by calling 630-971-1675

## TECHNOLOGY CLASSES



### RESEARCH PRODUCTS & SERVICES BEFORE YOU BUY!

Access Consumer Reports and Chicago Consumers' Checkbook for ratings, reviews, and buying advice for hundreds of products and services.

SATURDAY, DEC. 4

11AM | VIRTUAL (ZOOM)



### STUDY FOR EXAMS USING ONLINE TEST PREP

Join us for an overview of Learning Express Library: an online resource that offers subject tutorials and multiple practice tests for the ACT, SAT, GED, ASVAB, and more.

WEDNESDAY, DEC. 8

2PM | VIRTUAL (ZOOM)



### WATCH MOVIES & VIDEOS WITH HOOPLA & KANOPY

Lisle Library provides access to movies and educational videos through hoopla and Kanopy. Join us for an overview!

SATURDAY, JAN. 8

10AM | VIRTUAL (ZOOM)



### LINKEDIN LEARNING 101

LinkedIn Learning (formerly Lynda.com), is a leading online learning resource with thousands of courses on business, software, and creativity, taught by industry experts.

TUESDAY, JAN. 11

10AM | VIRTUAL (ZOOM)

**CR** Consumer Reports™

Consumer Reports will make holiday shopping easier with ratings, reviews, recommendations, and buying advice for thousands of products.

All with your LLD card!  
Go to the Database tab at [lislelibrary.org](https://lislelibrary.org) for more information.

## BOOK GROUPS

The LLD's book groups are currently exploring hybrid options of meeting in person and hosting virtual discussions. See the events calendar for details.

### BOOKED FOR THE DAY

**ALL SYSTEMS RED**  
BY MARTHA WELLS

DEC 6  
MON 11AM

**DJINN PATROL ON THE PURPLE LINE**  
BY DEEPA ANAPPARA

JAN 10  
MON 11AM



### FIXED ON FICTION

**INTERIOR CHINATOWN**  
BY CHARLES YU

DEC 9  
THURS 7PM

**LOVE AFTER LOVE**  
BY INGRID PERSAUD

JAN 13  
THURS 7PM



### JUST THE FACTS NONFICTION

**ALL CREATURES GREAT AND SMALL**  
BY JAMES HERRIOT

DEC 15  
WED 7PM

**LIVING TO TELL THE TALE**  
BY GABRIEL GARCÍA MÁRQUEZ

JAN 19  
WED 7PM



### MURDER AMONG FRIENDS

**MAGPIE MURDERS**  
BY ANTHONY HOROWITZ

DEC 16  
THURS 7PM

**THE CROSSING PLACES\***  
BY ELLY GRIFFITHS

\*AUTHOR WILL JOIN THE DISCUSSION VIRTUALLY

JAN 20  
THURS 6PM



### SCIENCE FICTION / FANTASY

**THE LEFT-HANDED BOOKSELLERS OF LONDON**  
BY GARTH NIX

DEC 29  
WED 7PM

**ATTACK SURFACE**  
BY CORY DOCTOROW

JAN 26  
WED 7PM

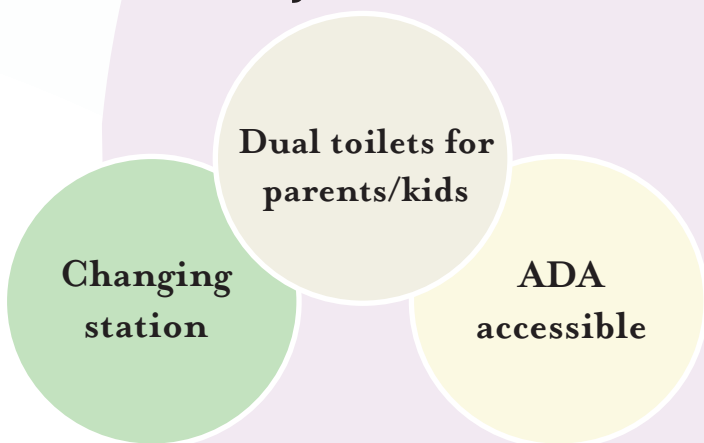


# LISLE LIBRARY DISTRICT RENOVATION UPDATE

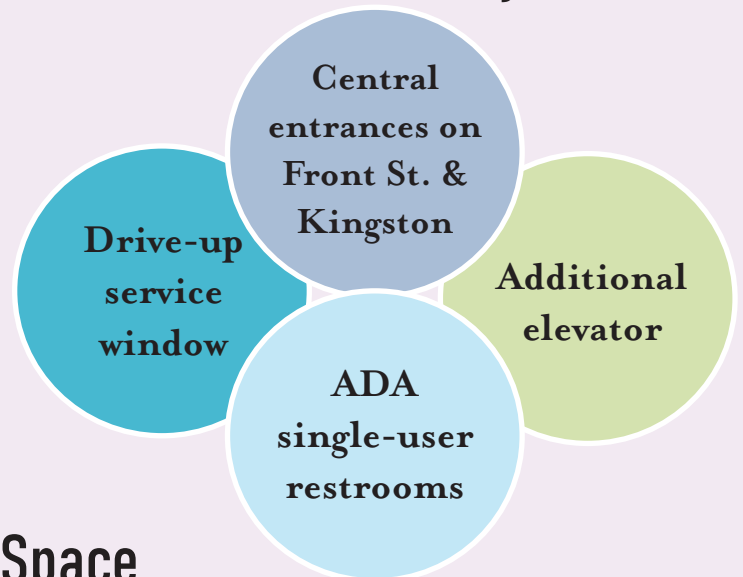
The last *Connections Newsletter* outlined several project inclusions such as installing family restrooms, rightsizing the Youth Services Department, creating a Teen space, improving accessibility for all users, adding more study rooms, installing a drive-up service window, creating an outdoor reading space, and improving the IT infrastructure throughout the facility.

*More specifics regarding enhancements:*

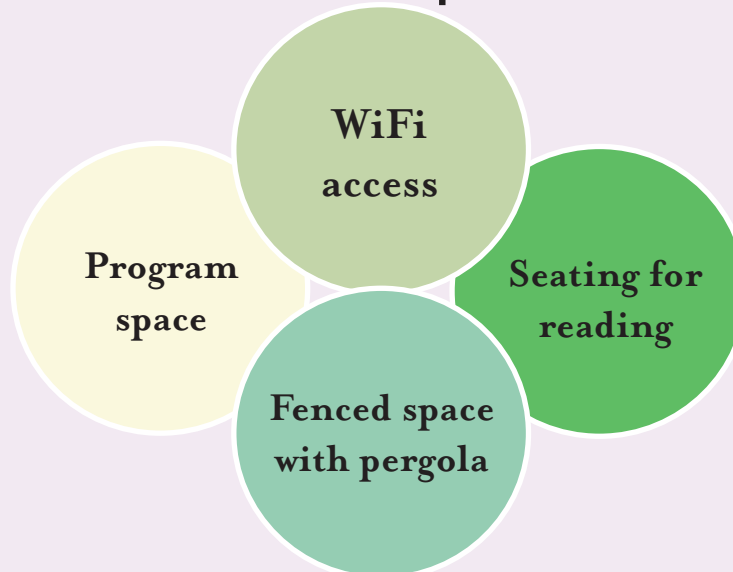
## Family Restrooms



## Accessibility



## Outdoor Space







## LISLE LIBRARY DISTRICT

777 Front Street  
Lisle IL 60532-2287

**DECEMBER 2021 -JANUARY 2022**

NON-PROFIT  
ORG.  
US POSTAGE  
**PAID**  
PERMIT #126  
ELGIN, IL

Follow us on:



Facebook



YouTube



Instagram



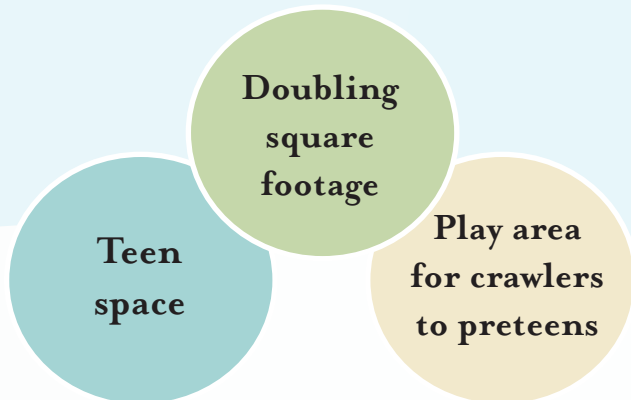
Twitter

ECRWSS

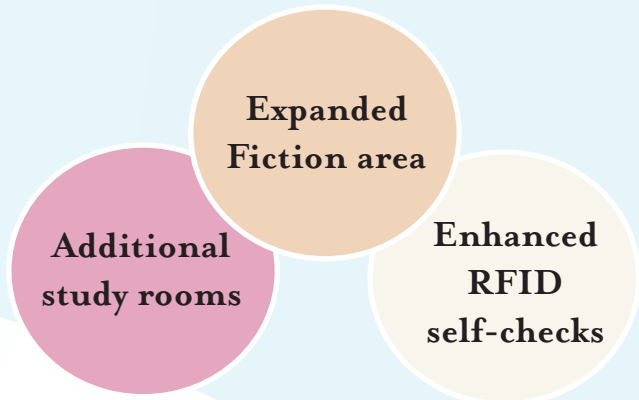
Lisle Library Patron Local

Lisle IL 60532

### Youth Services



### Adult Services



### Renovation FAQ's

#### ***When will construction begin?***

We estimate construction to begin in early spring of 2022. Just around the corner, after the holidays!

#### ***Will the Library remain open during construction?***

Yes. The renovation will happen in two phases. One half of the Library will be under construction while the other half is open for patron use. However, there may be a couple of days where the Library will have to be closed due to transitioning from one area of construction to another.

#### ***Will all materials be available while the Library is under construction?***

Unfortunately, no. Some materials will have to be put into storage. However, the LLD will ensure that popular and core items are available for check-out throughout the construction period (all formats). Remember, digital content is available 24/7!

#### ***During construction, will you have programs such as Storytime, crafting, or book groups?***

Staff will provide a variety of virtual and 'pickup' programs throughout the construction period. We will also offer outdoor programming (weather permitting) whenever possible.

#### ***When will the renovation be complete?***

We estimate the renovation to take 10-12 months from the start of construction. We are so excited to bring you and your family a more functional, accessible, and convenient public library!

