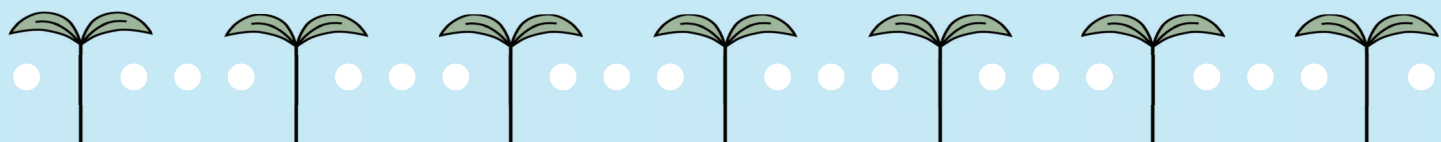




Annual Report 2021 - 2022



Board of Trustees

Marjorie Bartelli *President*
Emily Swistak *Vice President*
Jenny Norton *Treasurer*
Karen Larson *Secretary*
Lorna Turner *Trustee*
Liz Sullivan *Trustee*
Sara Wynn *Trustee*

LLD Team of Directors

Tatiana Weinstein *Library Director*
Beth McQuillan *Assistant Director*
Paul Hurt *Circulation Services Director*
Will Savage *Youth Services Director*
Elizabeth Hopkins *Adult Services Director*
Laura Murff *Technical Services Director*

DIRECTOR'S NOTE



Fiscal year 2021-22 was consumed with exciting renovation planning and activities. However, the LLD also accomplished a number of other remarkable feats such as conducting the first large-scale, library-wide, program after the brunt of the pandemic – the first LLD Fall Fest. The LLD hosted over 600 patrons in the Library parking lot that day.

As you'll see in this report, program attendance and database use increased, more Library cards were issued, and more residents took part in the Museum Adventure Pass program as compared to the prior year. The LLD also partnered with a number of organizations in and around Lisle such as the Lisle Township, DuPage Monarch Project, and State Senator Laura Ellman's Office.

COVID-19 posed a lot of challenges for the LLD in FY 21/22. However, the pandemic did not keep the LLD from connecting with our residents – digitally or in-person. The LLD increased digital offerings on all platforms and continued curbside pick-up service. We ensured that the Library was equipped with PPE and

sanitized high-traffic areas of the facility. Keeping our patrons and staff safe last year was important and remains a key practice as we forge ahead with a newly renovated facility.

The LLD can't wait to unveil a more functional, accessible, and convenient public Library for our community in 2023!

Tatiana Weinstein, LLD Director

LEADERSHIP



Beth McQuillan (LLD Assistant Director), Karen Larson (Board Secretary), Jenny Norton (Board Treasurer), Emily Swistak (Board Vice President), Tatiana Weinstein (LLD Director), Liz Sullivan (Board Trustee), Sara Wynn (Board Trustee), Marjorie Bartelli (Board President), and Lorna Turner (Board Trustee)

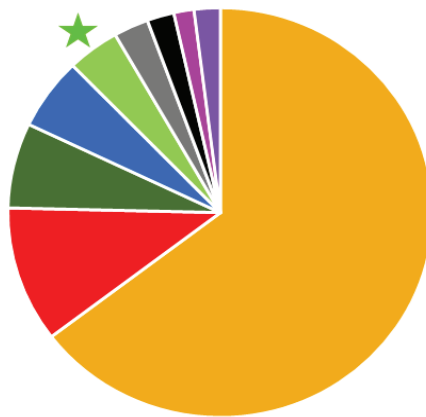
FINANCIAL PAGE

- The Lisle Library District (LLD) is a public library serving 30,281 residents in the District covering the Village of Lisle and parts of unincorporated Lisle and Naperville. The LLD is responsible for all Library operations: materials, services, staff, and maintenance.
- The LLD fiscal year runs July 1–June 30.
- The LLD received property tax (including deferred property tax), TIF, and replacement taxes of \$4,107,856.
- LLD fund balances at the end of the year:
 - General/Corporate - \$3,208,588
 - Special Reserve - \$4,904,786
 - IMRF/FICA - \$316,989
- Grants:
 - Illinois Public Library Per Capita Grant \$42,043.40 awarded August 2021
 - DuPage Foundation's JCS Arts, Health & Education Fund Visual Arts and Music Mini-Grant \$2,500 awarded for LiteZilla March 2022
- Fundraising efforts:
 - The LLD reached its fundraising goal for a LiteZilla installation.
Goal: \$15,000 Outcome: \$17,000, which allowed the LLD to acquire accessories, a donor plaque, and LiteZilla Mini.

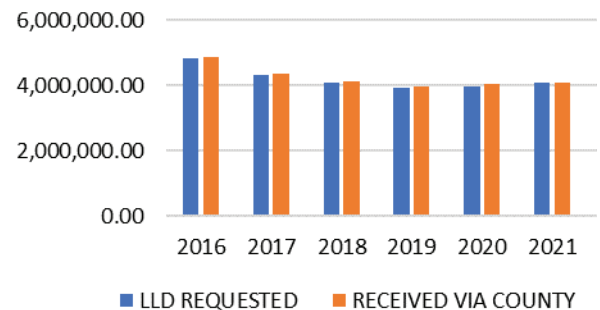
Additional financial information, including the annual audit, is available on the Library's website: lislelibrary.org/about-us.

LLD PORTION OF TAX BILL

- Lisle School Dist. 202 65%
- Lisle Woodridge Fire Dist 11%
- Lisle Park Dist. 6.5%
- Village of Lisle 5.5%
- **Lisle Library District 4%**
- College of DuPage 2.5%
- County of DuPage 2%
- Forest Preserve Dist. 1.5%
- Lisle Township Services 2%

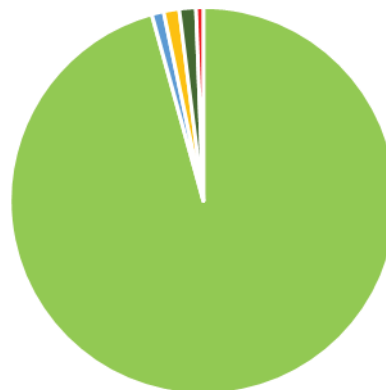


PROPERTY TAX LEVY

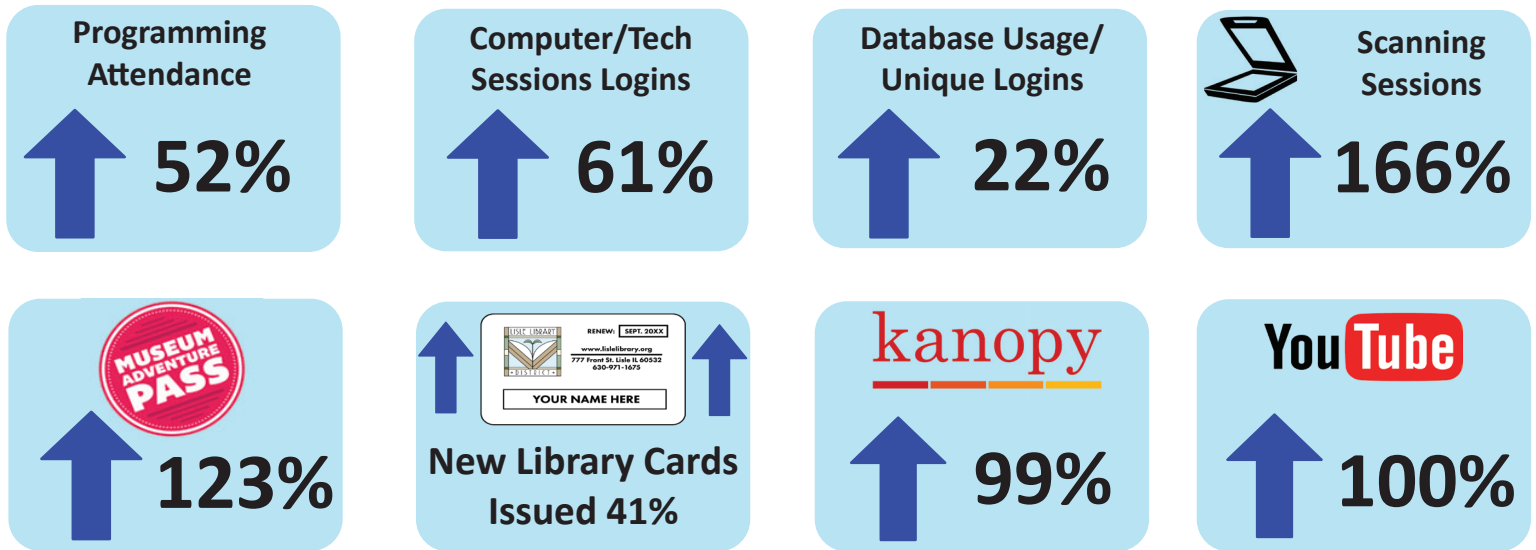


LLD FUNDING SOURCES

- Property Taxes 95.7%
- Grants 1%
- Replacement Taxes 1.3%
- Miscellaneous 1.4%
- Charges .6%



STATISTICS:



NEW SERVICES AND PROGRAMS:

- Fall Fest - Our first fall fest was attended by 650 people who enjoyed churros, a petting zoo, and crafts!
- Tonieboxes and Vox Books - Storytime has been transformed by circulating devices that provide screen-free, at-home story experiences.
- New streaming channels added to Roku - Rokus now offer HBO Max and Apple TV for more viewing pleasure.
- Explore More Illinois - Discover 44 state-wide attractions with this discount offering.
- Youth Services Book Bags - Curated picture and chapter book bags filled with a surprise book and goodies!
- Expanded Gale References eBooks - More titles were added to Gale Reference eBooks expanding research opportunities.
- New Discussion Group: Food for Thought - Home chefs gather bimonthly for a culinary conversation. A great addition to LLD's 5 other discussion groups.
- Youth Services Scavenger Hunt - Young patrons scoured the YS department looking for fictional characters.
- Added the newspaper, *Lisle Eagle*, to the IL Digital Archive.



Fall Fest



Tonieboxes

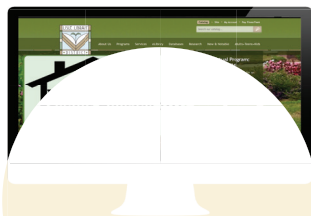


Explore More Illinois

PATRON ENGAGEMENT:



**New Library
Cards Issued:
1,408**



**LLD Website
Visitors: 82,819**



**Summer Read
Participants:
1,389**

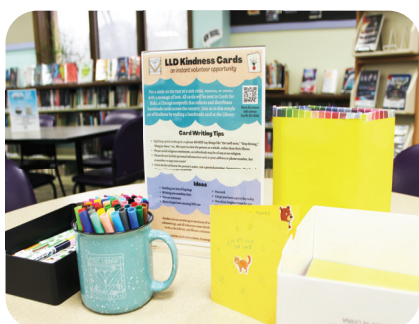


**Winter Read
Participants:
902**

COMMUNITY CONNECTIONS:



Keep It Personal Drive



LLD Kindness Cards



Lisle 4th of July Parade

- State Senator Laura Ellman - In February, Senator Ellman's office hosted an information table in the LLD lobby and then in October held a LovePurse drive to provide survivors of domestic abuse with purses filled with women's hygiene items.
- Lisle Township Food Pantry Drive - The LLD held a Keep it Personal Drive with the Lisle Township Food Pantry to collect personal hygiene products for residents in need.
- Cardz for Kidz - The LLD provided an instant volunteer opportunity for all ages to create cards for hospitalized children, seniors, and Veterans.
- Lisle Depot Days - Staff stationed a booth at Depot Days to sign people up for Library cards and check out materials.
- DuPage Monarch Project - The LLD became a supporting member of the DuPage Monarch project and collaborated on the DuPage BioBlitz, which encouraged patrons to become citizen scientists by tracking local flora and fauna.
- Lisle Woman's Club Scarf Drive for Veterans - The LLD served as a drop-off site for the Lisle Woman's Club to collect scarves for veterans.
- Lisle 4th of July Parade - LLD staff and Board of Trustees walked in the annual Lisle 4th of July Parade.

LLD RENOVATION



In FY 21/22, the LLD Board of Trustees held a ceremonial groundbreaking for construction. President Bartelli commended the Board, *past and present*, thanked the LLD staff for their deep dedication to the Library, and expressed gratitude for the renovation project teams: CCS International, Sheehan, Nagle, Hartray Architects, and Camosy Construction.

The groundbreaking marked an important day in LLD history. The Library has embarked on this major renovation after many years of thoughtful discussion and planning.

From community engagement, to focus groups, to strategic planning, to facility assessments, to hiring qualified professionals to guide the LLD through the renovation process, the Library has taken responsive and measured steps over the last five years to bring this vision to fruition.

In FY 21/22 the renovation has included construction work in the following categories:

- Demolition
- Temporary wall installation
- Framing
- Electrical
- HVAC
- Trenching
- Plumbing
- Cabling
- Fire protection services



A YEAR IN PHOTOS



Lisle 4th of July Parade



Lisle 4th of July Parade



Storytime



LLD Kindness Cards



Summer Read Sign Up

A YEAR IN PHOTOS



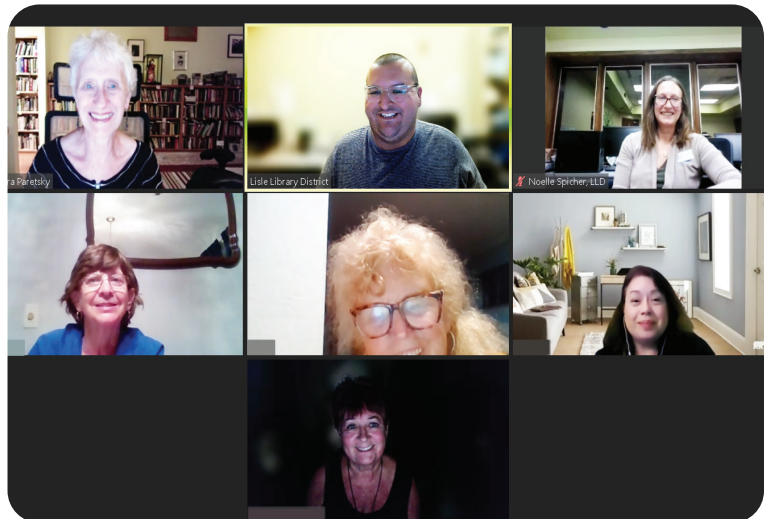
Arnie The Doughnut & Mr. John's Storytime



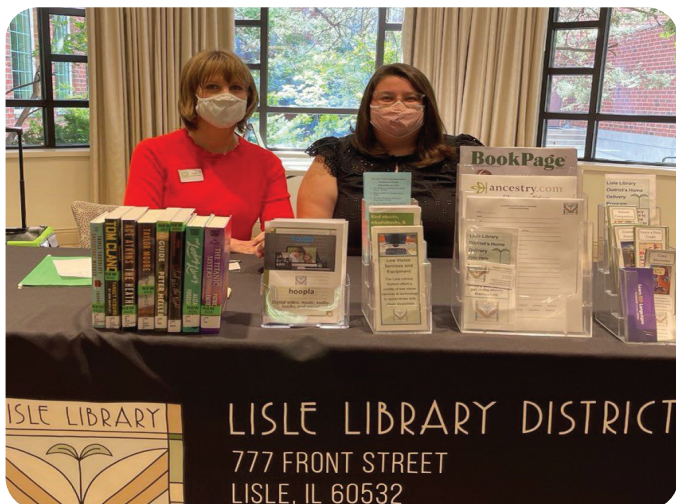
Early Library Memories Video Series



DuPage County Health Department Care Van



Murder Among Friends Book Discussion



Angela & Karalyn's Villa St. Benedict Visit



Fall Fest

ENRICH • EDUCATE • EMPOWER



777 Front Street
Lisle, IL 60532

lislelibrary.org
(630) 971-1675