

From the community: Lisle Library's 6th Annual "Warm Hearts Give Warm Hands" Winter Clothing Drive



Community Contributor Alexa Hansen
February 4, 2016

Lisle, Illinois - Lisle Library is hosting its 6th annual "Warm Hearts Give Warm Hands" winter clothing drive for the entire month of February.

The Lisle Library is collecting gently used mittens, hats, and scarves. The donations will be directly given to the People's Resource Center of DuPage County, an organization focused on providing nearly 32,000 low-income DuPage residents with basic human services such as food, clothing, shelter, and resources.

You are welcome to place donation items in the special container located in the lobby anytime during regular Library hours.

From the community: Lisle Library District Awarded for Literacy Outreach Efforts



Community Contributor Alexa Hansen
February 10, 2016

On February 8, 2016, Lisle Library District Director Kathy Seelig and Literacy Outreach Librarian Jean Demas accepted the "Naperville School District 203 Exemplary Business Partnership Award".

The award praises the Lisle Library District's promotion of family literacy throughout the community.

The Lisle Library District partners with the Ann Reid Early Childhood Center and Literacy DuPage to provide English as a second language resources and classes to help parents teach their children.

Chicago Tribune

From the community: BookFace Friday

Community Contributor Alexa Hansen

February 26, 2016

Lisle Library District's BookFace Friday includes a movie from the collection and a cute pup!



From the community: Friends of the Library Presents
Kitty Donohoe



Community Contributor Alexa Hansen
March 8, 2016

Based in Ann Arbor, Michigan, Emmy recipient Kitty Donohoe draws from her Irish Heritage as well as her American roots. Her music is rich, earthly and compelling, making good use of her gifts for storytelling, her love of language, and her ear for melody. Concert starts at 2 p.m. on Sunday, March 13th at the Lisle Library District.

Lisle Library District: Poetry Reading Inspired by Collage Art Night

Submitted by Alexa Hansen on Tue, 03/29/2016 - 11:39am

April is National Poetry Month, and the Library's Gallery 777 is celebrating by featuring a collaboration of poetry readings inspired by collage art.

The **Midwest Collage Society**, a local group dedicated to promoting collage as a fine art, will exhibit their work in Gallery 777 starting in March. Once on display, the poets of the **Illinois State Poetry Society** will choose one piece each and have one month to create a poem for that collage.

For Tatiana Weinstein, Assistant Library Director, this pairing was a natural fit for Gallery 777.

"Collage is a unique and powerful art form. Pairing collage with poetry is a dynamic way to share arts both visually and verbally. We're very excited for Gallery 777's first ever poetry reading and art opening collaboration and hope to make this an annual event!"

The event takes place in the Library's atrium on Friday, April 8 from 6 to 8 p.m. The poetry readings will begin at 6 p.m. and light refreshments will be served.



Chicago Tribune NAPERVILLE SUN

From the community: Lisle Library District's Gallery 777 Presents Collage Art and Poetry Reading



Community Contributor Alexa Hansen
April 1, 2016

April is National Poetry Month, and the Library's Gallery 777 is celebrating by featuring a collaboration of poetry readings inspired by collage art.

The Midwest Collage Society, a local group dedicated to promoting collage as a fine art, will exhibit their work in Gallery 777 starting in March. Once on display, the poets of the Illinois State Poetry Society will choose one piece each and have one month to create a poem for that collage.

For Tatiana Weinstein, Assistant Library Director, this pairing was a natural fit for Gallery 777. "Collage is a unique and powerful art form. Pairing collage with poetry is a dynamic way to share arts both visually and verbally. We're very excited for Gallery 777's first ever poetry reading and art opening collaboration and hope to make this an annual event!"

The event takes place in the Library's atrium on Friday, April 8 from 6 to 8 p.m. The poetry readings will begin at 6 p.m. and light refreshments will be served.

naperville

your city. your magazine.
April 2016

naperville

APRIL 2016



2016 WEDDING TRENDS

MODERN FLAIR

SOPHISTICATED
LOOKS THAT WILL
ELEVATE YOUR STYLE

Lisle Library District Director **Kathy Seelig** and Literacy Outreach Librarian **Jean Demas** accepted the Naperville School District 203 Exemplary Business Partnership Award in February. The award praises the Lisle Library District's promotion of family literacy throughout the community. The Lisle Library District partners with the Ann Reid Early Childhood Center and Literacy DuPage to provide English as a second language resources and classes to help parents teach their children.

From the community: Lisle Library District Celebrates National Library Week: Libraries Transform



Community Contributor Alexa Hansen
April 8, 2016

National Library Week: Libraries Transform is being celebrated all week long from April 10th through the 16th.

National Library Week is sponsored by the American Library Association (ALA) and its goal is to celebrate the contributions of our nation's libraries and librarians and to promote library use and support.

There are a variety of great activities for the week to celebrate at the Lisle Library District. Join us for Storytime with Elephant and Piggie, Monday April 11th from 10:15 - 11:30 a.m., for stories, songs, and pictures with two of your favorite characters! This is a great program for children ages 2 to 6.

The Library is hosting a contest called Book in a Jar all week long. There are four jars throughout the Library with a different book shredded inside them. Correctly guess the title of the book in the jar and you could be one of the lucky prize winners!

Have you ever read a book that transformed your life? The staff at Lisle Library has! Check out our YouTube channel for video interviews with staff and librarians about what book transformed their lives.
www.lislelibrary.org

From the community: Author Hank Phillippi Ryan to Visit Lisle Library District Book Discussion Group



Community Contributor Alexa Hansen
April 12, 2016

Celebrated author and investigative reporter, Hank Phillippi Ryan will be visiting the Lisle Library District's Murder Among Friends mystery group's discussion of her newest novel, *What You See*. Book discussion begins at 7 p.m. on April 14th, with the author joining the discussion at 7:30 p.m. There is no registration required and all are welcome to attend.

Hank Phillippi Ryan has a myriad of awards for her crime fiction, including five Agathas, two Anthonys, the Daphne, two Macavitys, and the prestigious Mary Higgins Clark award. To view more of her work and achievements go to <http://hankphillippiryan.com/>.

SuburbanLife

April 13, 2016

Author Hank Phillippi Ryan will discuss her newest novel, "What You See," with members of Lisle Library District's Murder Among Friends mystery group April 14.

Photo provided
by Chitose Suzuki



Mystery author to visit Lisle Library

SUBURBAN LIFE MEDIA

LISLE – Celebrated author and investigative reporter Hank Phillippi Ryan will visit the Lisle Library District's Murder Among Friends mystery group's discussion of her newest novel, "What You See."

Book discussion will begin at 7 p.m. April 14, with the author joining the discussion at 7:30 p.m. There is no registration required and all are welcome to attend.

Ryan has received myriad awards for her crime fiction, including five Agathas, two Anthonys, the Daphne, two Macavity honors, and the prestigious Mary Higgins Clark award. To

If you go

- **WHAT:** Lisle Library District's Murder Among Friends mystery group discussion featuring author Hank Phillippi Ryan
- **WHEN:** 7 p.m. April 14
- **WHERE:** Lisle Library District meeting room B
- **INFO:** www.lislelibrary.org or

view more of her work and achievements, go to hankphillipiryan.com.

For more information, visit www.lislelibrary.org.

From the community: Friends of the Lisle Library District Presents “Scenic Norway Presented by Bill Helmuth”



Community Contributor Alexa Hansen
April 19, 2016

On Thursday, April 21st at 7 p.m., Friends of the Library presents "Scenic Norway Presented by Bill Helmuth".

World traveler Bill Helmuth has set foot on over 100 countries and lived on four continents. Friends of the Library is honored to have this storyteller present his travelogue of scenic Norway. Come discover one of the richest countries in the world, explore the Viking Age in modern day, and marvel at its breathtaking views.

From the community: Friends of the Library Spring Book Sale



Community Contributor Alexa Hansen
April 25, 2016

Don't miss the Spring Used Book Sale at the Lisle Library District!

Thursday, April 28th is exclusively for members of the "Friends of the Lisle Library" group, but non-members can join for only \$2 at the door. There's no admission at the door on Friday and Saturday. Come early and grab your favorites!

Chicago Tribune NAPERVILLE SUN

From the community: Lisle Library District's Comic Book Giveaway Day



Community Contributor Alexa Hansen
May 3, 2016

The Lisle Library District is celebrating the world of comics! To encourage new readers, the Library is giving away one comic to anyone who stops by the Connection Desk on Saturday, May 7 from 9:30 a.m. to 5 p.m.

Those who stop by are also eligible to win one of four Dorbz! Thanks to Graham Crackers Comics for helping us with this promotion.

From the community: Lisle Library District's "Food for Furry Friends" Food Drive



Community Contributor Alexa Hansen
May 9, 2016

Throughout the entire month of May, the Lisle Library District will be collecting donations for its "Food for Furry Friends" good drive for A.D.O.P.T. (Animals Deserving of Proper Treatment) in Naperville, a no-kill animal shelter that helps find homes for homeless animals.

The Library will be collecting pet food donations, squeaky toys, collars, leashes, and kitty litter until May 31st. You can bring your donations in during regular Library hours and place the items in the special container in the lobby.

From the community: Lisle Library District's #Selfie with a Librarian Day



Community Contributor Alexa Hansen
May 16, 2016

Love taking selfies? Love the Lisle Library District? Well our staff love seeing your faces at the library and we love selfies too!

On Wednesday, May 18, patrons are encouraged to take selfies with the library staff wearing an Instagram pin. Patrons can post the picture to their Instagram and tag @lislelibrary, as well as use the hashtag #SelfieWithaLibrarian!

Every selfie photo gets a surprise treat!

From the community: Lisle Library District's Gallery 777 Presents "My Feelings on Canvases"



Community Contributor Alexa Hansen
May 18, 2016

Lisle Library District's Gallery 777 is proud to present local artist Doina Iacob's "My Feelings on Canvases".

These amazing pieces, featuring acrylics on canvas, are emotional connections to nature, and some of them to human nature.

Her work will be displayed in Gallery 777 throughout May and June. Come check out these beautiful pieces of art.

From the community: Lisle Library District's Chinese Arts/Culture & Calligraphy Presentation



Community Contributor Alexa Hansen
May 23, 2016

Join Lisle teacher, Sophie Wang, in a historical journey at the Lisle Library District on Saturday, May 28th at 1 p.m.

Wang will walk the audience through five thousand years of Chinese arts and culture and present a Chinese calligraphy demonstration. Attendees are welcome to try their hand at calligraphy as well!

Materials will be provided and registration is required. www.lislelibrary.org

Chicago Tribune **NAPERVILLE** SUN

From the community: Lisle Library District Summer Read 2016: Read for the Win!



Community Contributor Alexa Hansen
May 31, 2016

Lisle Library District's Summer Read Program, inspired by this year's Olympics, will have you flexing those reading muscles as you Read for the Win!

The Library's kick-off party begins at 11a.m. on Saturday, June 4th.

Enjoy Jamba Juice refreshments, listen to live music from Tumbleweed, and don't miss a special performance at 1 p.m. from the Jesse White Tumblers!

Staff will be available during the celebration to register you for the Kid, Teen, or Adult reading program. Festivities include food, fun, and so much more!

From the community: Lisle Library District Graduates Literacy DuPage Tutors

Community Contributor Alexa Hansen

June 6, 2016

Volunteer tutors from Literacy DuPage recently completed an 18 hour tutor training session at the Lisle Library with 15 new tutors graduating and matched to help adult literacy/English Language Development learners

improve their speaking, reading and communication skills.

Congratulating the new tutors were Jean Demas, Literacy Outreach Librarian/Literacy DuPage board president, John Drake, Literacy DuPage board member and Karen Fuerst, tutor trainer.

The Lisle Library District, through their Literacy/English Language Development (ELD) service, works in partnership with local schools and community agencies to provide individual family, community and workplace literacy services to Adult Basic Education (ABE) and English as a Second Language (ESL) learners throughout the

county. The Lisle Library is the founder of Libraries English and Reading Network (LEARN), a network of libraries and literacy providers.

For more information about literacy classes and programs, visit <http://www.lislelibrary.org/services/literacyenglish-language-development-eld>



Chicago Tribune

From the community: Jesse White Tumblers Perform at Lisle Library District

Community Contributor Alexa Hansen

June 6, 2016



To kick off the Lisle Library District's Summer Read Program, the Jesse White Tumblers stopped by for an amazing performance!

From the community: Lisle Library District Presents Games Not Played: Chicago's Bids 1904 & 2016

Community Contributor Alexa Hansen

June 10, 2016



If former Mayor [Richard M. Daley](#) had his way, the XXXI Olympiad would be happening in Chicago in 2016, not in Rio de Janeiro.

Chicago was actually chosen as the host city for the 1904 games, but politics and circumstances conspired to snatch the prize away to St. Louis.

Historian and author of "Images of America: Route 66 in Chicago", David Clark, looks into what might have been

and what went wrong, and why some believe that Chicago's 2016 failure was a blessing in disguise. Join us on Tuesday, June 14th at 7 p.m. for this fantastic event.

Chicago Tribune

From the community: Lisle Library District's Instagram Takeover Day!

Community Contributor Alexa Hansen

June 17, 2016

INSTAGRAM TAKEOVER

Friday, June 17th



Our Communications Coordinator Alexa takes over the Lisle Library District's Instagram for the day!

Follow her day to see a behind-the-scenes look at the library!



@lislelibrary | #LLDTakeover | lislelibrary.org

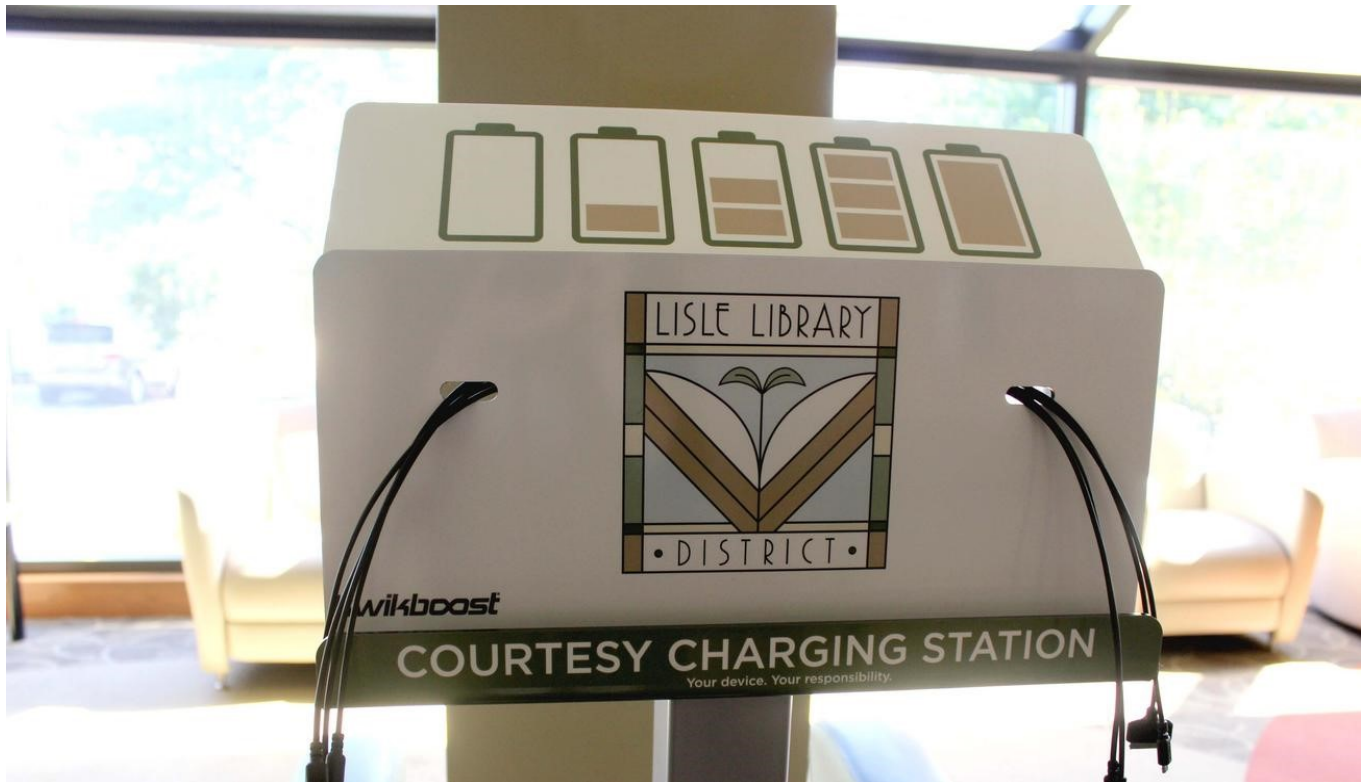
Ever wonder what happens behind the scenes at the Lisle Library District? Check out the library's first ever Instagram Takeover Day at <https://www.instagram.com/lislelibrary/>.

Chicago Tribune

From the community: Charging Stations at Lisle Library District

Community Contributor Alexa Hansen

June 21, 2016



The Lisle Library District now has two charging stations with various cords to charge your phone and tablet devices.

From the community: Lisle Library District's "Creating a Village: The Story of Lisle's Growth and Development"

Community Contributor Alexa Hansen

June 21, 2016



Celebrate our Village's 60th birthday!

On this day in history: June 23, 1956, Lisle residents voted to incorporate as the Village of Lisle. Brian Failing, local historian and former curator of the Museums at Lisle Station Park, will chronicle the history of Lisle from a farming community to Village that maintains its small town feel. He will examine the grassroots movement that led to the incorporation of Lisle and discuss how the Village grew.

Audience members are encouraged to participate in a simulated vote on whether or not they would have voted for incorporation - and to have some birthday cake as well!

Join us and learn about your hometown! You can register here at <http://bit.ly/28LxzR8>.

From the community: Former Lisle Library District Trustee Receives College of DuPage Woman of Distinction Award

Community Contributor Alexa Hansen
June 28, 2016



Former trustee of the Lisle Library District, Mary Ellen Durbin, received the College of DuPage Woman of Distinction Award this past spring.

This award, named after the former College of DuPage History professor Adade Wheeler, is given to a person who has made significant contribution to the personal and professional advancement of women through education, advocacy, and motivation.

For the past 30 years, Mary Ellen has worked with and on behalf of people living in poverty in the suburbs of Chicago. She began her career at Catholic Charities, before moving over to People's Resource Center while also volunteering with homeless families through DAYBREAK of Lisle, a program her and her husband helped to found in 1989.

Throughout her work at these various organizations, Mary Ellen hopes "more than anything else is that people remember that someone was kind to them. That they were treated as a brother or a sister. That someone cared about them when they were struggling."

Mary Ellen noticed that over the years, isolation and aloneness, and being the other, is often the worst difficulty a person can endure. "To be able to be at the point of another person's need has been the great privilege of my life, to join others in their tough journey," said Mary Ellen. "The greatest learning for me is the truth that America, and Americans, are always better when we are making room for others."

From the community: Lisle Library District's 1st Chess Tournament

Community Contributor Alexa Hansen
July 19, 2016



Join the Lisle Library District as we host our 1st chess tournament! Participate in this non-USCF, Swiss-style, timed, all-ages tournament as you vie for 1st, 2nd, and 3rd prize! Tournament will be conducted by Gary L. Janssen, of the St. Charles Chess Club. Mr. Janssen has directed tournaments for over 26 years. The tournament is limited to 40 individuals.

You can register at <http://bit.ly/29Ry5Ls>

The Lisle Library District's chess club began in 2014, when a high school student approached one of the librarians about the possibility of starting a club at the Library. With the Library's dedication to continue to meet the needs of patrons and the community, staff immediately were on board with the idea. The library continues to offer Chess Mondays with both teen and adult players of all experience levels.

From the community: Lisle Library District Summer Read Wrap-Up Party

Community Contributor Alexa Hansen
July 25, 2016



Lisle Library District's 2016 "Read for the Win!" is coming to an end.

Join us for an afternoon of fun and prizes at our Summer Read Wrap-Up Party, Saturday July 30 from 11AM to 3PM! Enjoy live music, ice cream, cotton candy, sports challenges, giveaways, and so much more!

12:30-2:30PM: Lisle Community Band Brass Quintet

11AM-3PM: Culver's Ice Cream

11AM-3PM: Ring Toss (win a sports themed DVD!)

11AM-3PM: Soccer Goal Challenge

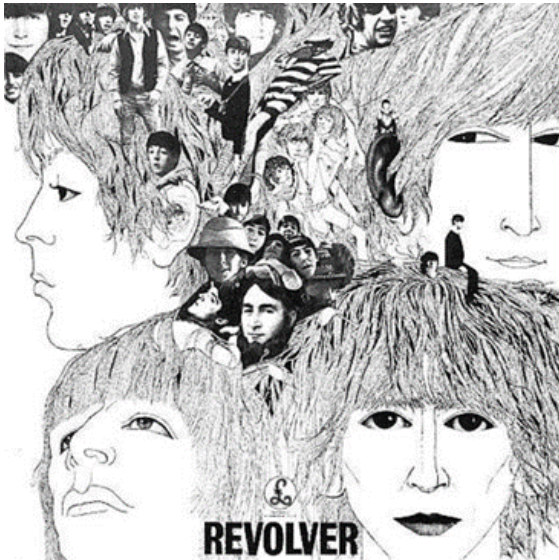
Remember, the last day to log books and earn your prizes for the Summer Read program is Friday, July 29.

Visit <http://lislelibrary.readsquared.com/> to join in on the fun!

From the community: Lisle Library District Hosts Live Podcast Recording

Community Contributor Alexa Hansen

August 2, 2016



On Thursday, August 4 from 7 to 8 p.m., the Lisle Library District will host a live recording of the podcast "Something about the Beatles" with Robert Rodriguez & Richard Buskin. Buskin and Rodriguez will be discussing the 50th anniversary of the Beatles' album Revolver.

Richard Buskin is a New York Times bestselling author and freelance journalist who specializes in pop culture, music, film, and television. A native of London, England, who relocated to America in 1995, he has written 30 non-fiction books, including biographies and autobiographies of The

Beatles, Whitney Houston, Sheryl Crow, Marilyn Monroe, Phyllis Diller, Stefanie Powers, Congresswomen Linda and Loretta Sánchez, and the world's most famous record producers and engineers.

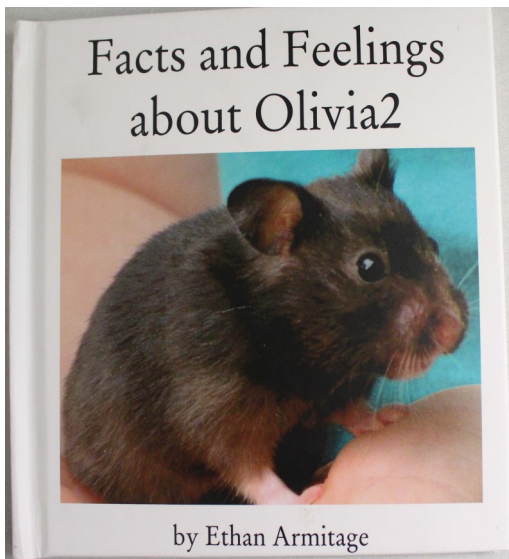
Robert Rodriguez is an Award Winning author; penning or contributing to nearly a dozen books. He's written extensively about The Beatles: five books so far, including the brand new Solo in the 70s and last year's acclaimed Revolver: How The Beatles Reimagined Rock 'N' Roll. He's also contributed numerous articles to Beatlefan magazine, and has been a regular interviewee on radio and TV about the group.

Register for the event here: <http://bit.ly/2aQ8but>

From the community: Lisle Library District's Patron Spotlight: Ethan Armitage

Community Contributor Alexa Hansen

August 8, 2016



From November 2015 until May of this year, Ethan Armitage, 17, a Lisle resident, worked hard to publish his own book.

Olivia2 catalogs the life and habits of his hamster and show the responsibilities he took on to care for his adorable, little pet. To compile the data needed for the book, Ethan, with the help of his father and his tutor Joan Spindler, who have been working together in the Library's Literacy/ELD Room for several years, went

online for information and checked out many books from the Lisle Library on hamsters.

Unfortunately, Olivia2 passed away this past June, but Ethan is looking on the bright side, saying that, "It's nice to have the book I wrote to look back on and remember her."

From the community: Lisle Library District Hosts “Ready, Set, Go!”

Community Contributor Alexa Hansen

August 15, 2016

Ready,
Set,
Go!



Stop by the Library on Saturday, August 20th from 1-3PM for a showcase panel of experts!

We will be hosting a Q&A session along with engagement from:

- Morton Arboretum: Level up your skills on various gardening topics
- DDS Design Services: Pick up tips and tricks from a National Association of Remodeling Industry (NARI) Home Remodeler
- Lisle Township Job Club: Be in the know with how to network for career advancement and job placement
- Dick Pond Athletics: Get your fitness on with information on sports and recreation with emphasis on running
- C2 Educate: Need a tutor or help with test preparation? Talk to one of the education experts
- KinderCare: It's never too early to get a jump start on your child's education

Don't miss the unveiling of the Library's Rokus! Head upstairs to Youth Services for the unveiling of the Playaway Launchpads, do a creative craft, and play the interactive game Word Winder!

Attend for a chance to win some lovely door prizes from the "I Love My Lisle Library Card" participating businesses! Visit lislelibrary.org for more details!

Chicago Tribune

From the community: Lisle Library District at Naperville 203 School District's "Welcome to 203 Community Picnic"

Community Contributor Alexa Hansen
August 30, 2016



Lisle Library District's Literacy Outreach Librarian Jean Demas speaks with attendees at the "Welcome to 203 Community Picnic" about the library's array of Literacy and English Development classes and resources.

From the community: Lisle Library District's 8th Annual "I Love My Lisle Library Card"

Community Contributor Alexa Hansen
August 31, 2016

We're celebrating National Library Card Sign-Up Month in September with our 8th annual "I Love My Lisle Library Card" Business Partnership Program! Enjoy discounts at over 40 local businesses when you show your Lisle Library card from September 1st through the 30. Visit <http://www.lislelibrary.org/i-love-my-lisle-library-card-september> for a complete list of discounts from the participating businesses below.

- Bicycles, Etc.

Children's Creative Corner

- ClaySpace Ceramic Arts Center
- Connect Hearing
- Cosley Zoo
- Costco
- Culver's of Downers Grove
- Dick Pond Athletics, Lisle
- Doctors' Center for Integrative Wellness
- Domino's Pizza
- Evviva Bar & Eatery
- Fabulous Noodles
- Fireplace & Chimney Authority II
- Flowers of Lisle
- Fox Restaurant

- Great Clips
- The Grill Effect
- Grounds for Hope Café - KidStreet
- Hand-N-Paw
- Holistic Health Care Centers, LLC
- Insight Property Service
- Jersey Mike's Subs
- KinderCare Learning Center (Eisenhower Lane)
- KinderCare Learning Center (College Road)
- Kumon of Lisle - Four Lakes
- Leo's Cleaners, Inc.
- Lucky Wok Chinese
- Madeleine, What's for Dinner?
- Modern Music
- Morningside Café
- The Nook
- Oil Depot
- Papa John's Pizza
- Passero's Pizza
- Paul's Shoe Service
- Popeye's Chicken & Biscuits
- Pump It Up, Lisle
- RE/MAX Action Coughlin-Schillo Team
- The Russian Gift Shop
- The Stone Center, Inc.
- Taco Diner
- Villa St. Benedict & Benedale Center for Assisted Living



From the community: Pulitzer Prize Author Elizabeth Strout Talks Literature and Reading at Ashton Place in Willowbrook

Community Contributor Alexa Hansen
September 15, 2016

Eleven area libraries have partnered together to host Pulitzer Prize winning author Elizabeth Strout Saturday, September 24 from 10:00 am to 12:00 pm at Ashton Place in Willowbrook, Illinois.

Elizabeth Strout, author of *Olive Kitteridge* and *The Burgess Boys*, talks literature, reading and her recent book during a moderated discussion by Rebecca Vnuk. Strout will also take questions from the audience. A book signing will follow the discussion. Free tickets to the event are available at <http://oneauthor.eventbrite.com>.

The idea of this partnership began at a meeting of library directors, where several directors suggested combining efforts and resources to bring author programming to their communities. A planning committee was then formed to discuss the logistics and decide on an author to invite.

The committee chose Elizabeth Strout because of the high quality and popularity of her books among the greater community. The idea behind *One Author, One Community* was a celebration of literary excellence and Ms. Strout was a perfect choice for the event.

Strout won the 2009 Pulitzer Prize for fiction with her short story collection, *Olive Kitteridge*, which was also a finalist for the National Book Critics Circle Award for fiction. Her most recent novel, *My Name is Lucy Barton*, debuted earlier this year to critical acclaim and was recently chosen for the long list for the 2016 Man Booker Prize.

Rebecca Vnuk, moderator, is the author of three Reader's Advisory nonfiction titles and is Editor, Collection Management and Library Outreach for Booklist Publications.

This event is co-sponsored by the following: Clarendon Hills Public Library, Downers Grove Public Library, Glen Ellyn Public Library, Hinsdale Public Library, Indian Prairie Public Library, Friends of Indian Prairie Public Library, La Grange Public Library, La Grange Park Public Library, Lisle Library District, Thomas Ford Memorial Library, Westmont Public Library, Woodridge Public Library, and WDCB 90.9FM "Chicagoland's Home for Jazz."

From the community: Lisle Library District Celebrates Banned Books Week 2016

Community Contributor Alexa Hansen

September 23, 2016



Banned Book Week 2016 is September 25 through October 1. This week celebrates our freedom to read whatever it is we choose. This right is cemented into the First Amendment of the U.S. Constitution, which also guarantees freedom of speech and freedom of press. Libraries continue to speak up and protect the right to read, not only to defend our individual right, but to demonstrate respect and tolerance for opposing points of view.

Some of the books that have been challenged, restricted, removed or banned include:

- *The Perks of Being a Wallflower* by Stephen Chbosky
- *This Book is Gay* by James Dawson
- *Looking for Alaska* by John Green
- *The Kite Runner* by Khaled Hosseini
- *Tintin in America* by Herge
- *The Immortal Life of Henrietta Lacks* by Rebecca Skloot
- *The Things They Carried* by Tim O'Brien
- *The Glass Castle: A Memoir* by Jeannette Walls

To protect your right to read it's important to stay informed and up-to-date about what's happening by reading news publications, challenge censorship by working with community groups or writing letters to public officials, and supporting your local schools and libraries.

Visit Lisle Library District's display of banned or challenged books, located behind the Reference Desk, downstairs in Adult Services. For more information on Banned Books Week 2016, stop by the library or visit <http://www.ala.org/bbooks/banned>

From the community: Star Wars Reads Day at Lisle Library District

Community Contributor Alexa Hansen

October 4, 2016



Star Wars Reads Day is back! Join us Saturday, October 8 from 12 to 3 p.m. for all things reading and Star Wars. Join us for trivia, prizes, pod racing, lightsaber crafting, and Star Wars pumpkin carving. Don't miss out on taking a photo with R2D2 and Darth Vader!

Did you know the Lisle Library has over 400 Star Wars related materials for you to check out? Get a BB8 eraser when you check out a Star Wars item! While supplies last.

From the community: Read to Therapy Dogs at Lisle Library District

Community Contributor Alexa Hansen

October 11, 2016

Does your child, grades K-3, need a little extra time reading out loud? Join us for a tail waggin' good time as we practice reading aloud to trained therapy dogs in the library. Sign up for one-15 minute session with our wonderful therapy dogs. You can bring your own book to read or choose one available to you during the program!

There are many benefits to reading aloud to a trained therapy dog:

- The confidence level of struggling readers is boosted and children want to try reading more difficult books
- The process of petting dogs while reading can reduce stress, blood pressure, and anxiety
- Children feel comfortable and calm reading to dogs because dogs do not judge if a word is mispronounced
- Some children feel that reading becomes less difficult when reading to a dog and are more willing to read aloud at school

This program is in collaboration with West Suburban Humane Society and Therapy Dogs International. Learn more about these amazing organizations at <http://www.wshsdg.org/>

and <http://www.tdi-dog.org/>



To sign up for a reading session with the therapy dogs on **Monday, October 17**, visit <http://lislelibrary.evanced.info/signup/Calendar> and choose the time that's best for you and your child.

Chicago Tribune

From the community: Congressman Peter Roskam visits Lisle Library District

Community Contributor Alexa Hansen

October 11, 2016



On October 10, 2016, Congressman Peter Roskam visited the Lisle Library District to discuss Adult Literacy in the community.

From the community: Low Vision Equipment at Lisle Library District Thanks to Donation from Lisle Lions Club

Community Contributor Alexa Hansen

October 14, 2016

The Lisle Library District recently received a donation from the Lisle Lions Club for low vision equipment.

The Library now offers a 27-inch computer monitor as well as two large button keyboard that are black with white letters. These keyboards have provide a bigger and bolder typeface. The two hand-held magnifiers are easy to use and lightweight, patrons can carry these to search the stacks or read the newspaper, while automatically lighting up when held and will turn off when set down.

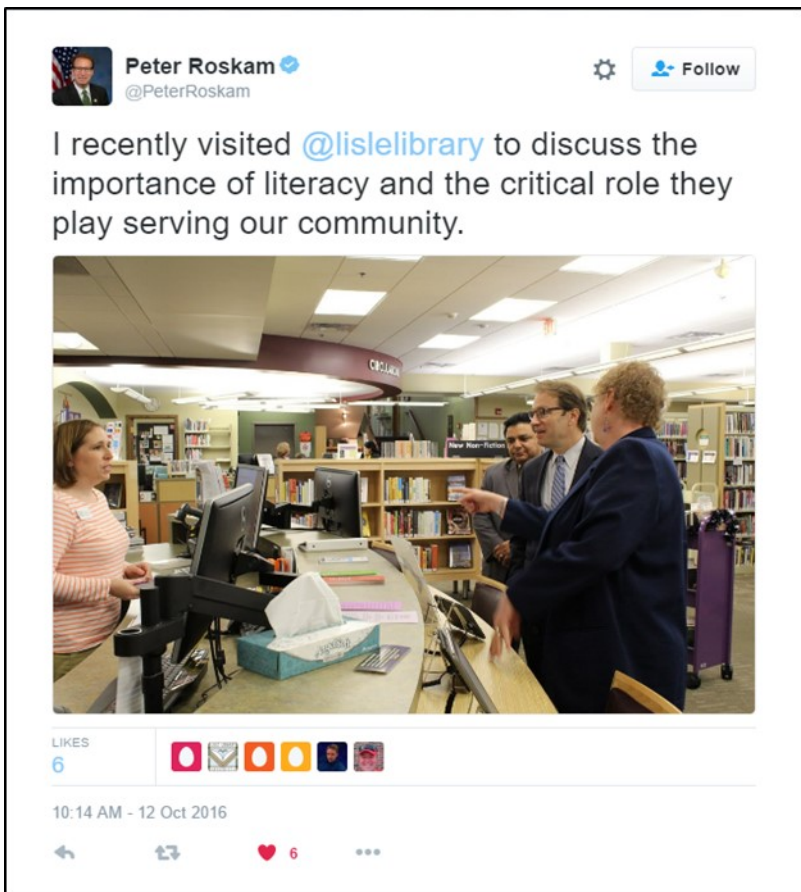


The trackball controller, that exerts less pressure on users' hands, wrists, and arms, is for patrons who are unable to use a standard mouse, such as those with developmental disabilities or carpal tunnel injuries. The task floor lamp places light exactly where it is needed and creates glare free natural daylight, with minimal heat. And finally, the Library purchased new lenses for the big eye magnifying lamp which offers illumination and magnification.

To see pictures of all the new equipment, visit <https://flic.kr/s/aHskJvqRs5>

Lions Clubs International is the world's largest service club organization with more than 1.4 million members in approximately 46,000 clubs in more than 200 countries and geographical areas around the world.

Tweets from Congressman Peter Roskam



Chicago Tribune

From the community: Halloween Storytime at Lisle Library District

Community Contributor Alexa Hansen
November 7, 2016



On Monday, October 31st, LLD hosted a Halloween Storytime with spooky books, silly songs, dancing, and a parade around the library to trick or treating at each of the service desks!

From the community: Lisle Library District to Host International Games Day

Community Contributor Alexa Hansen

November 14, 2016

Do you enjoy tabletop gaming? The Lisle Library District is hosting International Games Day on Saturday, November 19th from 11 a.m. until 3 p.m.

International Games Day is a world-wide celebration of all things tabletop, featuring games like Settlers of Catan and Smashup!, as well as other timeless favorites like Clue and Monopoly.

But that's not all! Attend to win one of five sets of tickets to Lisle's newest gaming destination Pixel Blast Arcade. Refreshments will be served!

International Games Day is an initiative run by volunteers from around the world and supported by the American Library Association's Games and Gaming Round Table, in collaboration with Nordic Game Day and the Australian Library and Information Association, to reconnect communities through their libraries around the educational, recreational, and social value of all types of games.

Gaming of all types at the library encourages young patrons to interact with a diverse group of peers, share their expertise with others (including adults), and develop new strategies for gaming and learning. For more information, visit igd.ala.org.



From the community: Lisle Library District Announces New Library Director

Community Contributor Alexa Hansen

November 22, 2016



The Lisle Library District's Board of Trustees voted unanimously on November 9, 2016 to appoint Tatiana Weinstein as the Library's new Executive Director effective January 1, 2017.

"We're extremely pleased to announce Tatiana Weinstein will become the 6th director of the Lisle Library District," said Lisle Library District's Board of Trustees President Richard Flint. "Tatiana brings a strong vision for the library, excellent management experience, and commitment to the Lisle community."

Tatiana has served in a variety of capacities at LLD since 1998, from Readers' Advisor to Reference Librarian to Assistant Director of Information Services to her current position as Assistant Director/Director of Adult Services. She holds both an MLIS and MA and was the mastermind behind the creation of the Library's Gallery 777, a space in the community where patrons can view art from local Lisle artists.

The current Library Director, Kathy Seelig, will be retiring at the end of the year.

Kathy began her employment with the Lisle Library District as Director of the Reference Department in 1981. She became the Assistant Director and Network Administrator in 1994, and assumed the role of Library Director in December 2014.

"It's with a mixture of gratitude and sadness that we announce the retirement of Kathy Seelig," said Flint. "For 35 years, her stellar contributions at all levels of library operations have enriched the community. We wish her all the best."

We will be celebrating her decades of service to LLD and the community on December 16th in the Library's atrium from 6 to 8 PM. Stop by for refreshments and a chance to wish Kathy well on her retirement!

From the community: Lisle Library District's Winter Read 2016 Program has Begun

Community Contributor Alexa Hansen

December 6, 2016



Want to stay warm during the winter months? Sign up for the Lisle Library District's Winter Read 2016 Program going on from December 1 through January 6.

Visit <http://lislelibrary.readsquared.com/> to enroll today and start logging your reading to earn some lovely prizes!

Adults! When you log two books or

audiobooks*, you earn a Lisle Library District book light and be entered for our grand prize basket! For each additional item logged, you increase your chance of winning!

Teens! When you log two books or audiobooks*, you earn a Lisle Library book and media lounge and will be entered for our grand prize basket! For each additional item logged, you increase your chance of winning!

Kids! Complete winter themed missions to earn badges! If you are able to earn all 15 badges, you'll receive a completion prize! Come in to pick up a bookmark to help you track your mission progress or track your progress online using the digital platform.

*Please note, only books or audiobooks read or listened to between December 1 and January 6 will count. Magazines

From the community: Lisle Library District Hosts Family Events for English Language Learners (ELL) Students

Community Contributor Alexa Hansen

December 20, 2016



Lisle Library District recently hosted two family events for English Language Learning (ELL) students in Lisle School District #202 Junior and Senior High Schools, taught by Ms. Joanna Ng, ELL teacher.

Students and their parents were introduced to Lisle Library's Literacy/English Language Development (ELD) resources and other family services offered by the Library.

Learn more about Lisle Library District's Literacy resources and classes at <http://www.lislelibrary.org/services/literacyenglish-language-development-eld>

PUBLIC LIBRARIES


THE OFFICIAL MAGAZINE OF THE PUBLIC LIBRARY ASSOCIATION

VOLUME 55, NO. 4

JULY/AUGUST 2016

WWW.PUBLICLIBRARIESONLINE.ORG

ISSN 0163-5506



**Prescriptions for Joy:
Librarians, Collections, and
Bibliotherapy in Pediatric
Hospital Settings**

**The Child-Free Factor and
Other Fringe Benefits:
Moving Beyond Natural
Targets**

**Quintuplets and a Barber's
Memory: It's All Local
History to Me!**

ADULT PERIODICAL
Public Libraries [periodical]
v. 55 # 4 (July/Aug. 2016)

The Child-Free Factor and Other Fringe Benefits

Moving Beyond Natural Targets

By Tatiana Weinstein

It would be shocking to propose removing a significant percentage of the expected entries from the library newsletter and decisively replacing that content with news and resources targeted at single adults. When is the last time you visited a public library's website or social media page where most of the photo stream simply featured thirty-somethings? Fifty-somethings?

The public library should be a place of learning, exploration, and enjoyment for children. The library should also offer parents essential resources and tools to successfully raise children. We do provide these services, and we do it very well—and absolutely should continue to do so. But we too often exclusively brand ourselves as a resource for families. In addition to visual promotions, much of our narrative is focused on families with children, from newsletter articles to local paper write-ups to board meeting talking points. Who could blame us? Those images tug at the heartstrings, and stories of kids creating a craft at a program will appeal to any mom or dad. But, in promoting this impression more than others, public libraries are, to our detriment, alienating a rising population of potential users. It's time to modify our marketing perspectives.

When we advertise ourselves chiefly as a place for families with children, we inadvertently set up a model where the library not only is less appealing to child-free people, but doesn't even register as a destination space for them. Why would one decide to venture to a place where they haven't been invited?

In other words, we are routinely preaching to the choir and we need to do a little more marketing outside the orthodox box. The American Library Association states in one of its "Core Values of Librarianship" that "[t]he publicly supported library provides free and equal access to information for all people of the community the library serves."¹ This basic principle of providing for *all* inherently includes advocacy of library services to the public. We have the democratic responsibility to spread our message to *all*. This includes nontraditional users.

But the nontraditional is becoming more and more common in our society as a whole. In her 2013 *Time* cover article "The Childfree Life," Lauren Sandler cites a 2010 Pew Research report showing that being child-free has risen across all racial and ethnic groups, adding up to about one in five American women who are child-free today compared to one in ten in the 1970s. Before the recession hit in 2008, the proportion of women ages forty to forty-four who had never given birth grew by 80 percent since 1976, from 10 to 18 percent.²

Sandler further discusses the reasons couples have for not becoming parents, the increasing impetus to not reproduce, and the stigma attached to those who choose not to have children. Laura Carroll, author of *The Baby Matrix* (2012) and *Families of Two* (2000), is another writer who has devoted her career to exploring, documenting, and supporting the child-free life and revealing the political and economic impact of "pro-natalist" leanings. Her website (www.lauracarroll.com) is one example of hundreds of blogs and websites dedicated to child-free living. Karen Malone Wright, founder and executive editor of *The NotMom* (www.thenotmom.com), coordinated the first NotMom Summit in 2015 in Ohio.

Adults without children are a growing demographic, and we have a duty to advocate for and unabashedly serve this popula-

About the Author

TATIANA WEINSTEIN is Assistant Director/Director of Adult Services at Lisle (IL) Library District.

Contact Tatiana at tatiana@lislelibrary.org.

Tatiana is currently reading *Work Rules! Insights from Inside Google That Will Transform How You Live and Lead* by Laszlo Bock and *A Unicorn Named Sparkle* by Amy Young.

tion. We belong to a largely kid-centric society, where suggesting that children should not have the entire focus is, to many, fundamentally distasteful. It's a touchy subject for any conversation, let alone one about the public library. But we need to have this dialogue in regard to expanding the way we publicize ourselves. It's about *reach*. It suggests a promotional paradigm shift. And again, this proposed shift neither discounts or disparages how we currently serve youth, nor is it about subtracting youth services from our current programming. It's about looking at and branding ourselves a little differently, with a more balanced eye towards nuanced societal changes.

The public library user experience is changing along with society. More patrons are using the library as a space for collaboration, higher education, artistic creation, and technological exploration. This new library model makes child-free people prime candidates for library cards. Inviting this population across our thresholds is not only smart, it is also our duty.

Underutilized resources and services are common challenges for many public libraries. We've all experienced the "Oh my goodness, I never knew you guys had this, you've just saved my life!" reaction from a patron. But is that because we've been systematically marketing to a specific demographic? I believe if we switch up our scheme just a bit, we'll see a larger return in terms of awareness and new users. The increasing awareness of child-free living, as shown in part by its appearance on the cover of *Time*, should at least open our eyes to this growing populace and encourage us to explore going beyond our natural marketing tendencies. It's about moving beyond our promotional norms, not our operational norms.

Some libraries are supplementing the natural targets of families with children by programming for singles in their community. Oak Park (IL) Public Library has had successful speed dating programs at their facility. Assistant Manager of Adult/Teen Services Alex Skinner has hosted two speed-dating events in the past year: one program targeting twenty- to thirty-somethings and the other targeting the

forty-plus crowd. When asked why it's important for libraries to appeal to single people, Skinner said, "We want them to know that public libraries are for them too. Yes, we are for families and for academic interests, but we are also a place to socialize, meet people and have fun." Skinner also mentioned wanting to implement a "Newlywed [Game]-type game . . . trying to reach the same goal; targeting adults without kids."³ A participating single person or newlywed couple may already have children, of course, but the *intention* of these types of programs is to attract the child-free to walk through the door, learn about the library, and see that it's a welcoming place for them, too.

If speed-dating sounds a little too out-of-the-box for your library, you might try initiating a series of craft or DIY programs targeted specifically at adults. When most people hear or read the word *craft* in relation to a public library, they typically think glue sticks, glitter, and (yes) children.

"Crafting is both the predecessor, the companion, and the successor to makerspaces," said Xavier Duran, the Lisle (IL) Library District's (LLD) adult programming coordinator. "When one thinks of makerspaces, often times [one pictures] an image of a space dominated by 3D printers, rows of high performing, Adobe Creative Suite computers, and other machinery that inspire both awe and a bit of fear. However, at root, a makerspace is *any* inviting space for DIY that inspires collaboration among peers of any social status. What's more . . . adult craft/DIY programs allow adults to *rediscover* the library, a place they have commonly associated with families with children and rarely with single adults. It goes without saying that these DIY spaces and libraries make a lovely partnership, libraries being the democratic *modus operandi* for individuals to curate their curiosities, and then immediately apply their findings by themselves or, best, in a group that shares that same curiosity."⁴


LLD seeks to expand what patrons think of when they see a craft program on the event calendar. The library has introduced programs directed at adult crafters and for those adults who would like to ex-



Adult craft programs: terrarium, book, and coaster making classes at Lisle (IL) Library District. (Photos by Xavier Duran of LLD)

plore DIY for the first time, from creating terrariums to artful journal making. This library also hosts six (yes, six!) monthly adult discussion groups—five book groups and one film club. These groups are all staff-driven and allow adults an opportunity to meet and engage with other film and book lovers. A healthy and steady adult programming lineup is key in providing an attractive place for adults in the community.

Notable Non-Parents

- Margaret Wise Brown, author (*The Runaway Bunny*, *Good-night Moon*, and more)
- Julia Child, chef
- Theodor Seuss Geisel, aka Dr. Seuss, author
- Terry Gross, National Public Radio host
- Lorraine Hansberry, author (*Raisin in the Sun* and more)
- Katharine Hepburn, actress
- Zora Neale Hurston, author (*Their Eyes Were Watching God* and more)
- Harper Lee, author (*To Kill a Mockingbird*)
- Georgia O'Keefe, artist
- Rosa Parks, civil rights icon
- Beatrix Potter, author (*The Tale of Peter Rabbit*, *The Tale of Jemima Puddle-Duck*, and more)
- Condoleezza Rice, former U.S. Secretary of State and educator
- Diane Sawyer, journalist
- Maurice Sendak, author (*Where the Wild Things Are* and more)
- Gloria Steinem, activist and author
- Betty White, actress
- Oprah Winfrey, media phenomenon 

Of course, trying to expand reach is not just about programming. The library also must commit to branding itself as a welcoming place for all audiences. Exploring what your library already does and says and then digging a bit deeper and seeing the deficits is, indeed, a thoughtful task. Are all of your Facebook posts (or newsletters, brochures, webpage features, etc.) geared towards a specific familial demographic? When your library has the opportunity to be featured in your local newspaper, does the library target nontraditional audiences? Bringing in new users requires a revamp of the library's

"invitation," including verbal, physical, and digital or electronic solicitations. Remember, child-free numbers have risen. These people are out there—is your library providing an invite?

We cannot forget just how important words are, especially when we speak as field professionals. At a recent library conference, I looked for presentations that might address child-free users. I came up empty. Of course I could not attend all the programs, but even in the "Elusive Non-User" presentation I hoped to hear something about targeting users who are not parents. Alas, what I *did* hear was, "Parents are the important target." It was said as if there was no other target worth mentioning. Now, it's agreed that parents *are* an important demographic, but they are not the *only* significant target, especially when discussing "elusive non-users." I think it's something we forget because many of us have families with children and it has been our tradition to market to the familiar. In another presentation regarding space in libraries, I heard the routine phrase, "Parents and kids are our bread and butter." Now, there is more than one variety of bread out there. We shouldn't bank on one demographic to nourish. Public libraries have religiously relied on the bread-and-butter model, but with changing domestic standards, such as increasing child-free family numbers, we should consider devoting ourselves to other belief systems. It's the only way we can compete in a world where the unacquainted question the validity of a public library in a tech-rich and precarious economy.


We must remember to speak beyond the conventional when we talk with our public, at conferences, to our boards, and among ourselves. Narratives matter when you are trying to go beyond the conventional. Looking beyond mainstream domestic standards is a smart way to remain relevant among those who may view public libraries as irrelevant in this day and age. We know we aren't irrelevant. We have something for everyone, but how will the general public learn this if we cannot step outside of a predictable promotional paradigm? This moving-beyond-convention scheme

applies when libraries want to appeal to any new or growing community group, be they seniors, an ethnic group, the LGBTQ community, or ESL/English Language Development individuals.

The child-free among us are a growing group that should not be overlooked when we write about, program, or speak about public library services. One in five of us does not have children—that's 20 percent of the population. What does 20 percent look like and mean?

- 18.5 percent: African-American population in Springfield, IL (2010 US Census)⁵
- 19 percent: American households that owe student debt (2010 Pew Research Center)⁶
- 20 percent: Americans who do not identify with any religion (2012 Pew Research Center)⁷
- 20 percent: Americans who lack access to a smartphone or a broadband Internet connection (2015 Pew Research Center)⁸

From a public library perspective, ignoring one-fifth of your population is just plain illogical. Twenty percent is a significant piece of that potential-patron pie. Continually branding ourselves to one familial demographic limits our reach and segregates our diverse and numerous offerings. As an institution, the public library is ever-evolving with technology and innovation. It's about time that our dated marketing efforts catch up with our high-tech endeavors.

I have focused on child-free individuals for this specific piece, but all that I have suggested is relevant for any peripheral population within your particular locality. We must advertise differently. This isn't just about outreach it's about overall reach, invitation, and inclusion. Research your unique community and discover another slice of that pie. Actively invite the "unconventional" to your library using innovative marketing and programming, and you might just open some new eyes to a valuable library resource, service or destination place—in addition to increasing your patronage. This is our democratic obligation. Let's extend our reach. We have more potential. 

References

1. American Library Association, ALA Council, "Core Values of Librarianship," June 29, 2004, accessed Aug. 2, 2016, www.ala.org/advocacy/intfreedom/statementspols/corevalues.
2. Lauren Sandler, "The Childfree Life: When Having It All Means Not Having Children," *Time* (Aug. 12, 2013), 40.
3. Alex Skinner, telephone interview with author, Mar. 2016.
4. Xavier Duran, in-person interview with author, Dec. 2015.
5. United States Census Bureau, "Quick Facts: Springfield City, Illinois," accessed July 6, 2016, www.census.gov/quickfacts/table/PST045215/1772000.
6. Richard Fry, "A Record One-in-Five Households Now Owe Student Loan Debt," Pew Research Center: Social and Demographic Trends, Sept. 26, 2012, accessed July 6, 2016, www.pewsocialtrends.org/2012/09/26/a-record-one-in-five-households-now-owe-student-loan-debt.
7. Cary Funk and Greg Smith, "'Nones' on the Rise: One-in-Five Adults Have No Religious Affiliation," Pew Research Center: The Pew Forum on Religion & Public Life, Oct. 9, 2012, accessed July 6, 2016, www.pewforum.org/2012/10/09/nones-on-the-rise.
8. John B. Horrigan and Maeve Duggan, "Home Broadband 2015," Pew Research Center: Internet, Science & Technology, Dec. 21, 2015, accessed July 6, 2016, www.pewinternet.org/2015/12/21/home-broadband-2015.

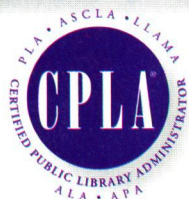


FOLLOW PL ON TWITTER @PUBLIBONLINE

Budget and Finance
Management of Technology
Organization and Personnel
Administration
Planning and Management
of Buildings
Current Issues
Marketing
Fundraising/Grantsmanship
Politics and Networking
Serving Diverse Populations

ALA APA
the organization for the
advancement of library employees

Now is the **TIME** to invest in **YOURSELF!**



cpla@ala.org
800-545-2433, x2424

Certified Public Library Administrator® Program

If you have...

- An MSLS degree (ALA-accredited, or accredited by the national body of another country)
- At least three years of supervisory experience

...would you like to say the following at your next staff meeting?

- *Our library received a grant based on my project for a CPLA course.*
- *I conducted a staff study and created individual development plans for each of my direct reports.*
- *I have discovered that there are communities that our library is not reaching.*
- *The technology plan I wrote for a CPLA course has been adopted for our library.*
- *These courses are helping me do my job better, which is important when we are doing more with less.*

Apply at <http://ala-apa.org/certification>.
Applications are reviewed quarterly.

Compared with the costs of similar professional development and additional graduate degrees, CPLA is affordable, accessible and designed specifically for librarians!



MISTWOOD Grand Opening CELEBRATION

You're Invited!

[COMPLIMENTARY ADMISSION]

THURSDAY, APRIL 21ST - 6-8 PM

*Cooking Demonstration & Cook-Off

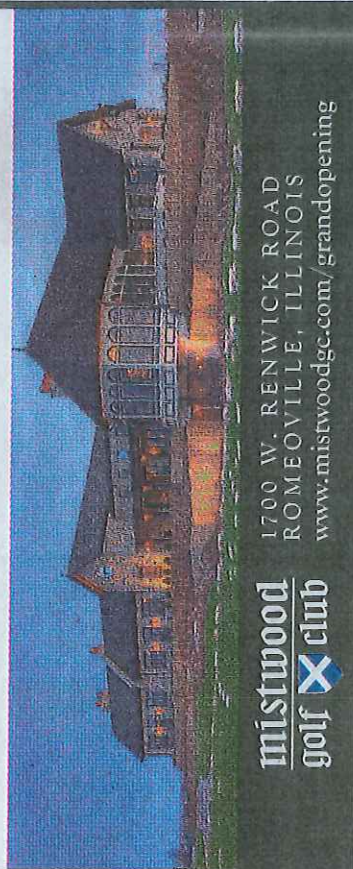
*Emceed by Celebrity T.V. Food Personality Ted Brunson

FRIDAY, APRIL 22ND - 6-8 PM

*Scotch Tour Tasting

SATURDAY, APRIL 23RD - 4-9 PM

*Craft Beer Festival & Family Fireworks Night



mistwood
golf club

1700 W. RENWICK ROAD
ROMEDEVILLE, ILLINOIS
www.mistwoodgc.com/grandopening



Author Hank Phillippi Ryan will discuss her newest novel, "What You See," with members of Lisle Library District's Murder Among Friends mystery group April 14.

Photo provided
by Chitose Suzuki

Mystery author to visit Lisle Library

SUBURBAN LIFE MEDIA

LISLE - Celebrated author and investigative reporter Hank Phillippi Ryan will visit the Lisle Library District's Murder Among Friends mystery group's discussion of her newest novel, "What You See."

Book discussion will begin at 7 p.m. April 14, with the author joining the discussion at 7:30 p.m. There is no registration required and all are welcome to attend.

Ryan has received myriad awards for her crime fiction, including five Agathas, two Anthony's, the Daphne, two Macavity honors, and the prestigious Mary Higgins Clark award. To

If you go

- **WHAT:** Lisle Library District's Murder Among Friends mystery group discussion featuring author Hank Phillippi Ryan
- **WHEN:** 7 p.m. April 14
- **WHERE:** Lisle Library District meeting room B
- **INFO:** www.lislelibrary.org or

view more of her work and achievements, go to hankphillippi.com. For more information, visit www.lislelibrary.org.



MEAT • DELI • PRODUCE

Meat Specials

Fresh Chicken Drumstick	lb.	59¢
Thin Cut Chicken Cutlets	lb.	\$2.49
Fresh Lean Ground Chuck 3 lbs. or more	lb.	\$2.89
Fresh All Natural Baby Back Ribs	lb.	\$3.49

Sale Dates: April 13th thru April 19th, 2016
2230 Maple Ave, Downers Grove Corner of Maple & Belmont

630-960-9780

Visit our website at
www.angelosfoods.com
We accept credit cards & the Illinois Link Card

Better
Prices than
Big Box
Stores

Produce Specials

Cello Iceberg Lettuce	ea.	59¢
Broccoli Crowns	lb.	69¢
Snowwhite Cauliflower	lb.	75¢
X-Large		

Gracery Specials

Fillipo Basic Olive Oil	16.9 oz. ea.	\$4.49
Rinoldi Pasta Sauce	24 oz. ea.	\$1.49
Hills Bros. Coffee	24 or 30.5 oz. ea.	\$7.99
French's Yellow Mustard	20 oz. ea.	\$1.89
AI Steak Sauce	10 oz. ea.	\$3.49
Pepsi 2 Liter Bottles	ea.	99¢
Centrella White Bread	16 oz. ea.	99¢
Home Kitchen Bannan		\$7.99

naperville

APRIL 2016

2016 WEDDING TRENDS

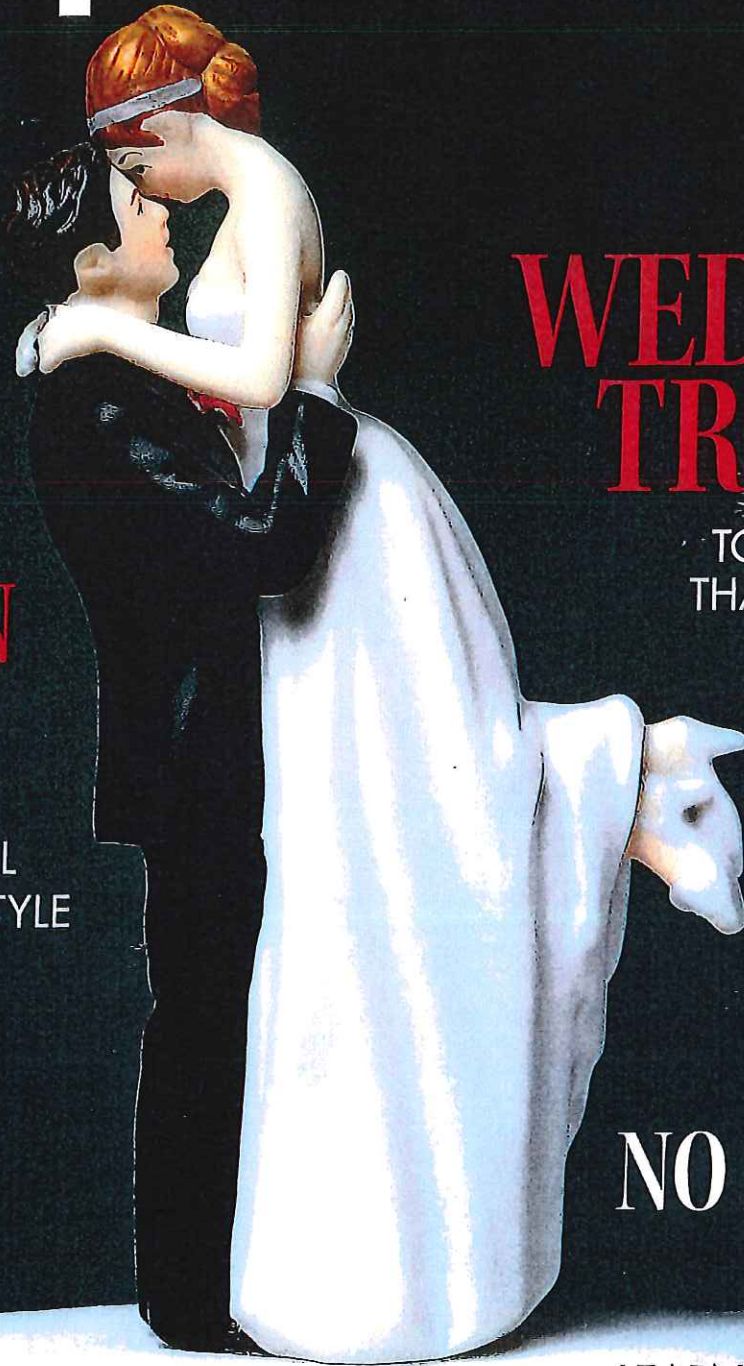
TOP TRENDS FOR
THAT SPECIAL DAY

MODERN FLAIR

SOPHISTICATED
LOOKS THAT WILL
ELEVATE YOUR STYLE

NO DRONE ZONE

LEARNING TO (FIND
A PLACE TO) FLY



BUSINESS BRIEFS

Corporate Strategies & Solutions, Inc., (CS&S), a Sandler Training Center in Naperville, has hired **Rich Austin** as a senior business development associate. Austin has a record of successful business development from concept through sustained long-term growth and change management. Prior to joining CS&S, he worked for Sandler Training in Ann Arbor, Michigan. As an award-winning Sandler Trainer, Austin's four areas of expertise are analyzing business behaviors around prospecting, qualifying and closing; customizing the Sandler selling system to help sales teams in front of the right prospects; recapturing and widening the business scope with current accounts; and coaching and mentoring sales managers and executives to maximize sales team performance. Austin earned his bachelor's degree in Sports Management and Communication from the University of Michigan.



The DuPage Foundation has hired **William C. Pearch** as its new marketing manager. Pearch is a seasoned professional who brings more than 20 years of marketing and communication experience from both the for- and not-for-profit worlds to The DuPage Foundation. In his new role, Pearch will be responsible for focusing the Foundation's messaging to its various constituents and helping foster greater awareness for its mission and services throughout the community. For the past eight years, Pearch focused his talents serving greater Chicagoland engineering firms. Most recently he worked as marketing and business development coordinator for Chicago-based TERRA Engineering, Ltd. where he was responsible for branding and cross-promotion of the firm's engineering services lines. Prior to that, Pearch spent more than a decade leading marketing, communications and special event efforts in DuPage County for the Elmhurst and Downers Grove Park Districts. He is a graduate of Elmhurst College where he earned a Bachelor of Arts degree in Interdepartmental Communications and



RICH AUSTIN PHOTO COURTESY CS&S; WILLIAM C. PEARCH PHOTO COURTESY THE DUPAGE FOUNDATION

a Master of Arts degree in Integrated Marketing Communications from Roosevelt University.

AWARDS

My Chef Catering has received the wedding industry's two most prestigious online awards for 2016. For the 6th year, **The Knot** has recognized My Chef with its **2016 Best of Weddings Award**. The Knot has also placed My Chef Catering in their Hall of Fame for consistent excellence in the wedding industry. **The Wedding Wire** also recognized My Chef Catering with its **2016 Couple's Choice Award**. This is the 7th year My Chef has won this prestigious award. These awards are given to companies that receive the highest customer satisfaction ratings from brides, grooms, and their families in such areas as professionalism, quality of service, responsiveness, value and flexibility. My Chef Catering has consistently ranked in the top 5 percent in the U.S. for wedding excellence by both of these online wedding industry leaders.

Downers Grove-based **Perma Seal Basement Systems** executive vice president



Laura Ann Spencer has been named a 2016 Woman of Influence award winner by Chicago Business Journal. The award focuses on women business leaders who foster environments that create more successful women in the future. The winners were selected by a group of advisers and editors from the American City Business Journal, a parent company of Chicago Business Journal. For more than 10 years, Spencer has helped Perma-Seal develop a strong set of core values and foster a thriving company culture.

Lisle Library District Director **Kathy Seelig** and Literacy Outreach Librarian **Jean Demas** accepted the Naperville School District 203 Exemplary Business Partnership Award in February. The award praises the Lisle Library District's promotion of family literacy throughout the community. The Lisle Library District partners with the Ann Reid Early Childhood Center and Literacy DuPage to provide English as a second language resources and classes to help parents teach their children.

LAURA ANN SPENCER PHOTO COURTESY PERMA SEAL BASEMENT SYSTEMS

CREATING THE
EXPECTED

FINISHED™
BASEMENT
COMPANY

Naperville, IL 60540
dBasement.com

DAY MARCH 12TH
11:00 am - 4:00 pm

S OF IDEAS FREE ADMISSION!

FOR MORE INFORMATION
CALL (630) 401-8503
OR VISIT
BASEMENTEVENT.COM



aphy.com | 630.585.7959

girls

Join u
friend
your c
guide
painti
a greo

Perfect

Pinot's P
175 W. J
Napervi
331-457

Pinot's P

R C